

# Poly Roof Kit

P/N 2885077

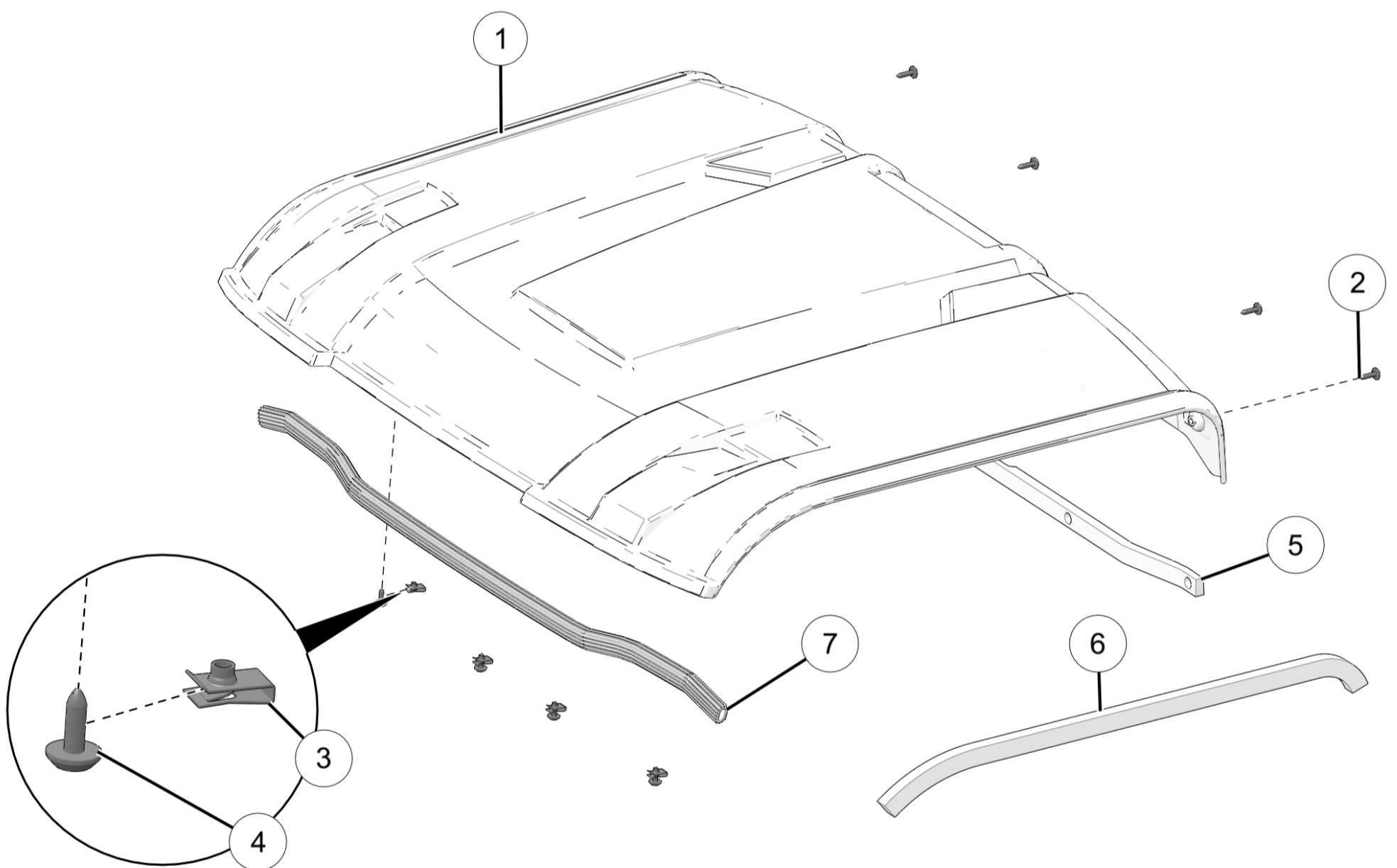
## Before You Begin

Read these instructions and check to be sure all parts and tools are accounted for. Please retain these installation instructions for future reference and parts ordering information.

## Application

Verify accessory fitment at [www.polaris.com](http://www.polaris.com).

## Kit Contents



Ref	Qty	Part Description	P/N Available Separately	Available Service Kit
1	1	Panel-Roof	n/a	n/a
2	4	Screw-Torx® Truss Head, (M6 x 1.0 x 25 mm)	n/a	2205517
3	4	Clip-U-Nut	n/a	2205517
4	4	Screw-Torx® Truss Head, (M6 x 1.0 x 20 mm)	n/a	2205517
5	1	Seal-Roof, Rear	n/a	2205519
6	2	Seal-Roof, Side	n/a	2205519
7	1	Seal-Roof, Front	n/a	2205519

## Tools Required

- Socket Set, Torx® Bit
- Torque Wrench

## Important

Your Poly Roof Kit is exclusively designed for your vehicle. Please read the installation instructions thoroughly before beginning. Installation is easier if the vehicle is clean and free of debris. For your safety, and to ensure a satisfactory installation, perform all installation steps correctly in the sequence shown.

## Installation Instructions

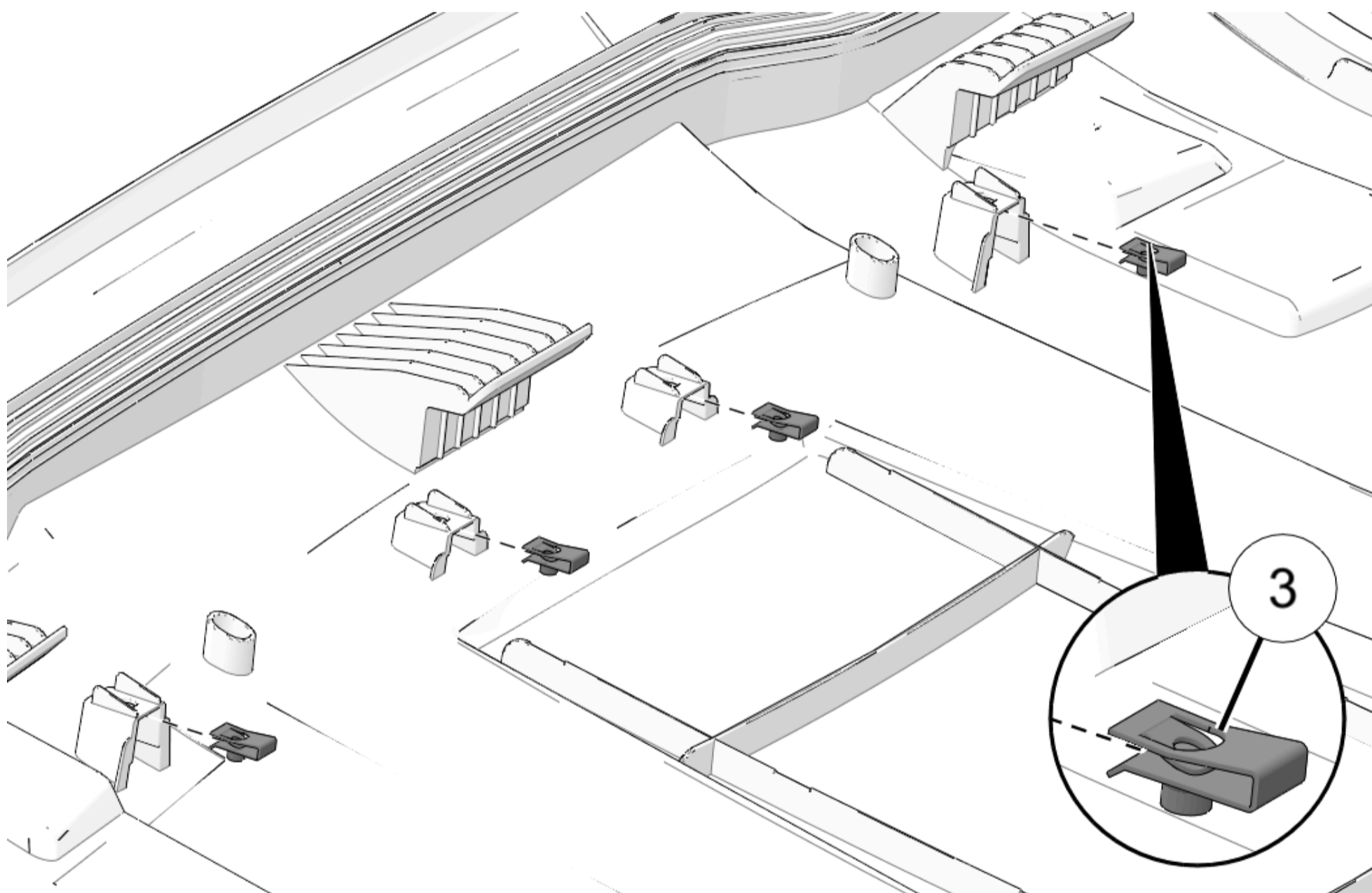
### Vehicle Preparation

#### General

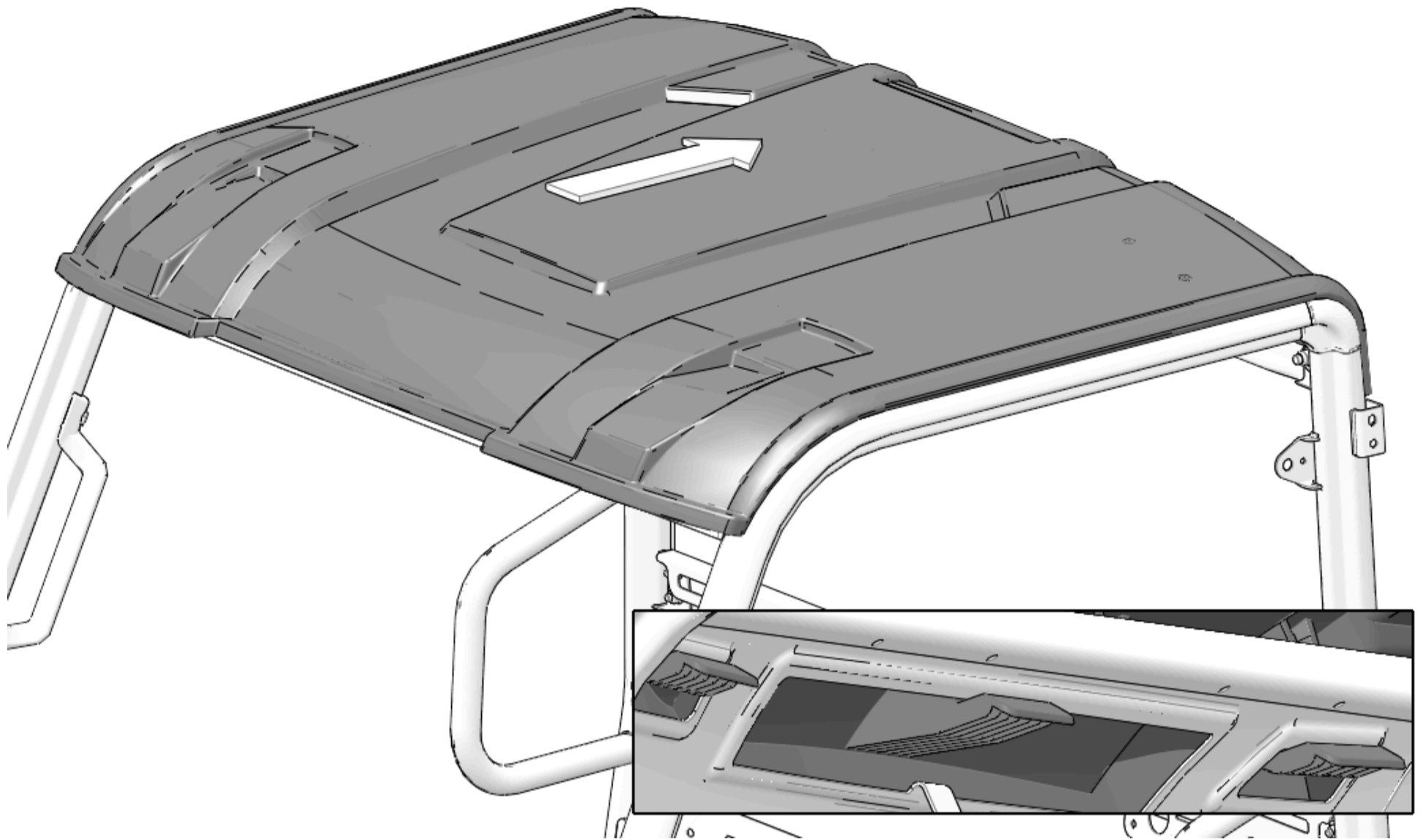
1. Park vehicle on a flat surface.
2. Shift vehicle into PARK.
3. Turn key to OFF position and remove key.

### Accessory Installation

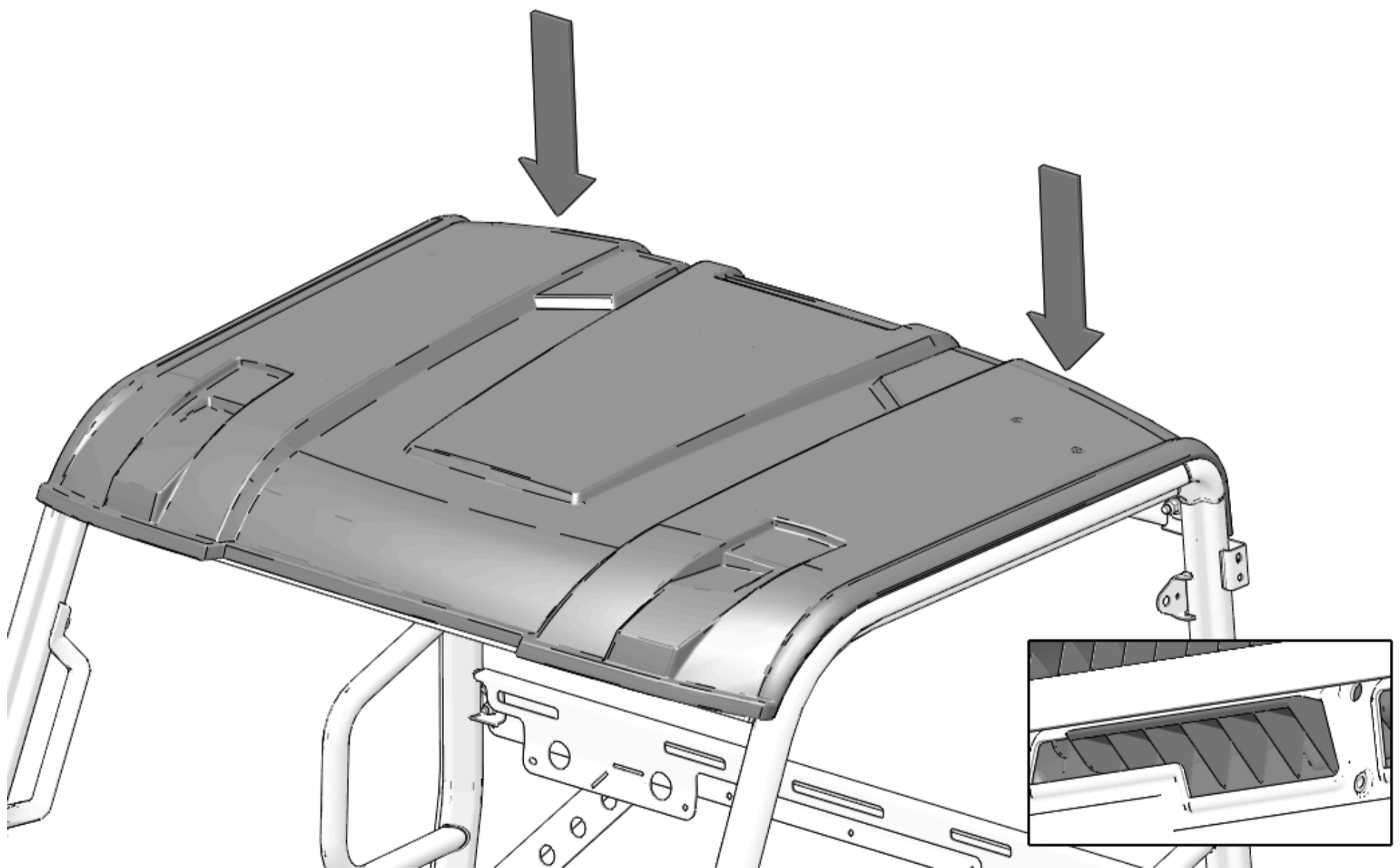
1. Install roof seals per seal kit instructions.
2. Install four U-nuts (3) on underside of roof panel.



3. Put roof panel on top of roll cage with retaining hooks on windshield mounting plate, as shown.

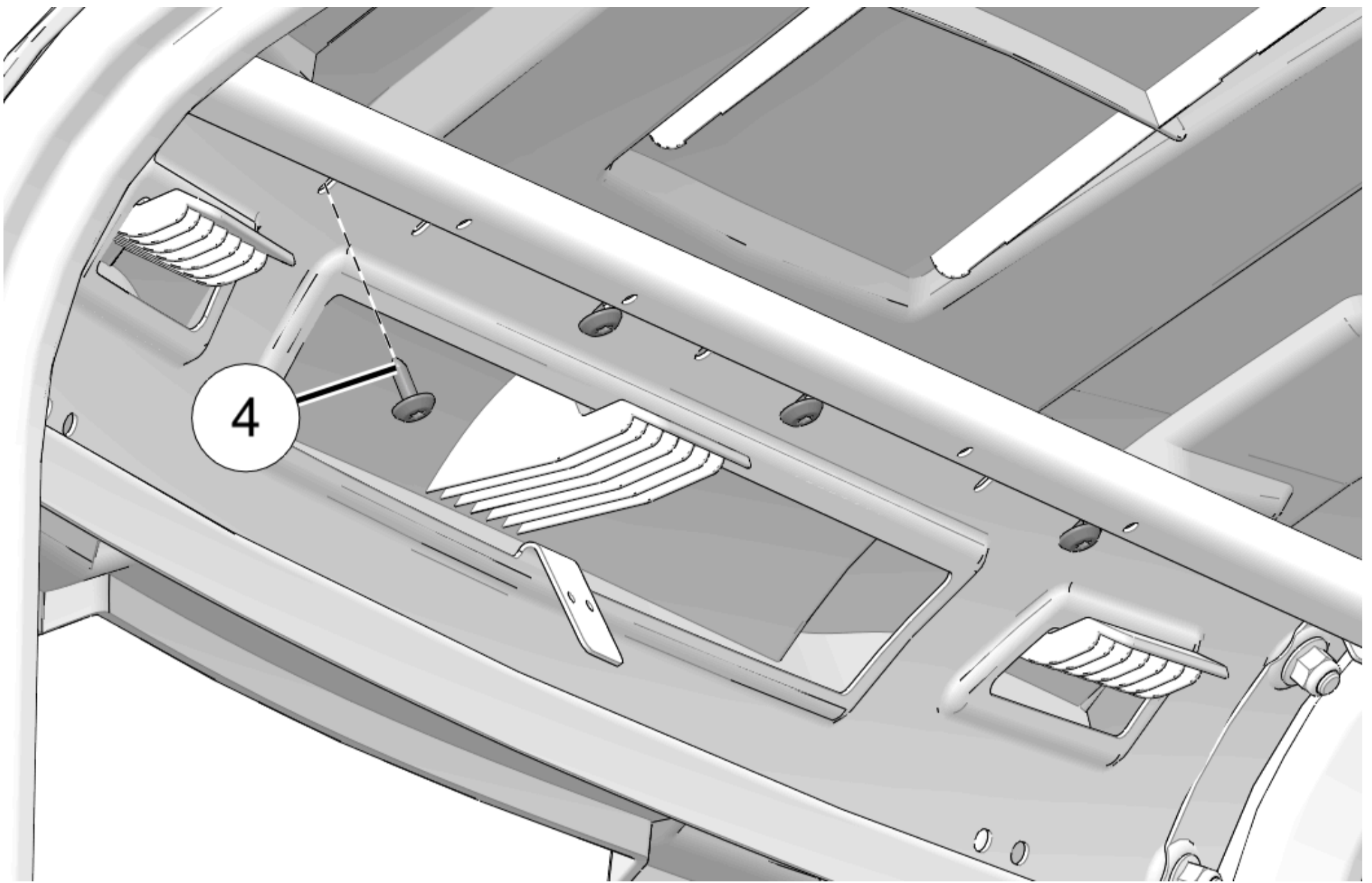


4. Pull rear of roof panel downwards until two clips snap into place.



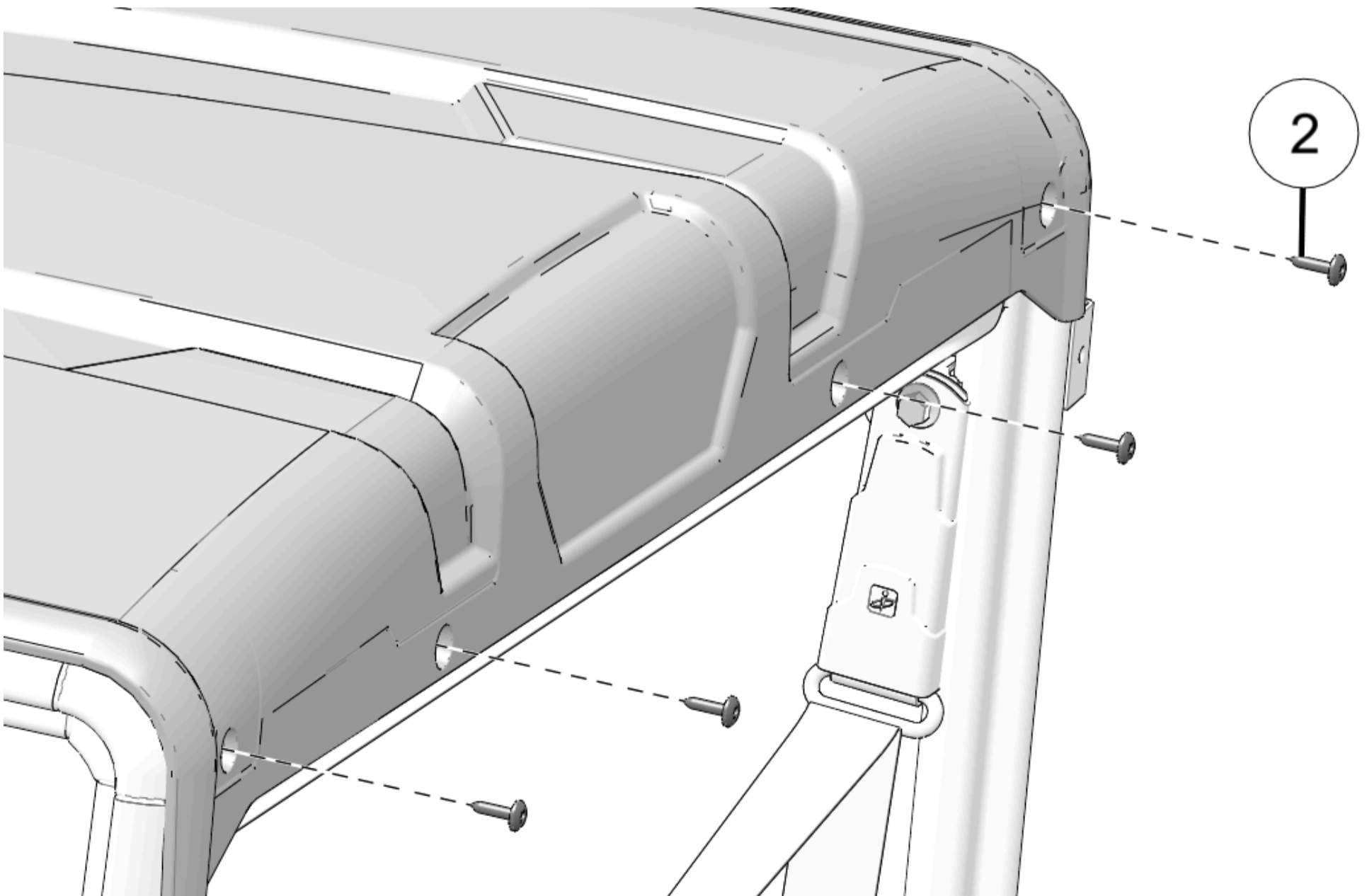
5. Install front of roof with four screws (4).

Do not torque screws at this time.



6. Install rear of roof with four screws (4).

Do not torque screws at this time.



7. Torque four front screws (2) to specification.

TORQUE

41 in-lbs (4.7 N·m)

8. Torque four rear screws ② to specification.

### TORQUE

Rear Roof Screws ②:

41 in-lbs (4.7 N·m)

## Instruction Feedback Form

A feedback form has been created for the installer to provide any comments, questions or concerns about the installation instructions. The form is viewable on mobile devices by scanning the QR code or by clicking [HERE](#) if viewing on a PC.

