

Contents

Select Language ▼

Powered by Google Translate

Glass Tipout Windshield Kit

P/N 2885079

Missing or Damaged Parts

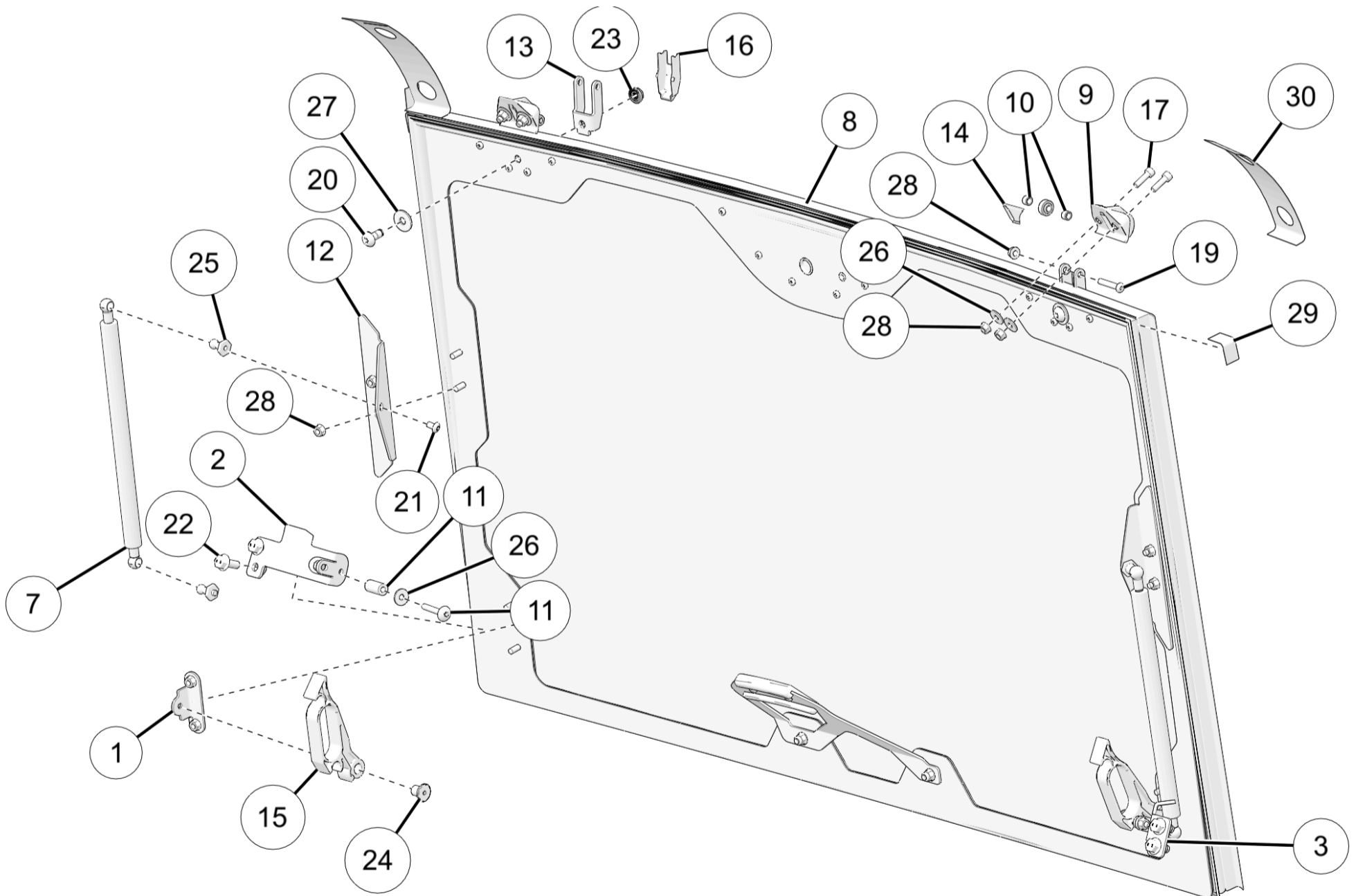
Before beginning assembly, inspect the kit and its component(s) to be sure all parts and tools are accounted for and not damaged. If missing parts or parts are damaged, please contact your Selling Dealer for assistance.

If your accessory was purchased online, please contact POLARIS® customer service at **1-800-POLARIS** (US & Canada only).

Application

Verify accessory fitment at www.polaris.com.

Kit Contents



Ref	Qty	Part Description	P/N Available Separately	Available Service Kit
1	2	Weld, Bracket	n/a	n/a
2	1	Mount Bracket, Left	n/a	n/a
3	1	Mount Bracket, Right	n/a	n/a
4	0	Hardware, Shocks	n/a	2209352
5	0	Hardware, Handles	n/a	2209352

Ref	Qty	Part Description	P/N Available Separately	Available Service Kit
6	0	Hardware, Hinges	n/a	2209352
7	2	Shock, Gas, Tipout	2638391	n/a
8	1	Tipout Windshield Assembly	2638392	n/a
9	2	Assembly, Chassis Hinge, Tipout	n/a	n/a
10	4	Spacer, Hinge, Clamp	5144558	n/a
11	2	Bushing (12.70 x 25.40 mm)	5144559	n/a
12	2	Bracket, Frame, Windshield, Tipout	5271535	n/a
13	2	Bracket, Hinge, Tipout	5271539	n/a
14	2	Hinge, Clamp, Filler	5459066	n/a
15	2	Handle Lock	5459068	n/a
16	2	Cover, Hinge, Tipout	5459091	n/a
17	4	Screw, Hex (M6 x 1.0 x 20 mm)	n/a	n/a
18	2	Screw, (M6 x 1 x 40 mm)	n/a	n/a
19	2	Screw, Hex, (M6 x 1.0 x 35 mm)	n/a	n/a
20	2	Screw, Torx®, (M8 x 1.25 x 20 mm)	n/a	n/a
21	2	Screw, Torx®, (M6 x 1 x 10 mm)	7521091	n/a
22	4	Screw, Hex, Flange, (M8 x 1.25 x 20 mm)	7521332-20	n/a
23	2	Nut, Hex, Flange, (M8 x 1.25 mm)	n/a	n/a
24	2	Spacer, (11 x 12 mm)	n/a	n/a
25	4	Ball Stud Nut, (M6 x 1.0 mm)	n/a	n/a
26	6	Washer, (4 x 11 x 1 mm)	n/a	n/a
27	2	Washer, Flat, (M8 x 24 x 2 mm)	n/a	n/a
28	16	Nut, Hex, Flange, (M6 x 1.0 mm)	n/a	n/a
29	2	Tape, Windshield Plate, Corner	n/a	n/a
30	2	Tape, Windshield Plate	n/a	n/a

Tools Required

- Safety Glasses
- Socket Set, Hex Bit, Metric
- Socket Set, Metric
- Socket Set, Torx® Bit
- Torque Wrench
- Wrench Set, Metric

Consumables Required

- Grease, Polaris® All Season (or equivalent)

Important

Your Glass Tipout Windshield Kit is exclusively designed for your vehicle. Please read the installation instructions thoroughly before beginning. Installation is easier if the vehicle is clean and free of debris. For your safety, and to ensure a satisfactory installation, perform all installation steps correctly in the sequence shown.

Installation Instructions

Vehicle Preparation

General

1. Park vehicle on a flat surface.
2. Shift vehicle into PARK.
3. Turn key to OFF position and remove key.

Accessory Installation

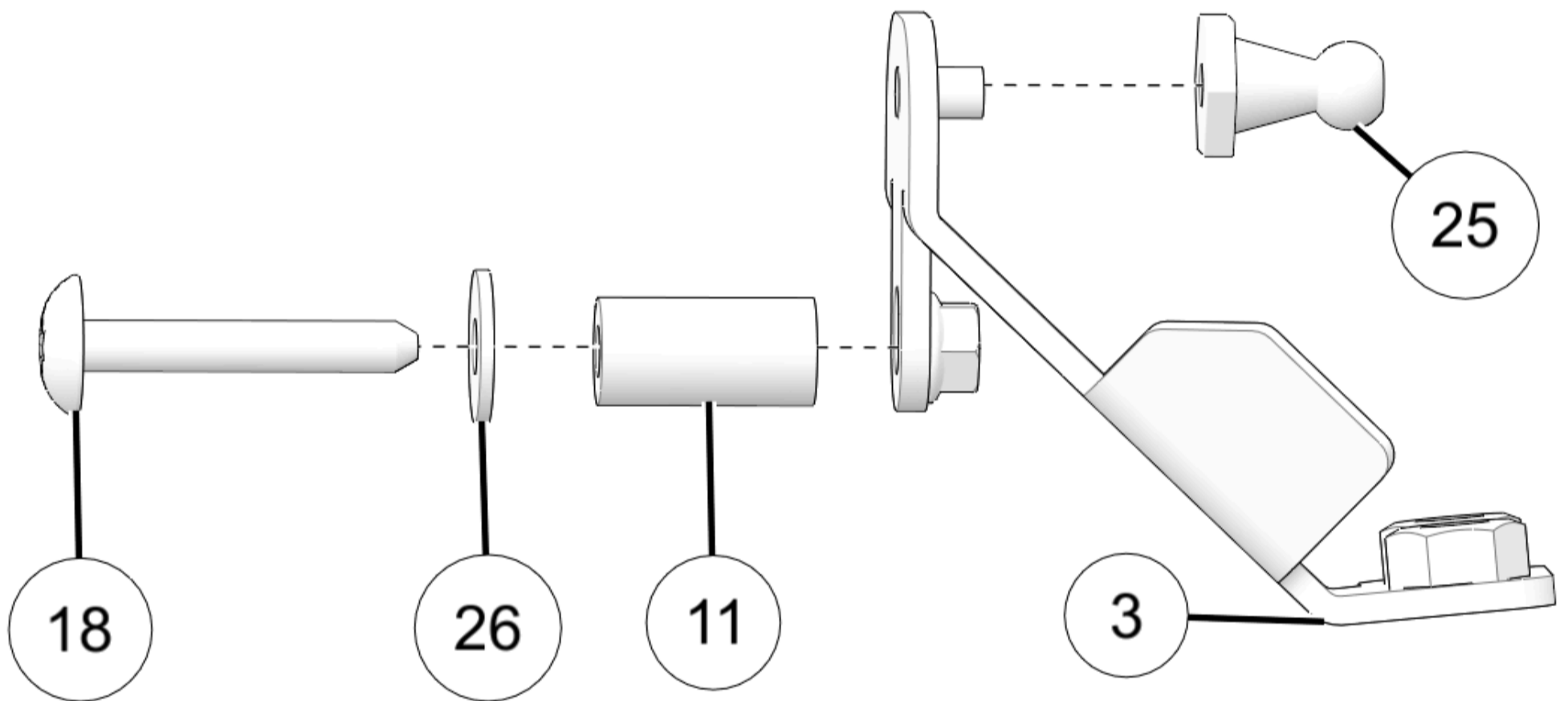
Assemble Lower Brackets

1. Install screw (18), washer (26), and spacer (11) in lower windshield bracket (3). Torque to specification. Install lower shock mount (25) onto threaded stud and tighten securely.

TORQUE

Screw (18):

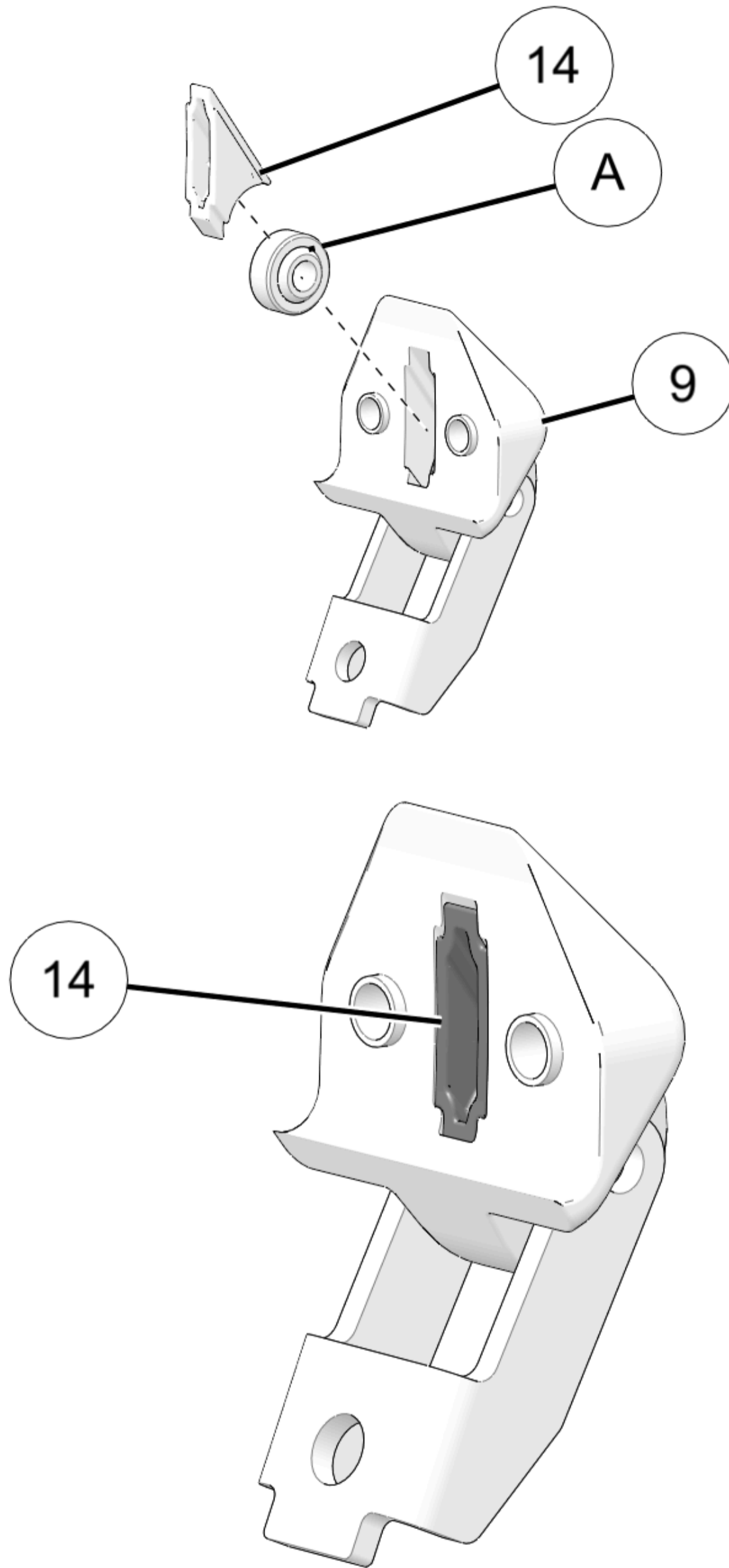
77 in-lbs (8.7 N·m)



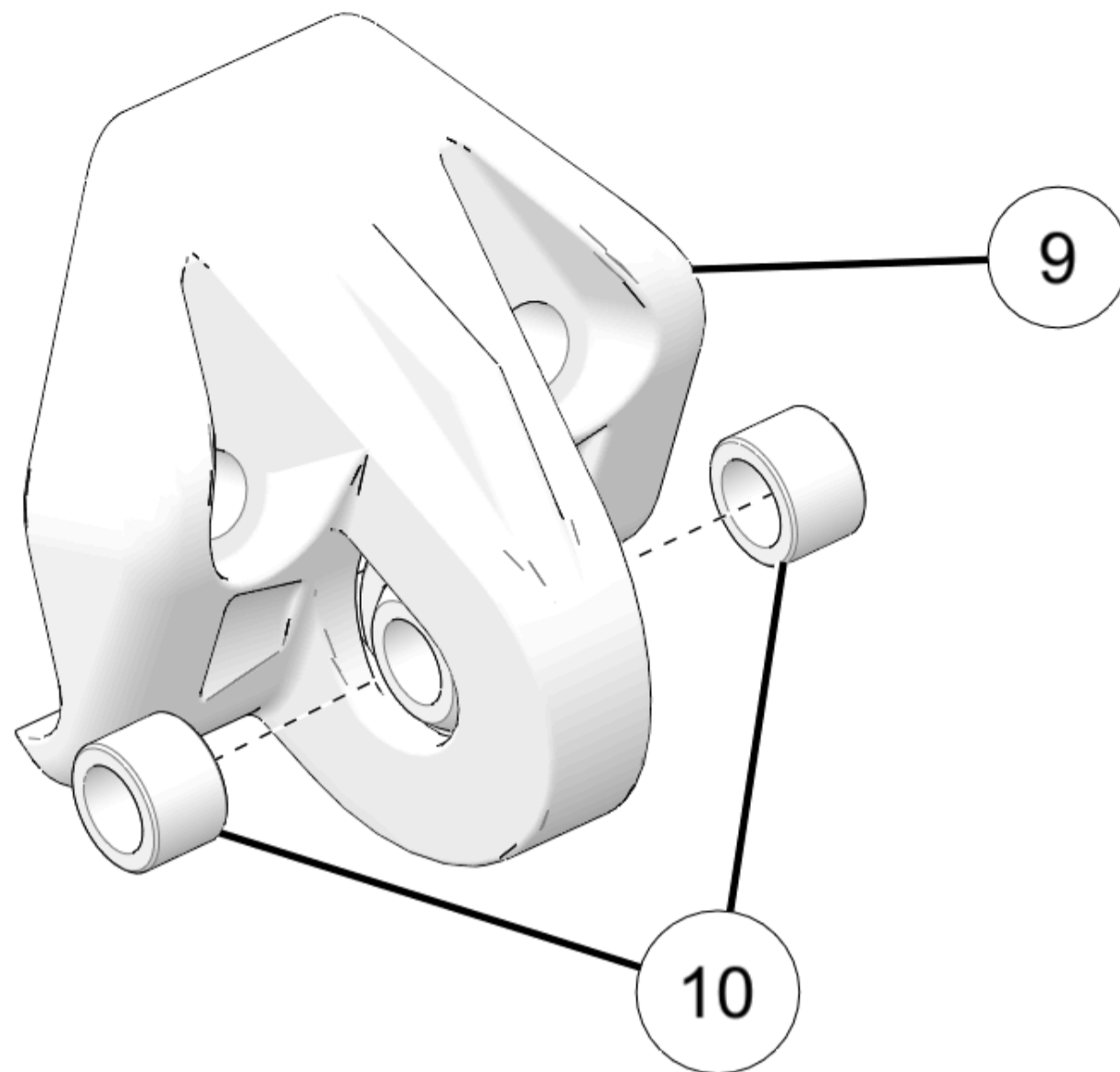
2. Repeat this step for other lower windshield bracket (2).

Assemble Upper Brackets

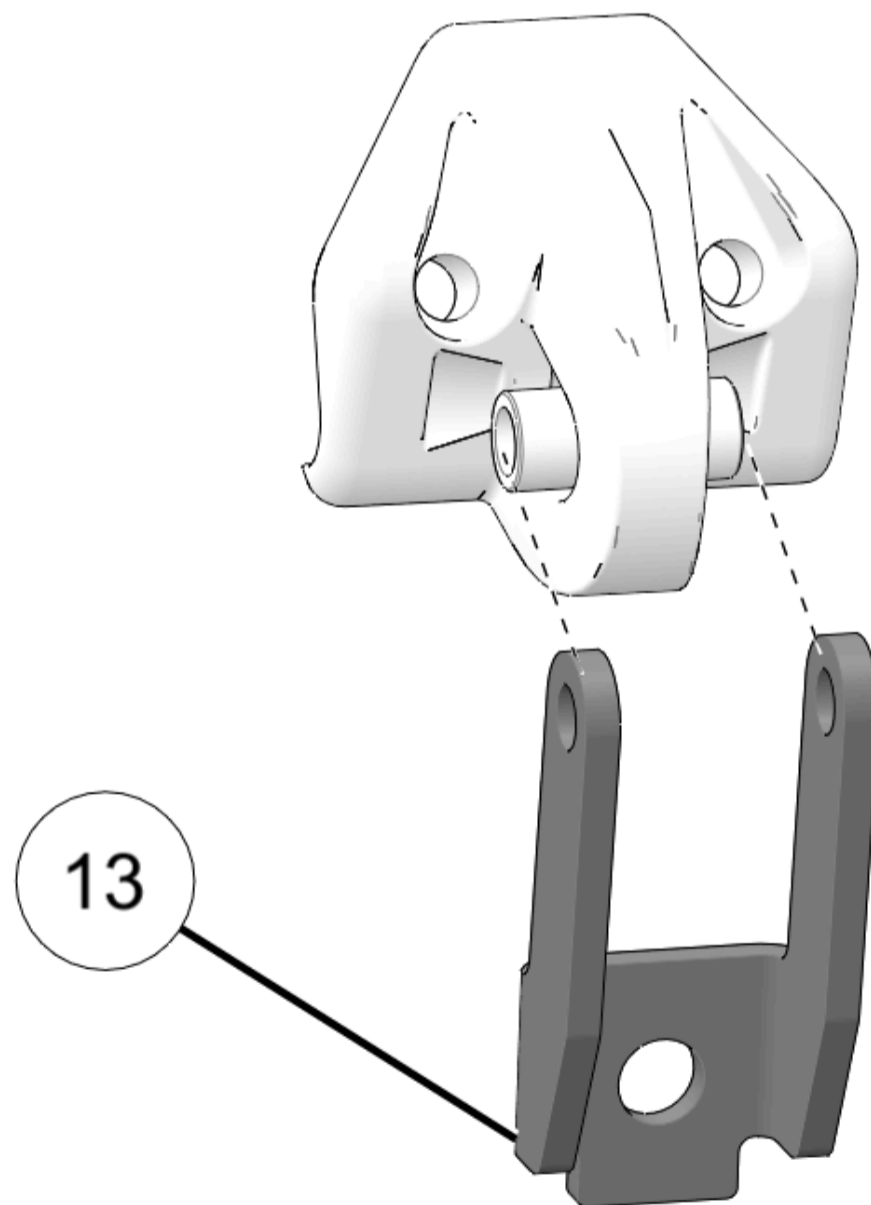
1. Put spherical bearing (A) and keeper (14) in upper bracket (9).



2. Put two spacers (10) next to spherical bearing.



3. Put hinge (13) alongside spacers. Make sure to line up the hinge holes with spacer holes.

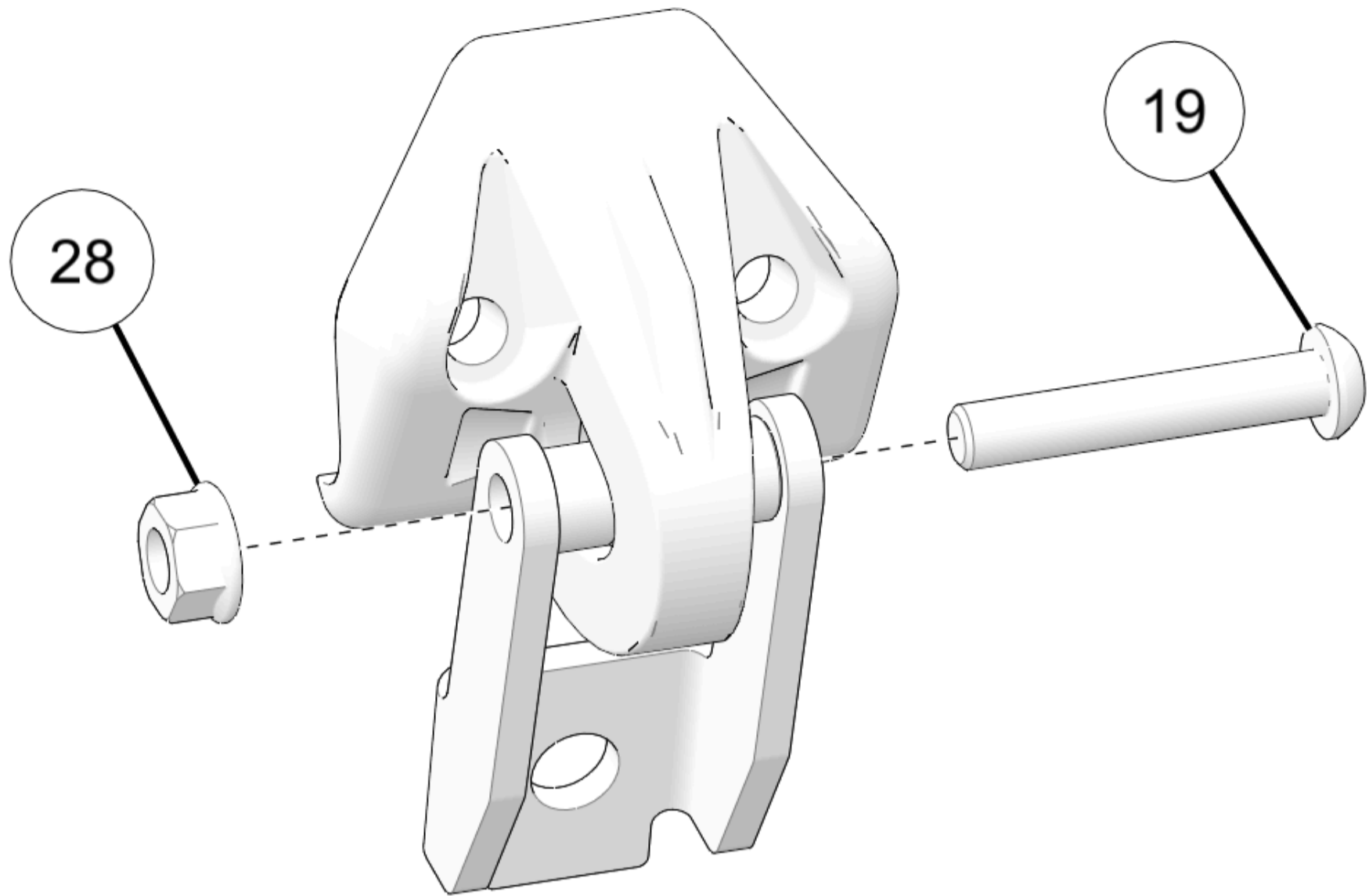


4. Install screw (19) through assembly and install nut (28). Torque to specification. Make sure hinge moves freely with no play.

TORQUE

Hinge Nut (28):

17.5 in-lbs (2 N·m)



5. Repeat this process for other Upper Bracket (9).

Assemble Windshield

1. Install hinges in upper corners of windshield assembly using screw (20), washer (27), and nut (23). Torque to specification.

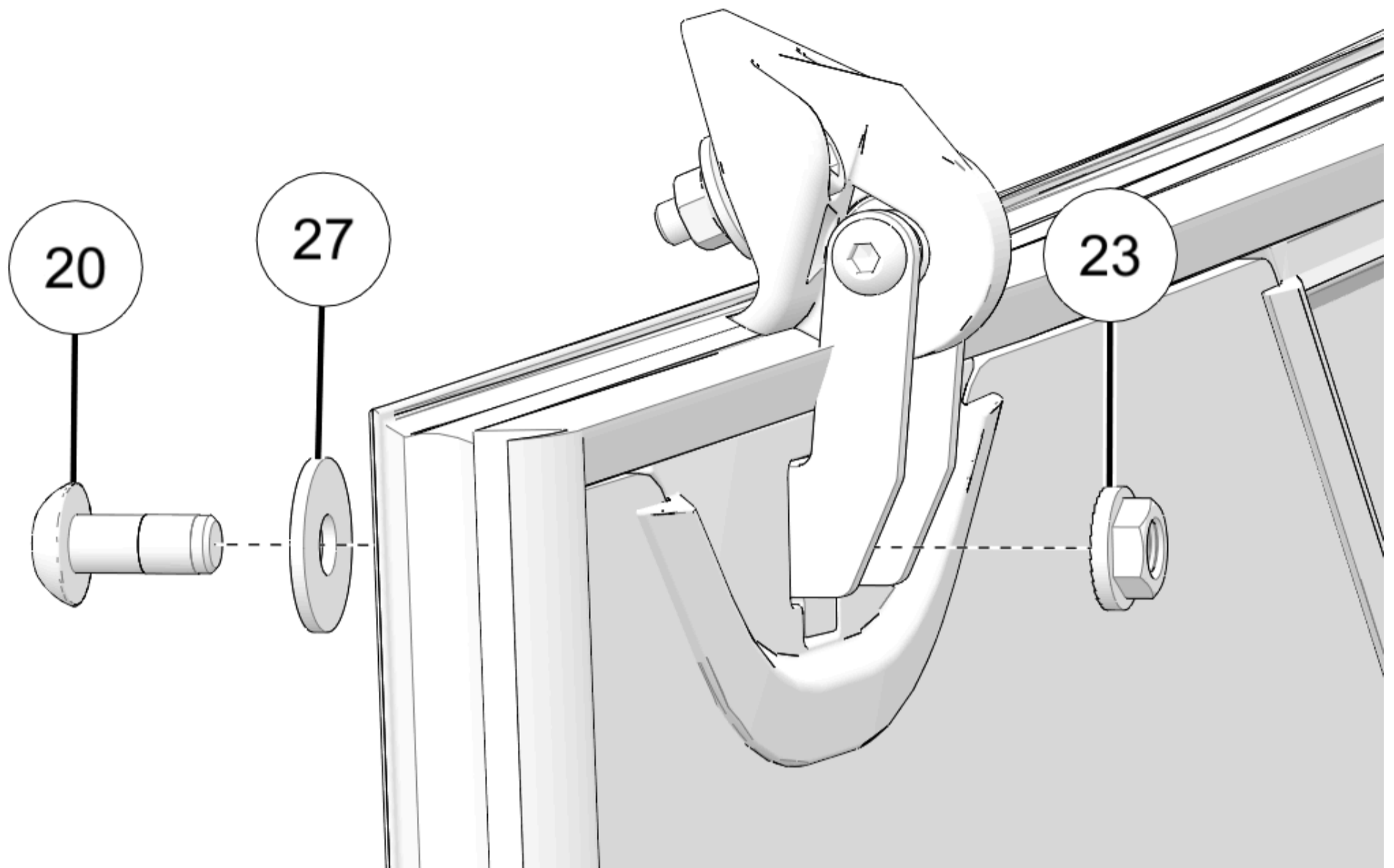
NOTICE

Right side shown; left side similar.

TORQUE

Upper Hinge Nut (23):

75.5 in-lbs (8.6 N·m)



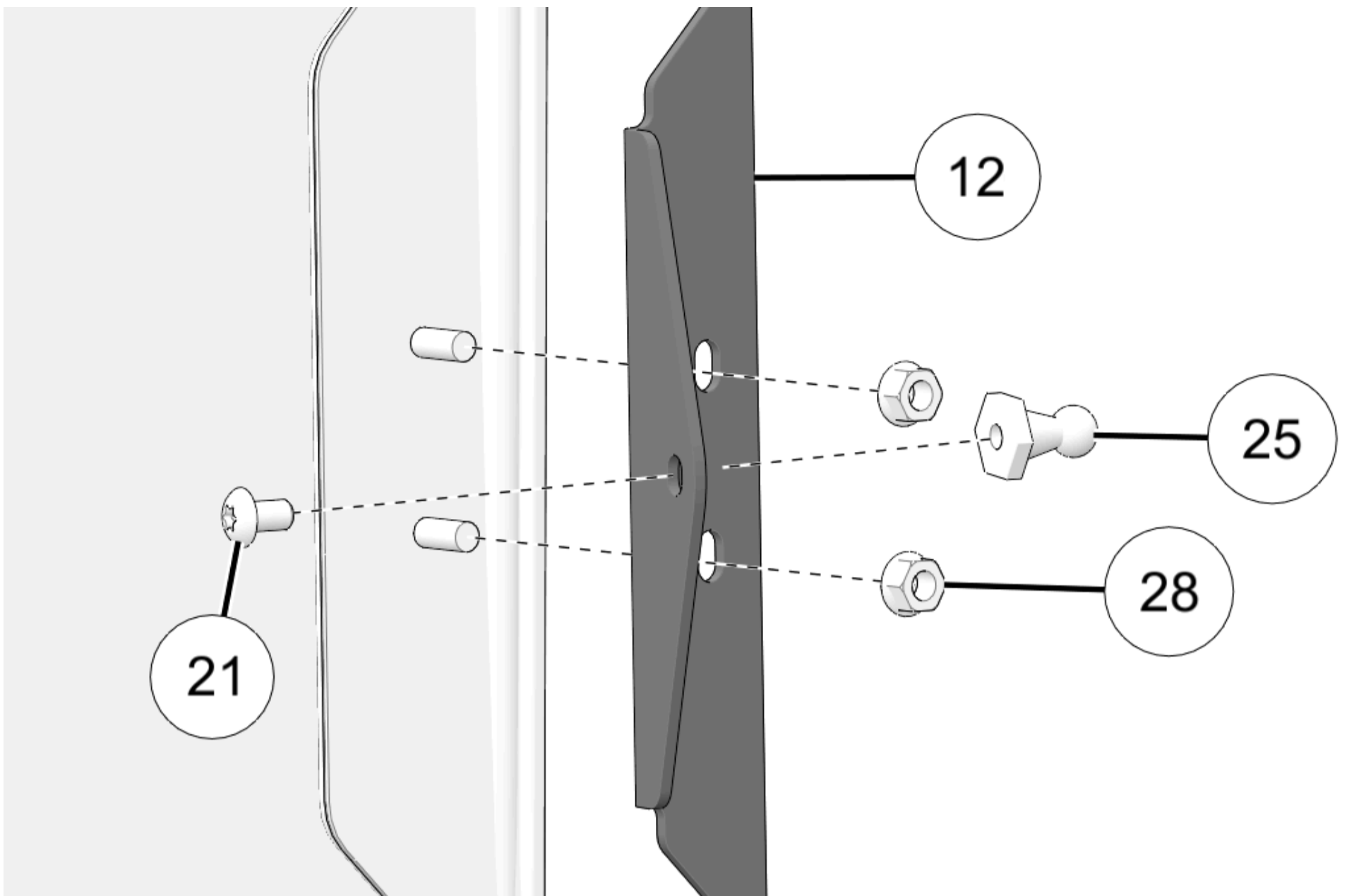
2. Install shock bracket (12) on side of windshield using nuts (28). Install shock ball stud (25) using screw (21). Torque to specification.

TORQUE

Shock Bracket Nuts (28):
26.5 in-lbs (3 N·m)

TORQUE

Ball Stud Screw (21):
23 in-lbs (2.6 N·m)



3. Install windshield lock handle bracket (12) in lower corner of windshield using two nuts (28). Torque to specification.

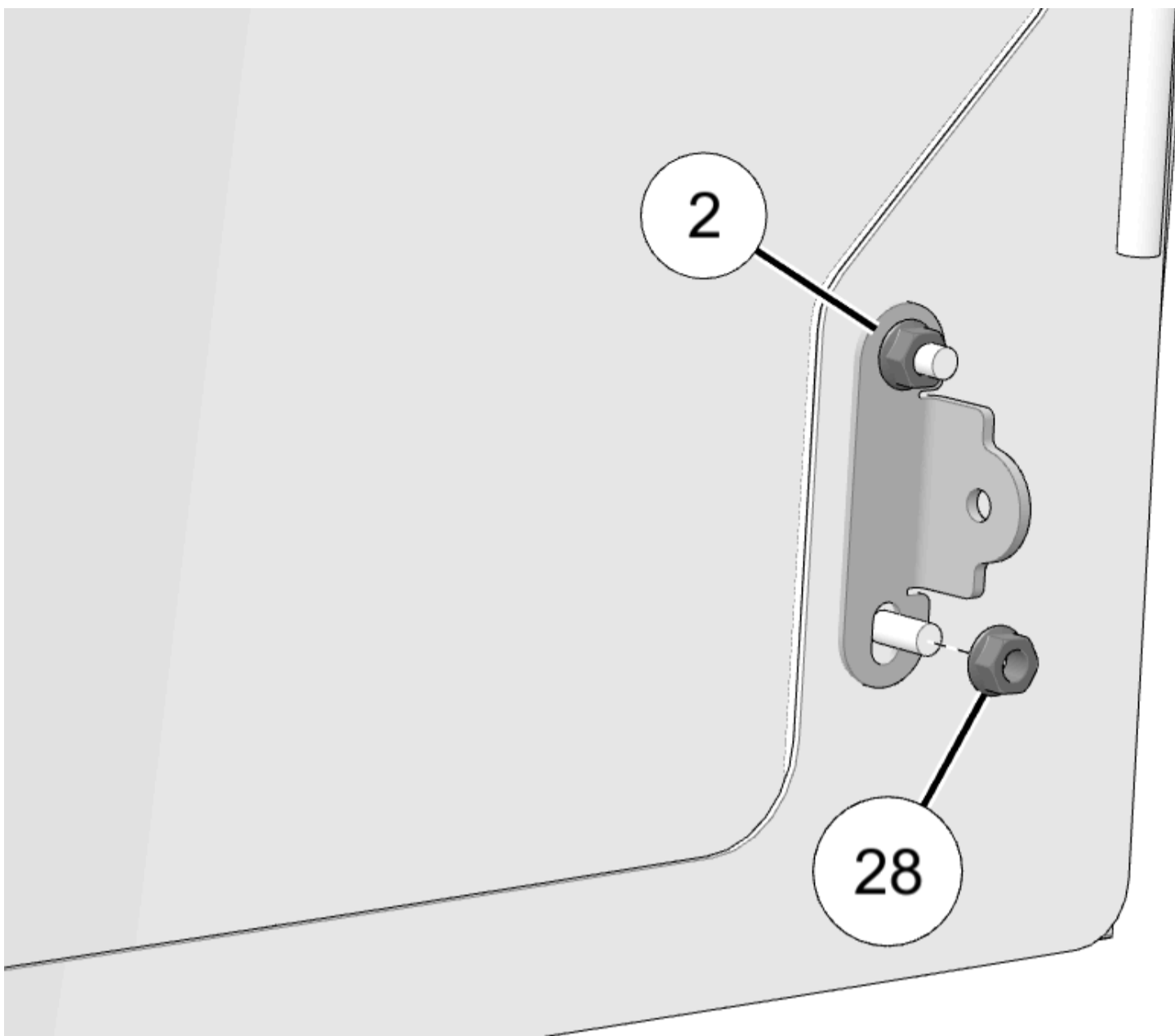
NOTICE

Right side shown; left side similar.

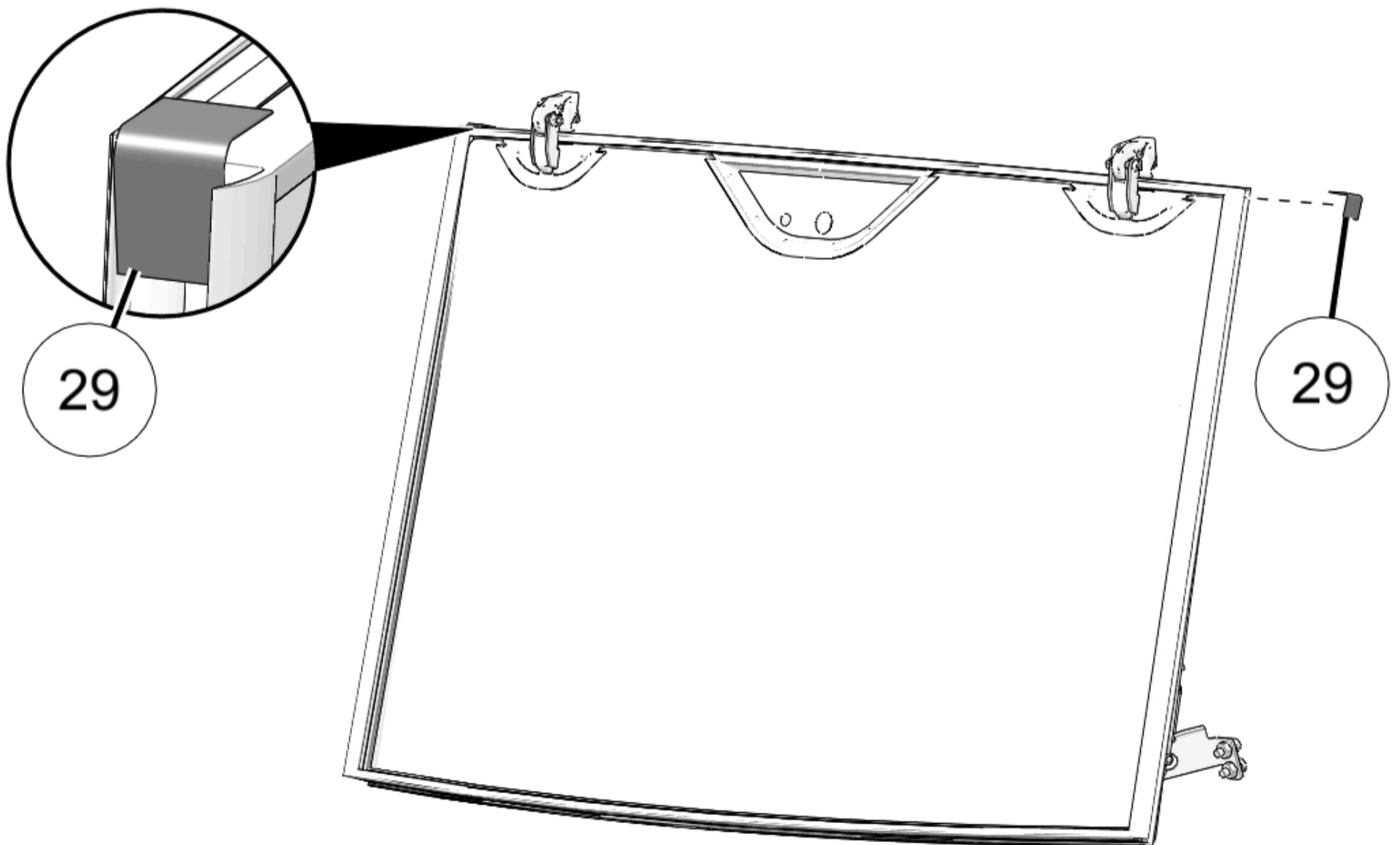
TORQUE

Handle Bracket Nuts (28):

26.5 in-lbs (3 N·m)



4. Install tape strips (29) in upper corners of windshield assembly.



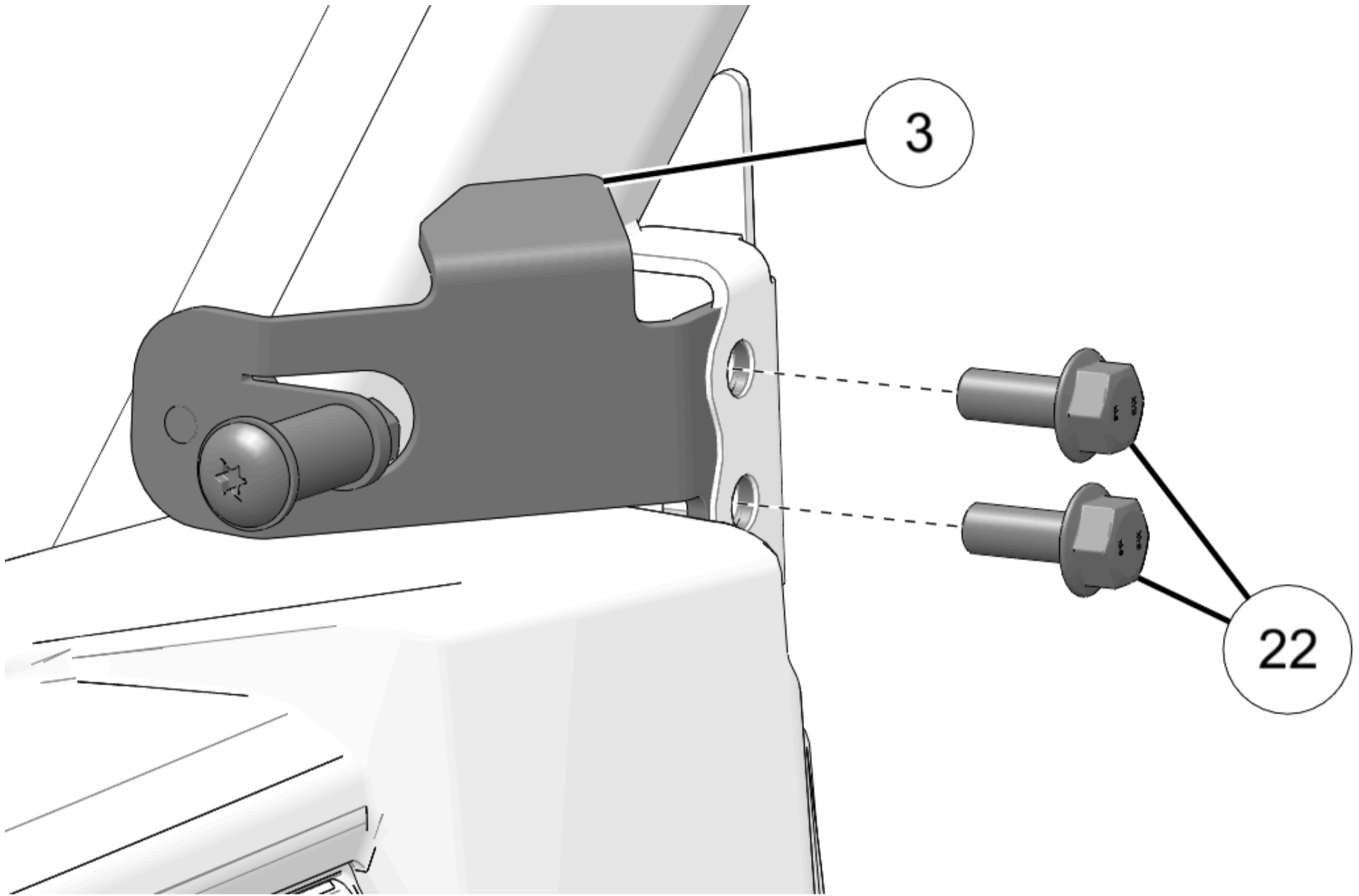
Install Windshield

1. Loosely install lower windshield bracket (3) on door hinge mount using screws (22).

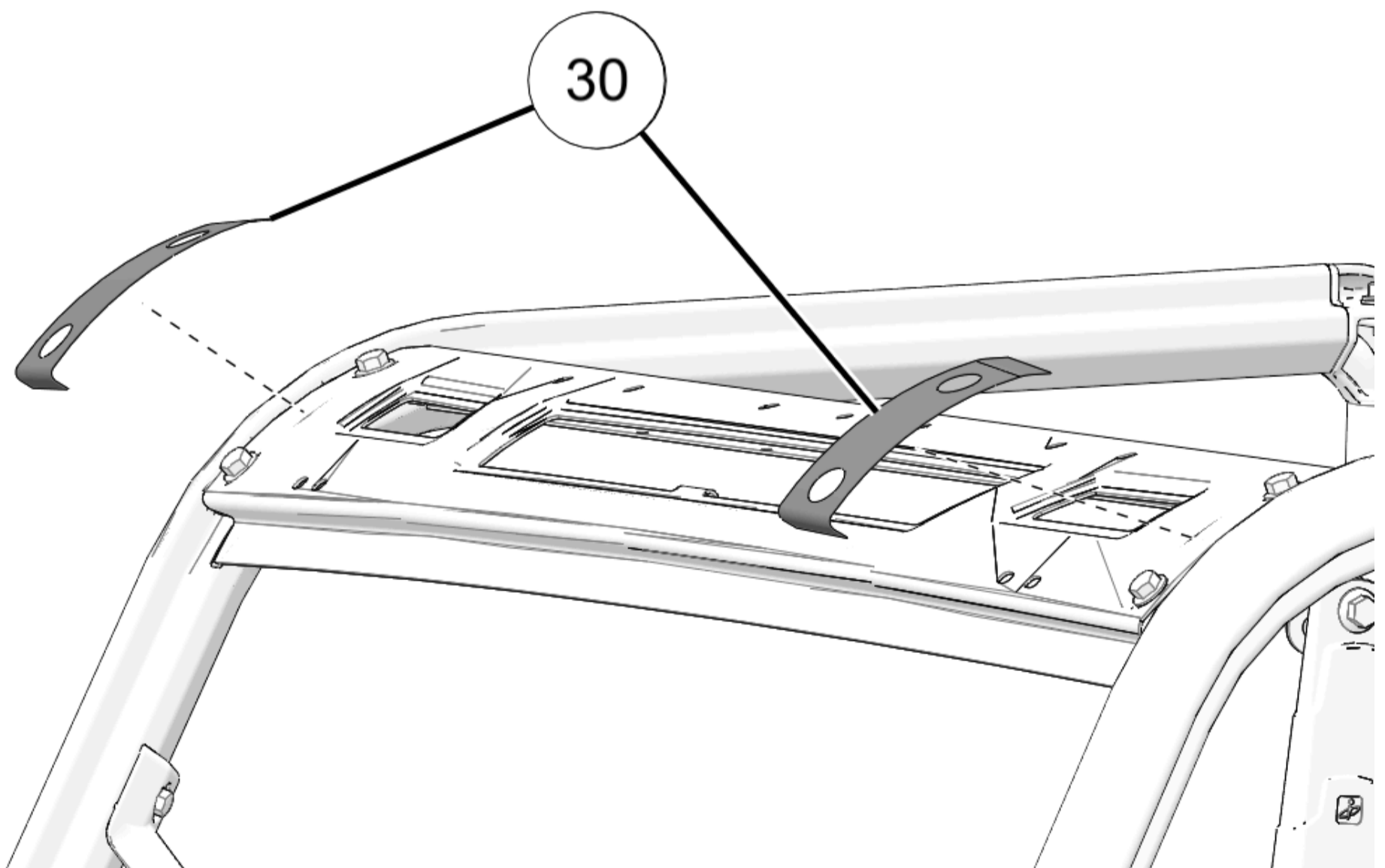
Do not torque at this time.

NOTICE

Right side shown; left side similar.



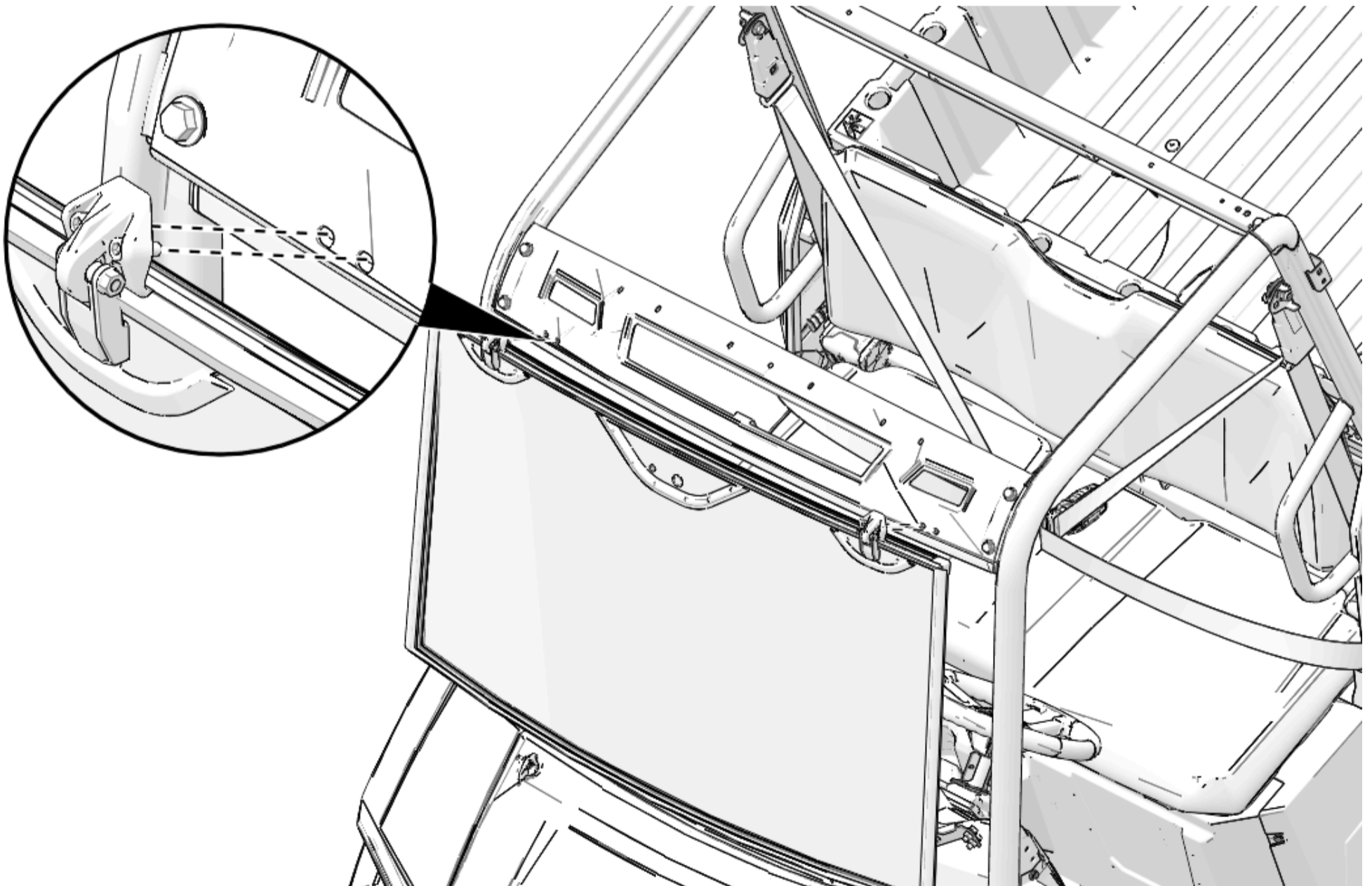
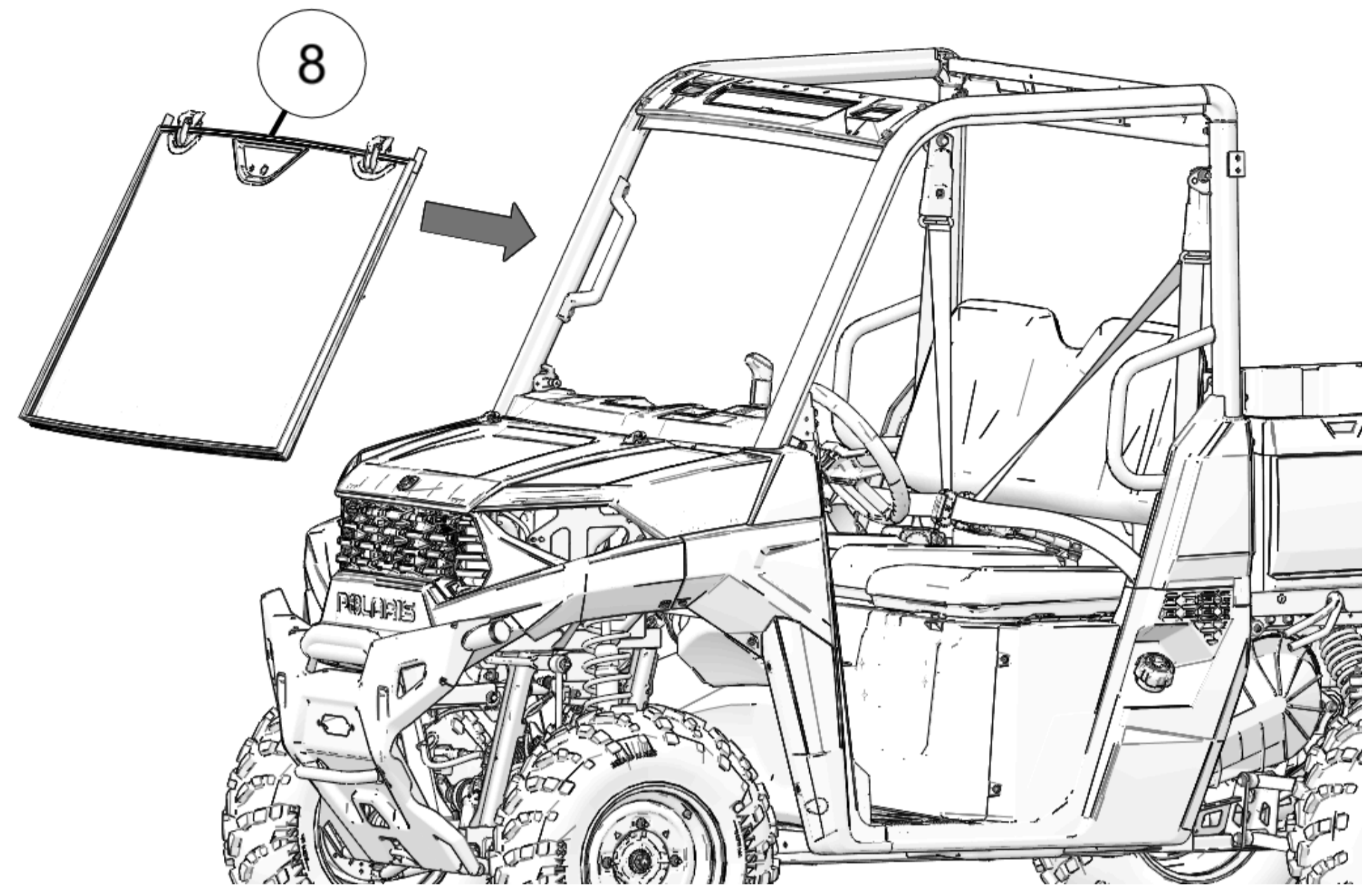
2. Install two tape strips (30) in upper corners of vehicle ROPS.



3. Put windshield assembly (8) on vehicle. Make sure upper hinges line up with existing holes on vehicle.

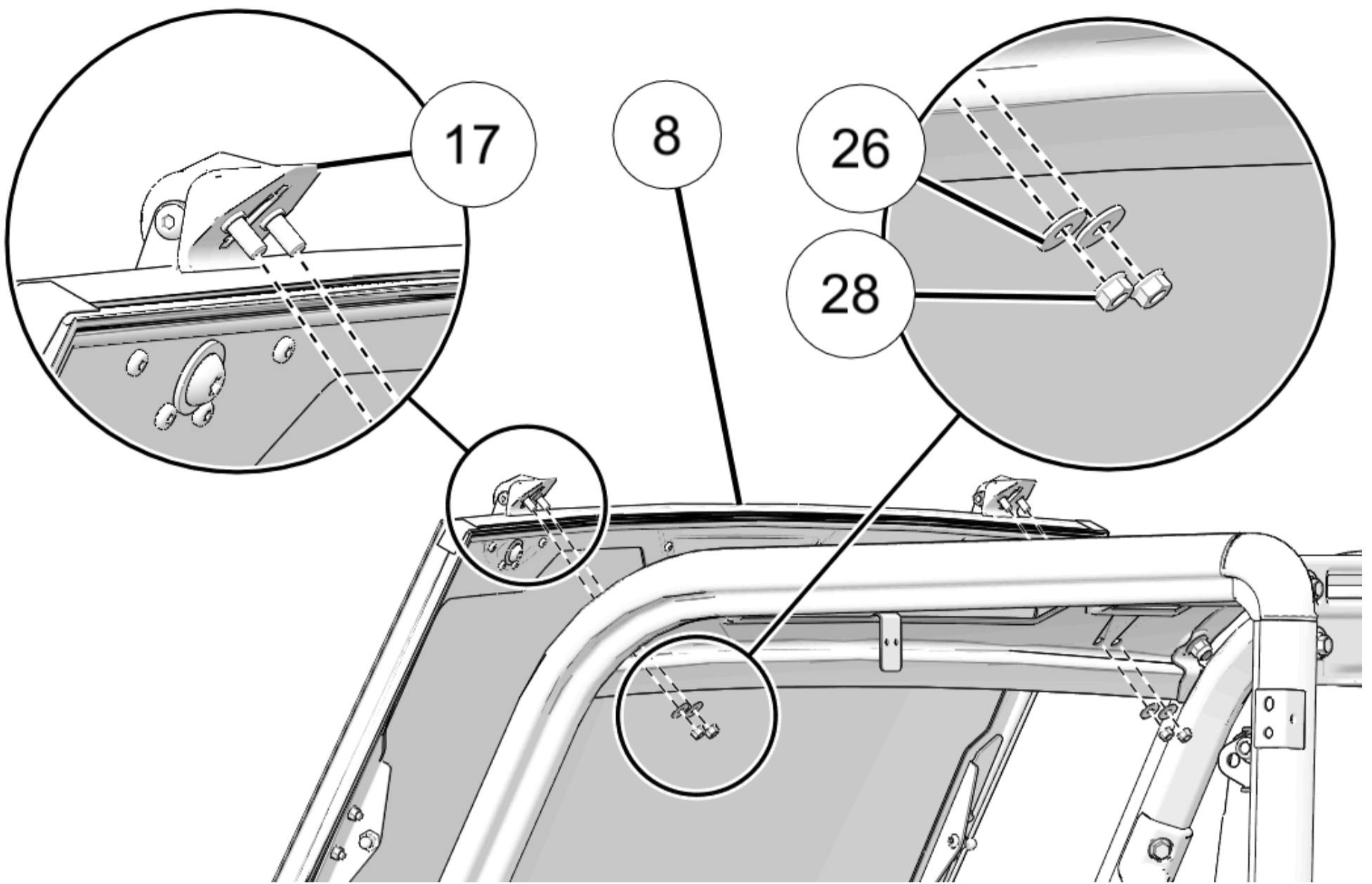
IMPORTANT

Enlist a helper when installing and working with windshield assembly.



4. Loosely attach upper windshield hinges (17) to vehicle using washers (26) and nuts (28).

Do not torque at this time.

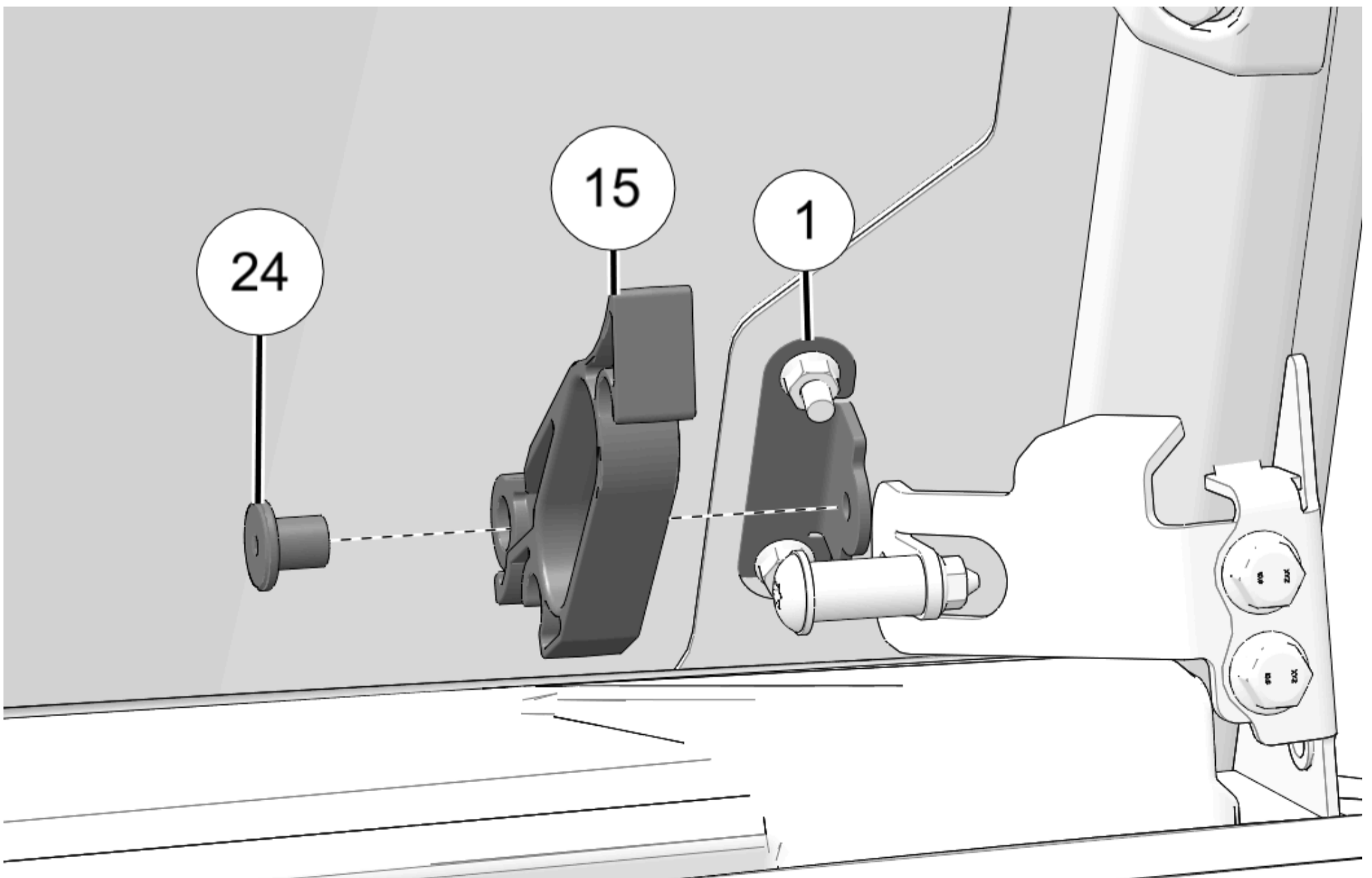


5. Install windshield locking handle (15) to stud on bracket (1) using spacer (24). Torque to specification.

TORQUE

Locking Handle Spacer (24):

52 in-lbs (5.9 N·m)



6. Adjust final fit of windshield. Make sure windshield assembly is centered in ROPS opening.

7. Torque all fasteners to specification at this time.

TORQUE

Lower Windshield Bracket Screws (22):

100 in-lbs (11.2 N·m)

TORQUE

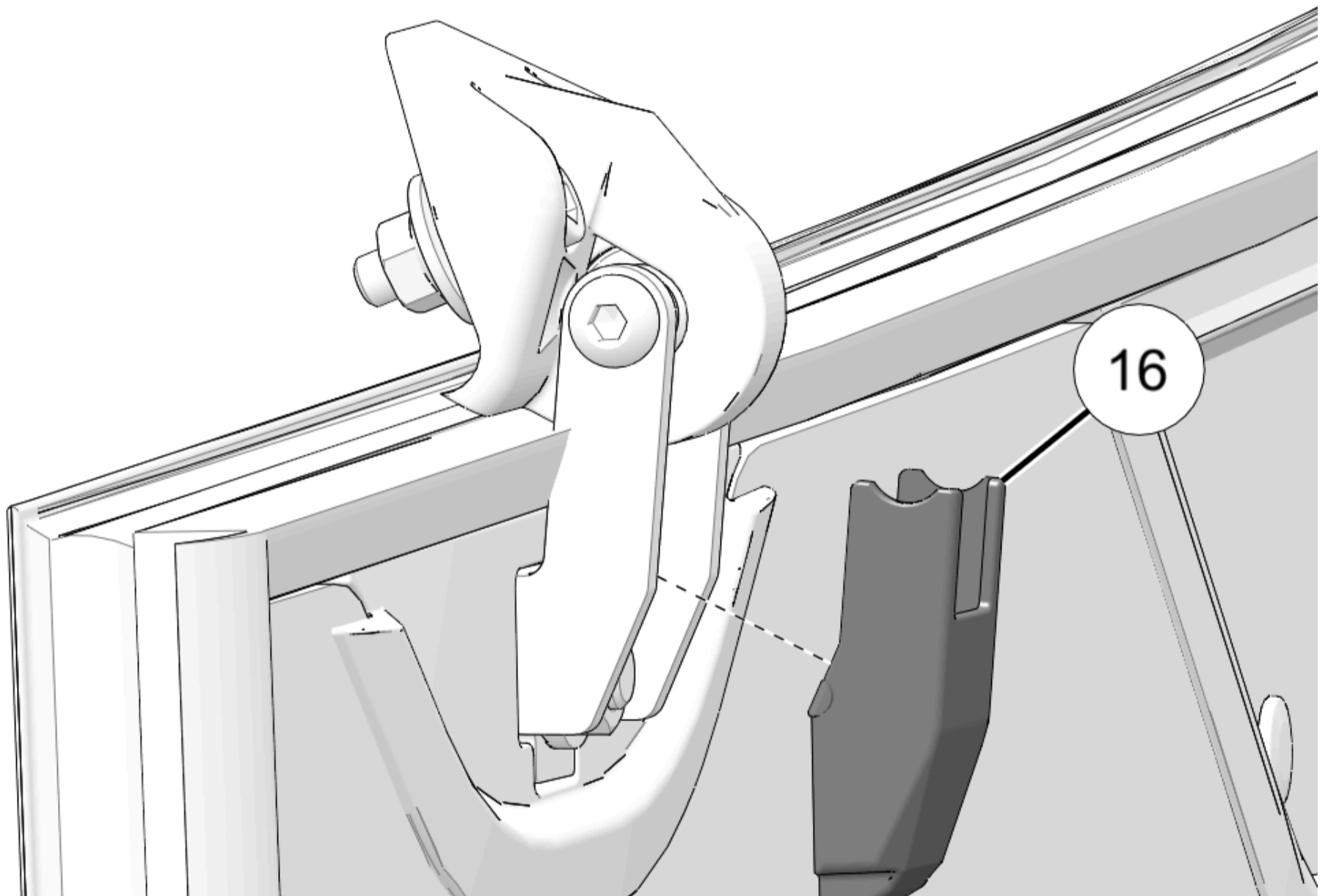
Upper Windshield Hinge Nuts (28):

70 in-lbs (8 N·m)

8. Install cap (16) on upper hinge.

NOTICE

Right side shown; left side similar.



9. Find two ball studs (25). Install shock (7) on ball studs with shock body on the bottom.

NOTICE

Installing the shocks is easier if the windshield assembly is tilted up to meet the extended end of the shock.

TIP

Apply a dab of Polaris® All-Season Grease to each ball stud before installing shocks.

