

Contents

Select Language ▼

Powered by [Google Translate](#)

Door Mounted Side Mirror Kit

P/N 2889241

Missing or Damaged Parts

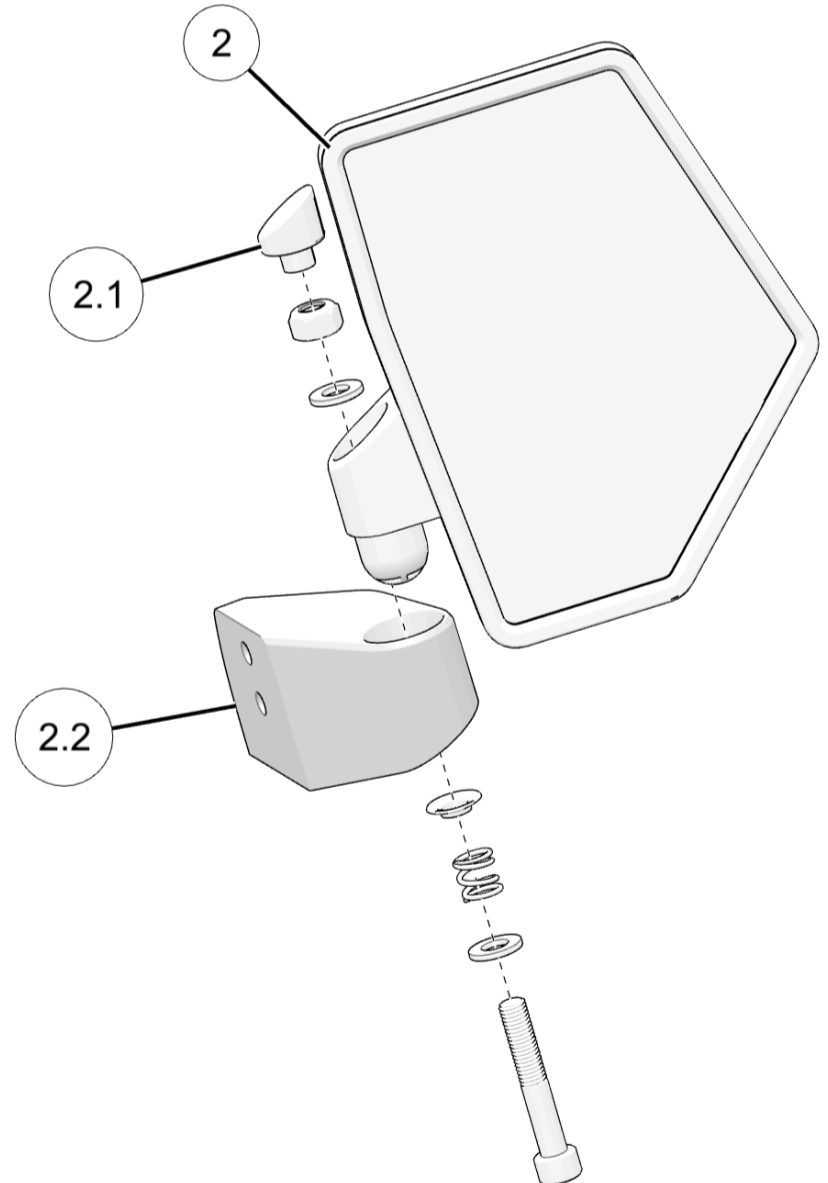
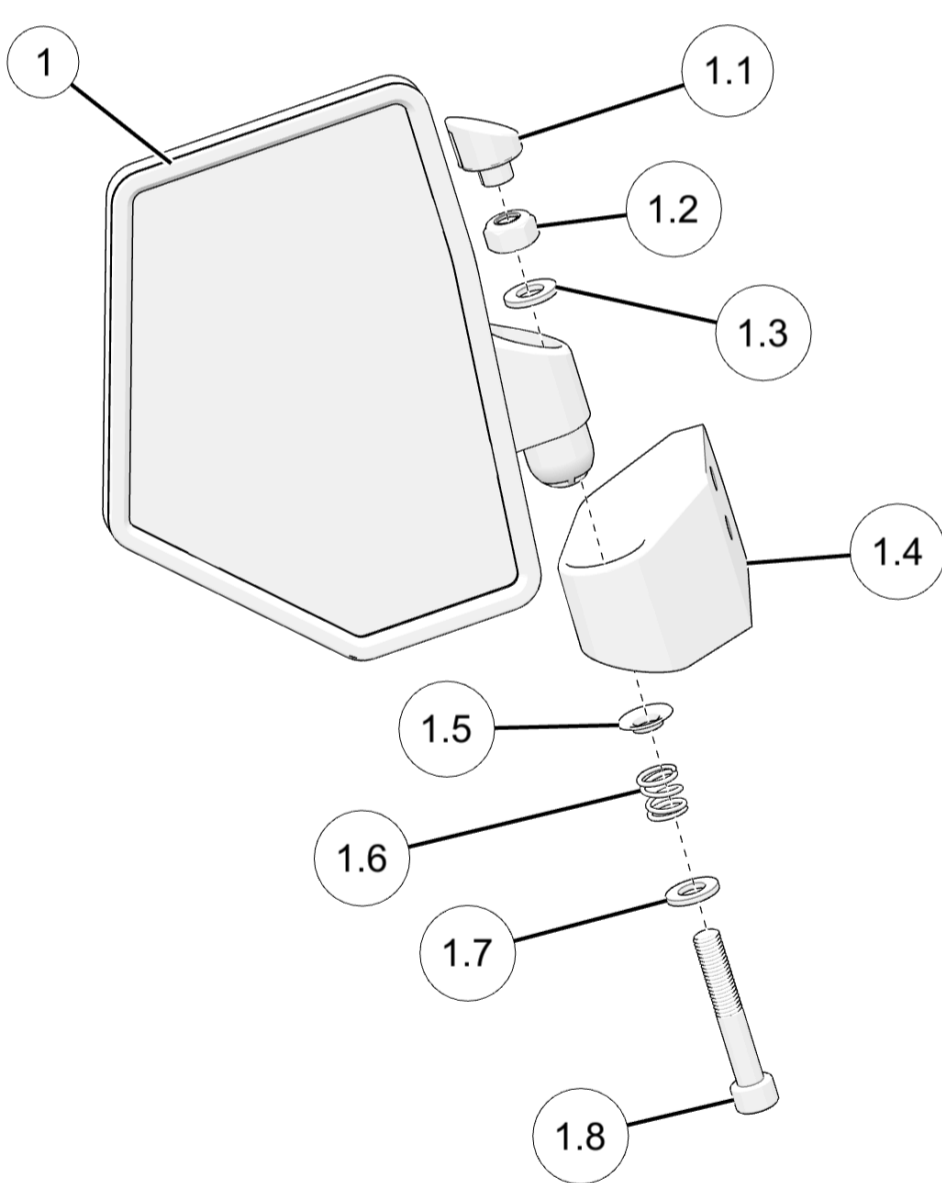
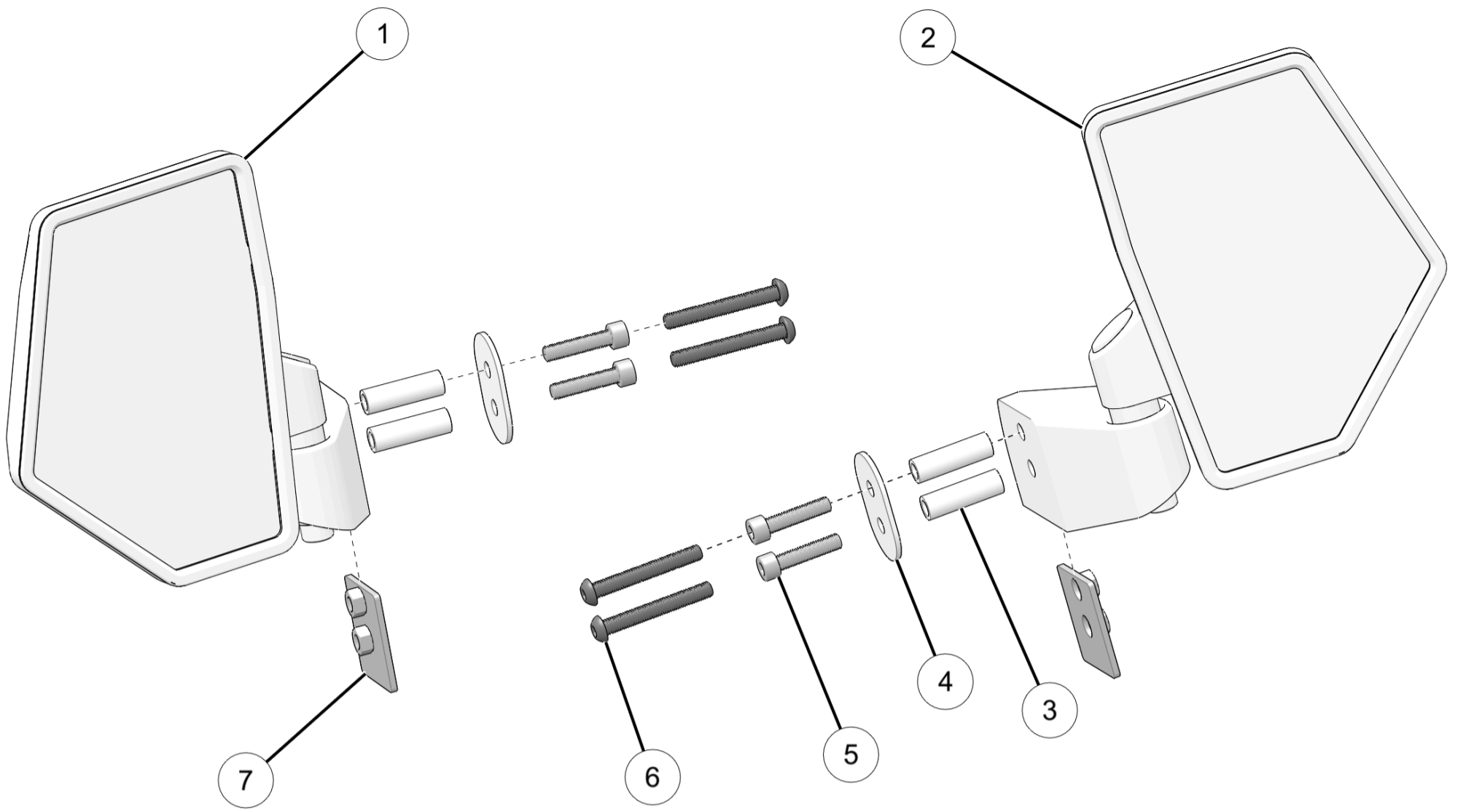
Before beginning assembly, inspect the kit and its component(s) to be sure all parts and tools are accounted for and not damaged. If missing parts or parts are damaged, please contact your Selling Dealer for assistance.

If your accessory was purchased online, please contact POLARIS® customer service at **1-800-POLARIS** (US & Canada only).

Application

Verify accessory fitment at www.polaris.com.

Kit Contents



| Ref | Qty | Part Description | P/N Available Separately | Available Service Kit |
|-----|-----|-------------------------|--------------------------|-----------------------|
| 1 | 1 | Mirror Assembly, Left | n/a | 2209162 |
| 1.1 | 1 | - Mirror Bolt Cap, Left | n/a | 2209164 |
| 1.2 | 1 | - Nut, M10 | n/a | 2209164 |
| 1.3 | 2 | - Rubber Washer | n/a | 2209164 |
| 1.4 | 1 | - Mirror Base, Left | n/a | 2209164 |

| Ref | Qty | Part Description | P/N Available Separately | Available Service Kit |
|-----|-----|---|--------------------------|-----------------------|
| 1.5 | 2 | - Spring Mount Spacer | n/a | 2209164 |
| 1.6 | 2 | - Compression Spring | n/a | 2209164 |
| 1.7 | 2 | - Washer, M10 | n/a | 2209164 |
| 1.8 | 2 | - Screw, Socket Head, (M10 x 60 mm) | n/a | 2209164 |
| 2 | 1 | Mirror Assembly, Right | n/a | 2209163 |
| 2.1 | 1 | - Mirror Bolt Cap, Right | n/a | 2209164 |
| 2.2 | 1 | - Mirror Base, Right | n/a | 2209164 |
| 3 | 4 | Spacer, (0.5 OD x 8.5 ID x 4 mm) | n/a | 2209164 |
| 4 | 2 | Mirror Backer Plate | n/a | 2209164 |
| 5 | 4 | Screw, Socket Head, (M8 x 35 mm) | n/a | 2209164 |
| 6 | 4 | Screw, Button Head Hex, (M8 x 1.25 x 60 mm) | n/a | 2209164 |
| 7 | 2 | Backer Plate, Weld Nut | n/a | n/a |
| 8 | 1 | Door Mirror Templates (not shown) | 9940513 | n/a |

Tools Required

- Safety Glasses
- Center Punch
- Drill
- Drill Bit:
 - 1/2 in (13 mm)
 - 1/8 in (3 mm)
 - 11/32 in (9 mm)
- Scissors
- Socket Set, Metric
- Socket Set, SAE
- Socket Set, Torx[®] Bit

Consumables Required

- Tape, Masking

Important

Your Door Mounted Side Mirror Kit is exclusively designed for your vehicle. Please read the installation instructions thoroughly before beginning. Installation is easier if the vehicle is clean and free of debris. For your safety, and to ensure a satisfactory installation, perform all installation steps correctly in the sequence shown.

Installation Instructions

Vehicle Preparation

General

1. Park vehicle on a flat surface.
2. Shift vehicle into PARK.
3. Turn key to OFF position and remove key.

Prepare Template

1. Cut out template along outer border.

Prepare Doors

Ranger 1000 and XP 1000 Models

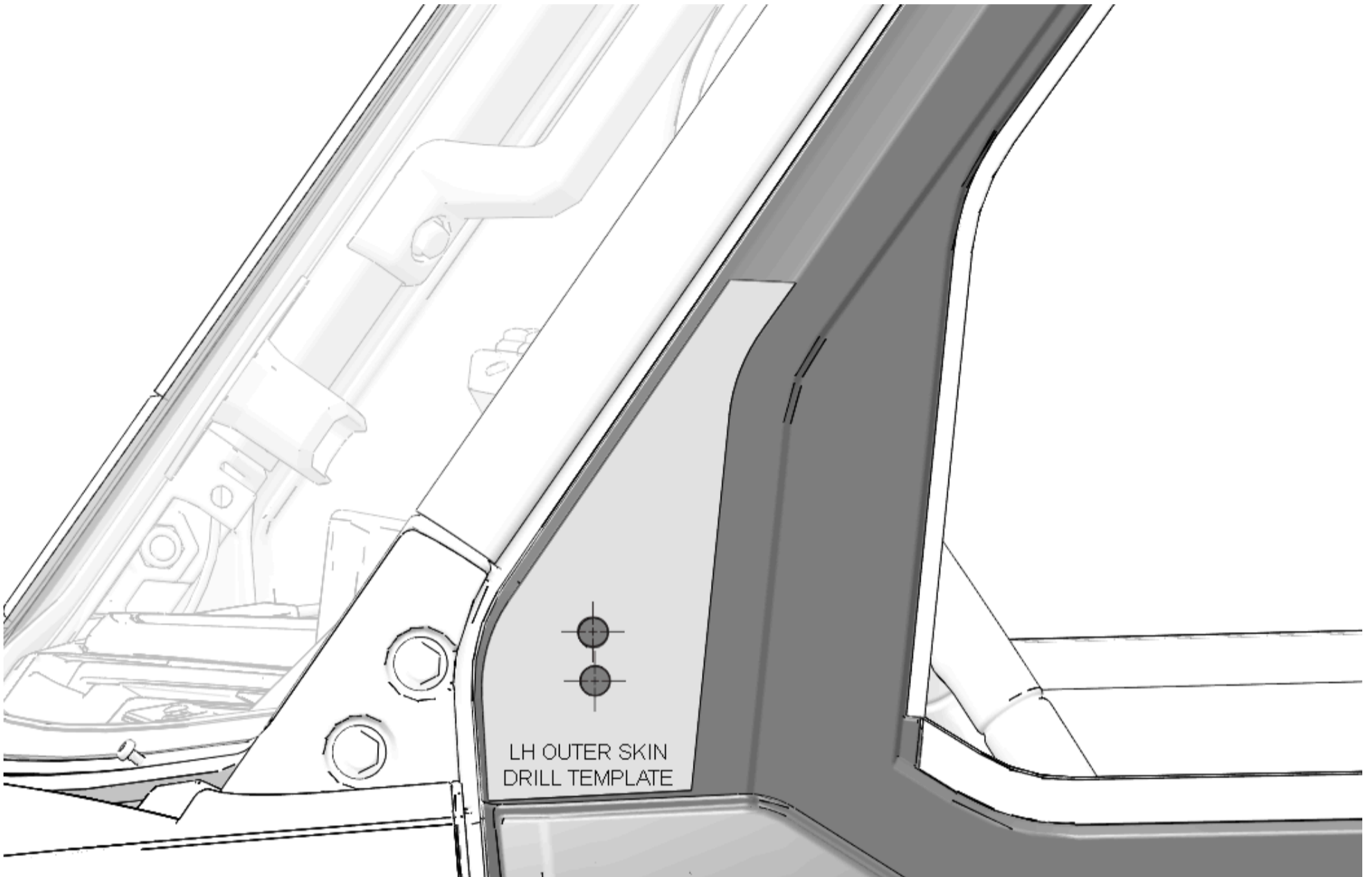
NOTICE

Left side shown; Right side similar.

1. Tape outer skin template to outside edge of driver side front door, as shown.

IMPORTANT

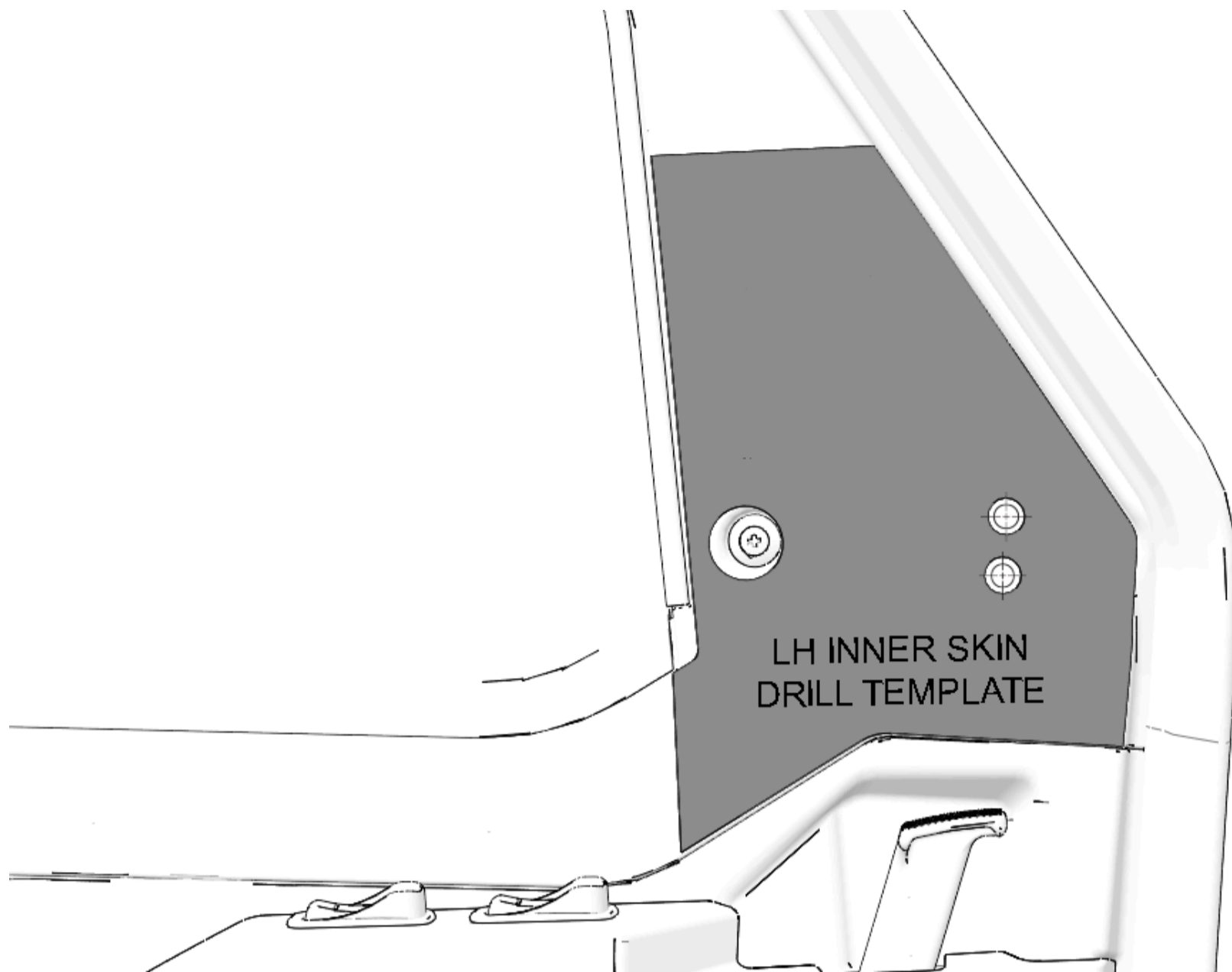
Make sure template curve aligns with door curve.



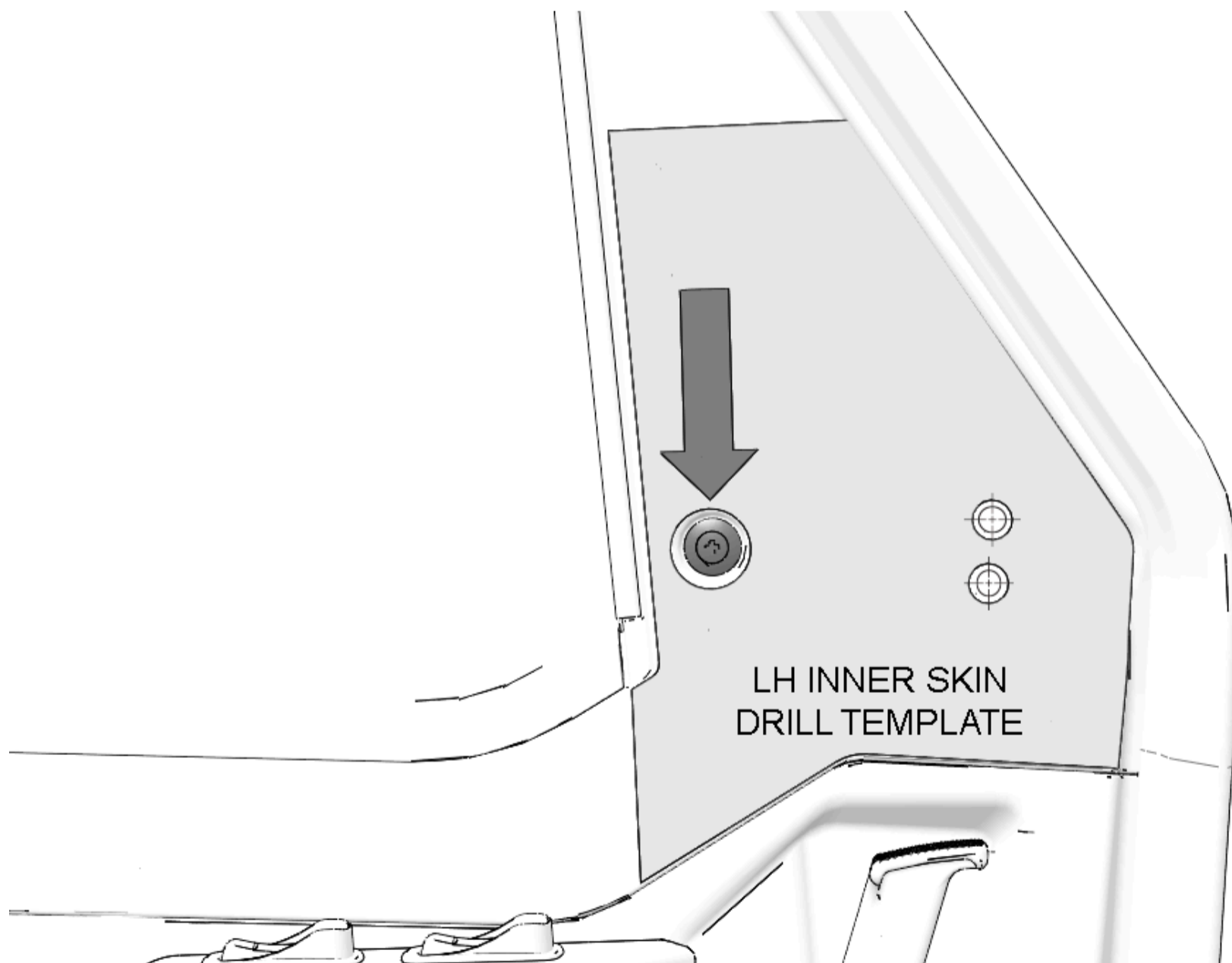
2. Tape inner skin template to inside edge of driver side door, as shown.

IMPORTANT

Make sure template curve aligns with door curve.



3. Align bolt cut-out on template over the bolt on the inside of door.



4. Mark each template cross-hair with center punch.

5. Remove paper templates.

6. Drill pilot hole through the center of each marked location on the outside of door.

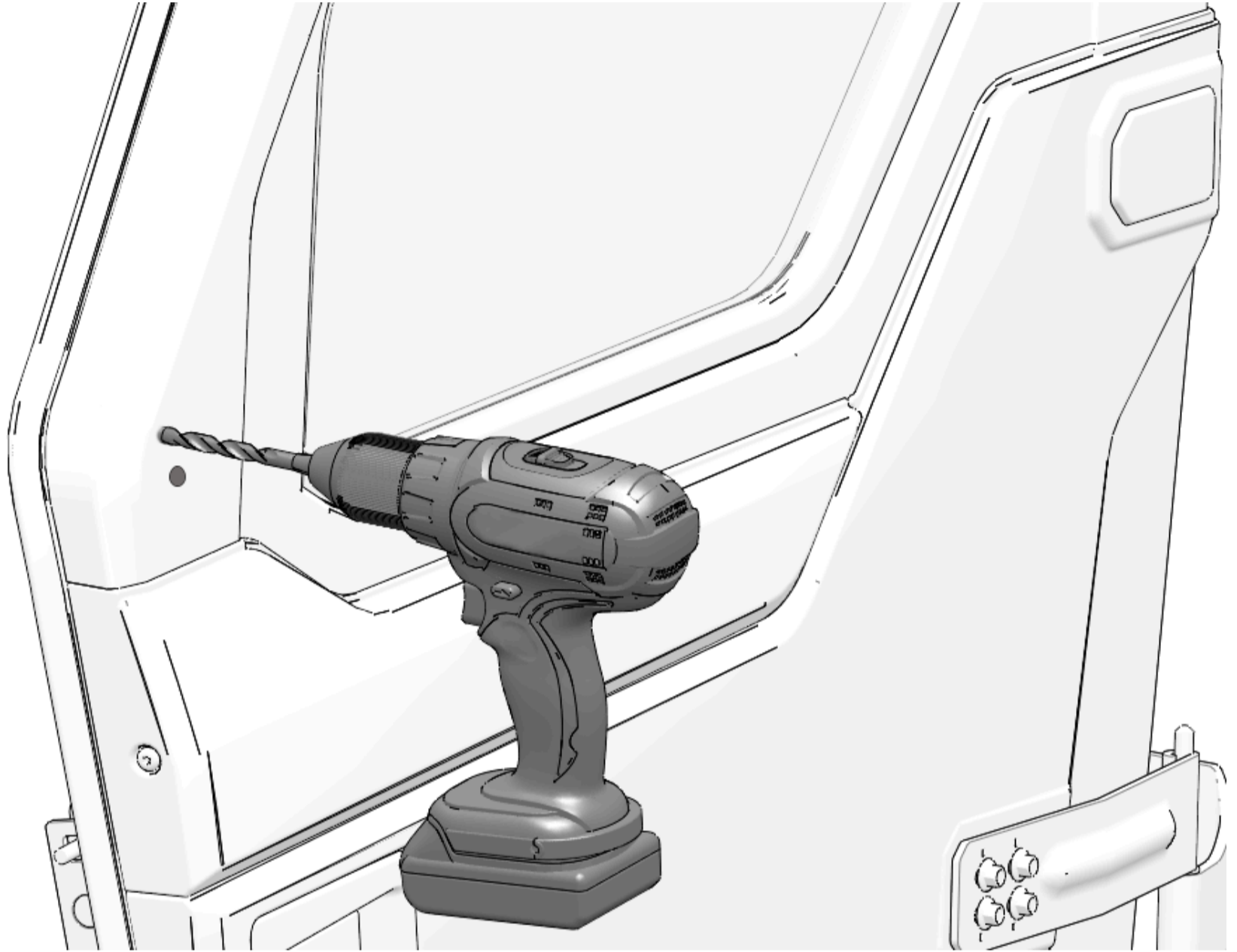
NOTICE

Do not drill straight through entire door. To prevent misalignment of spacer holes, drill each pilot hole through one layer of plastic on the outside of door.

MEASUREMENT

Drill Bit Size:

1/8 in (3 mm)



7. Drill pilot hole through the center of each marked location on the inside of door.

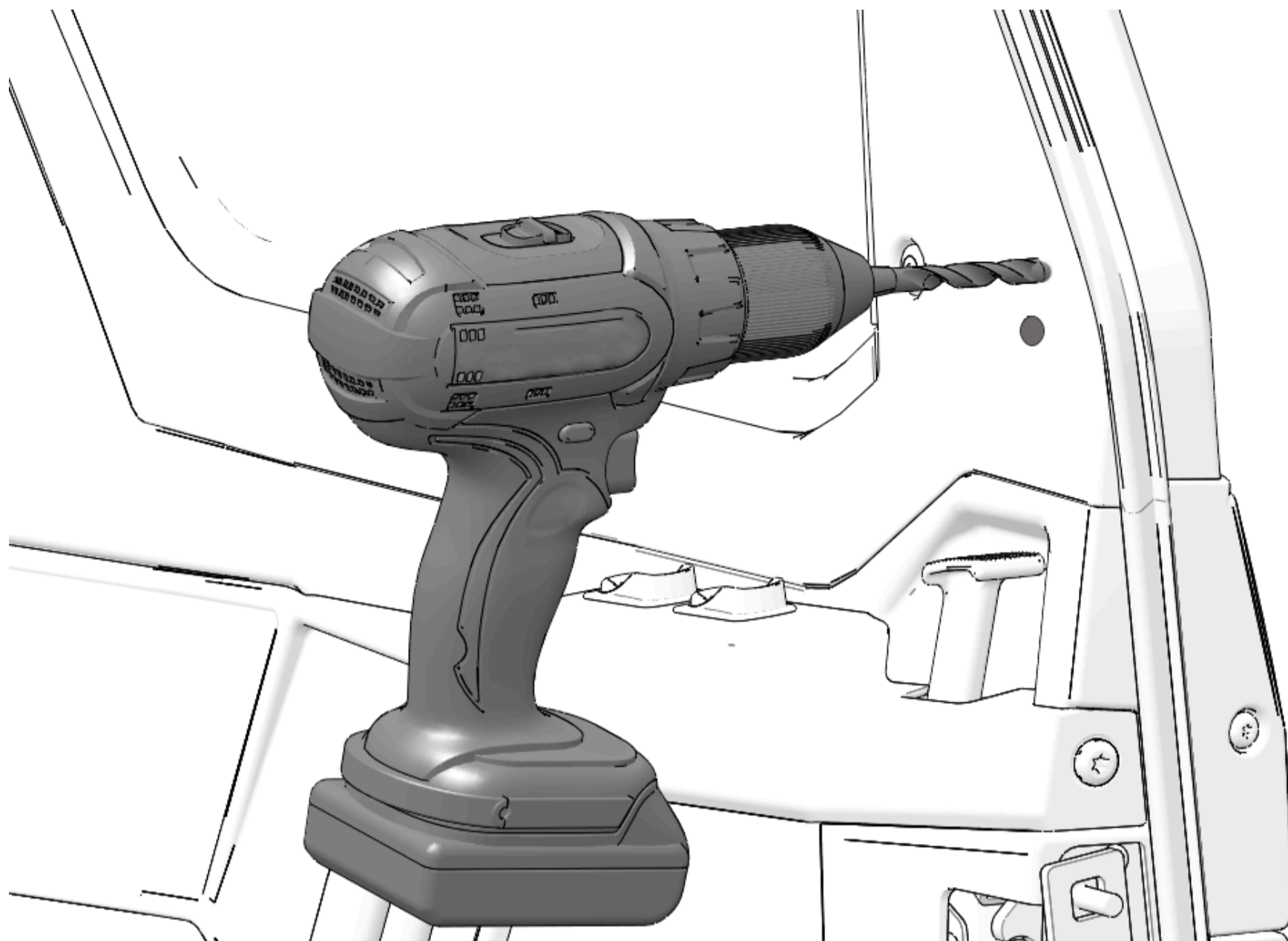
NOTICE

Do not drill straight through entire door. To prevent misalignment of spacer holes, drill each pilot hole through one layer of plastic on the inside of door.

MEASUREMENT

Drill Bit Size:

1/8 in (3 mm)



8. Drill larger spacer hole through each pilot hole on outside of door.

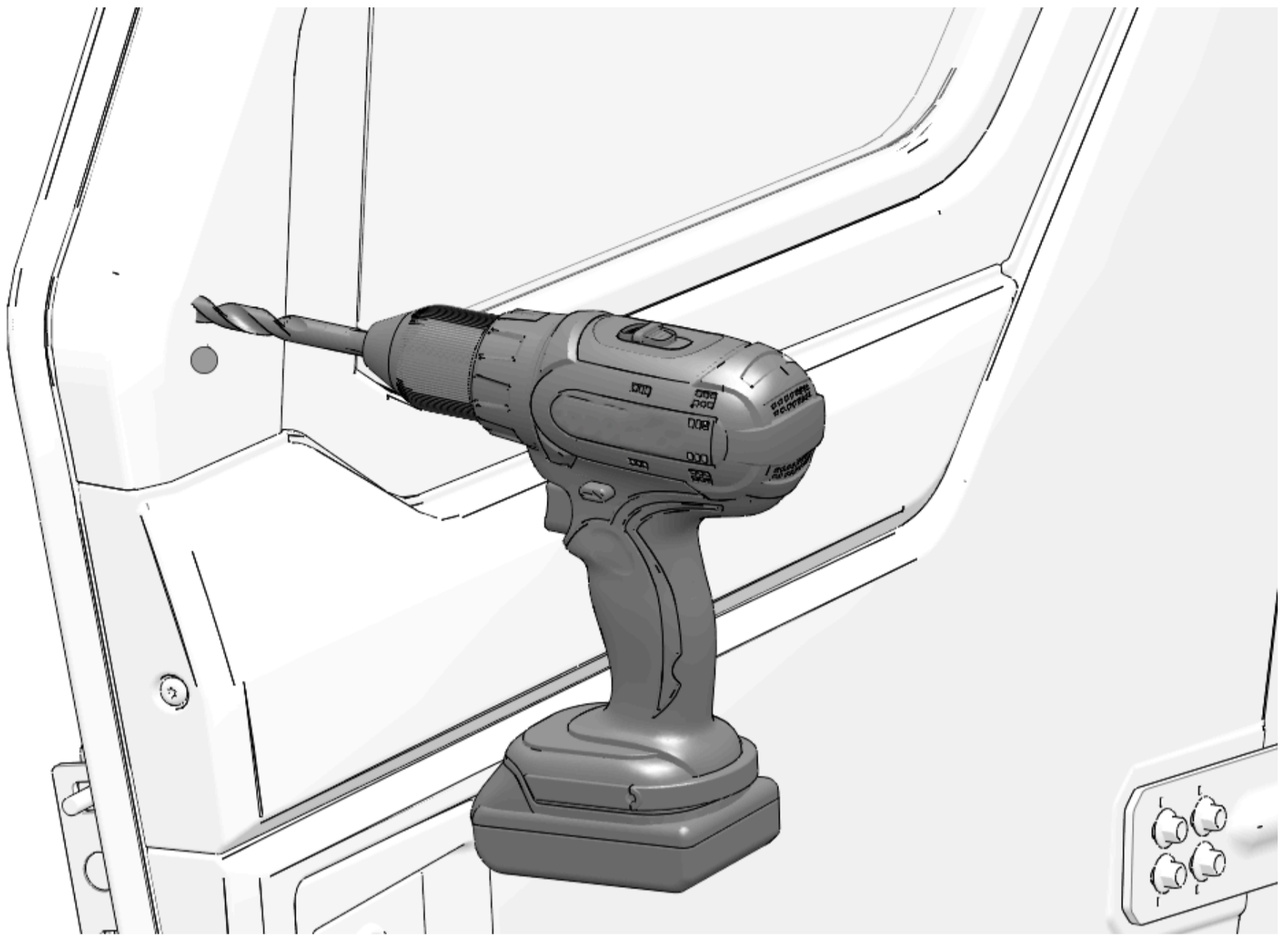
NOTICE

Do not drill straight through entire door. To prevent misalignment of spacer holes, drill each hole through one layer of plastic on the outside of door.

MEASUREMENT

Drill Bit Size:

1/2 in (13 mm)



9. Drill larger spacer hole through each pilot hole on inside of door.

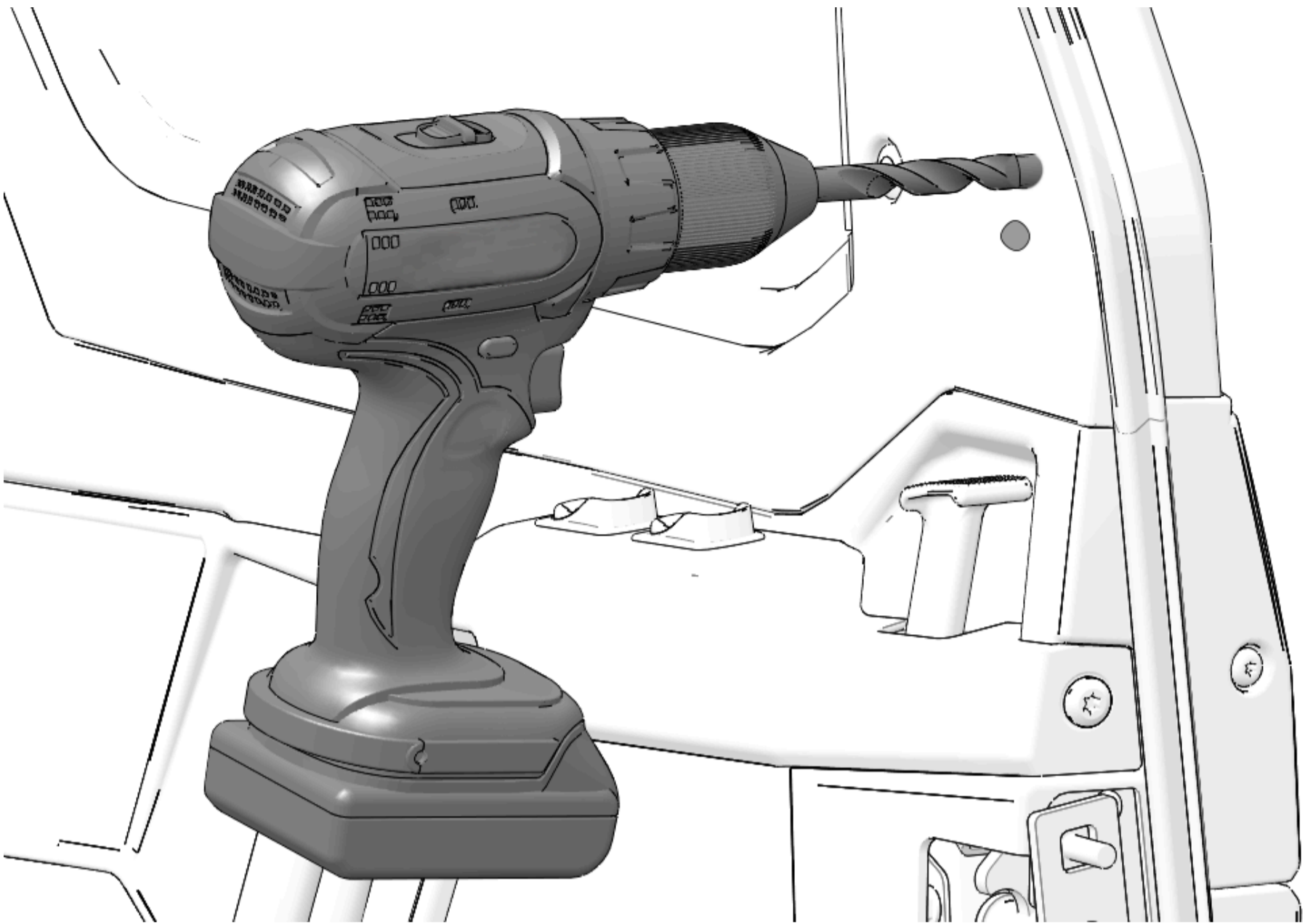
NOTICE

Do not drill straight through entire door. To prevent misalignment of spacer holes, drill each hole through one layer of plastic on the inside of door.

MEASUREMENT

Drill Bit Size:

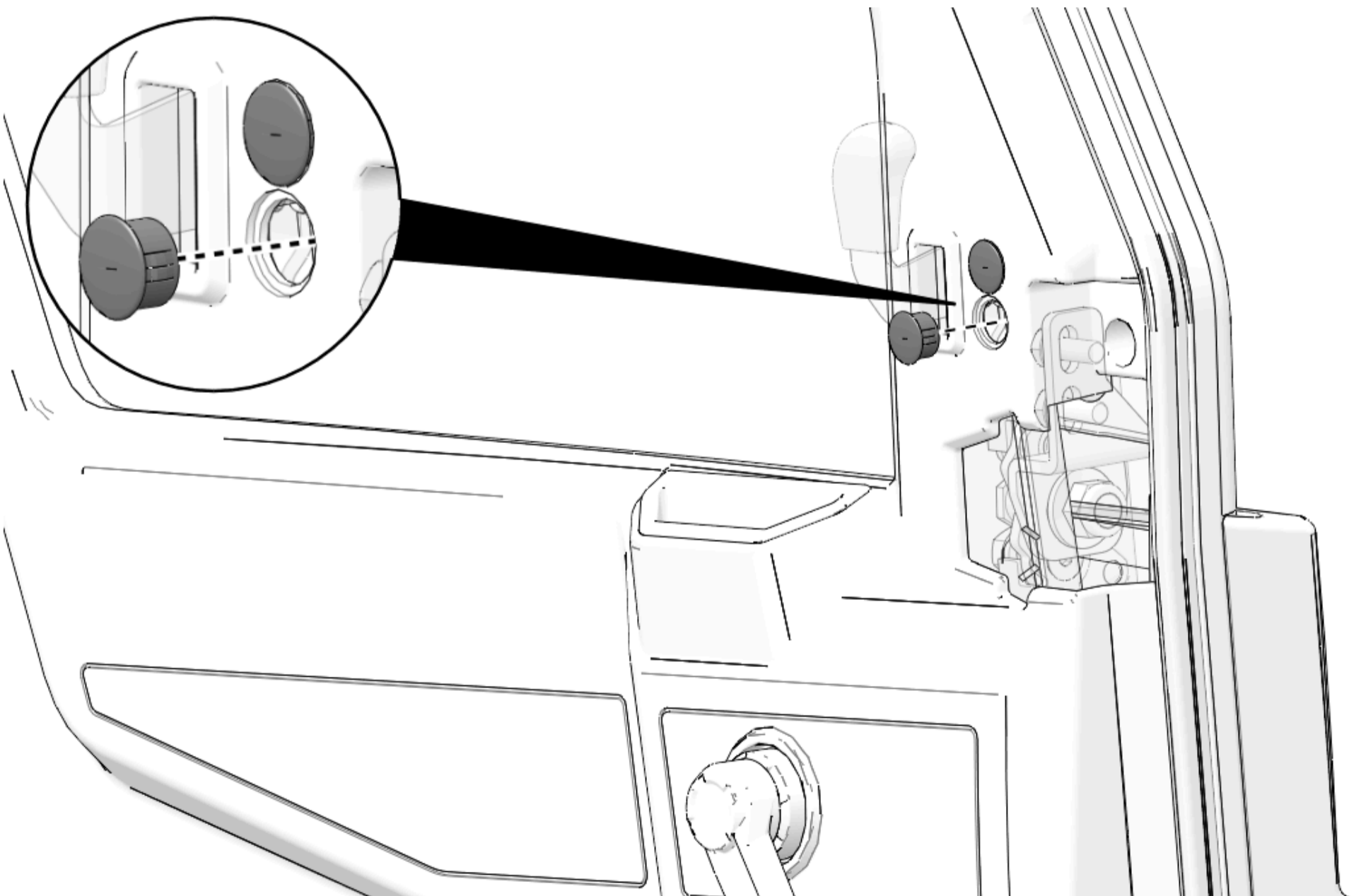
1/2 in (13 mm)



10. Repeat steps for right side front door.

Midsize Models

1. Remove and keep two caps from inside door.

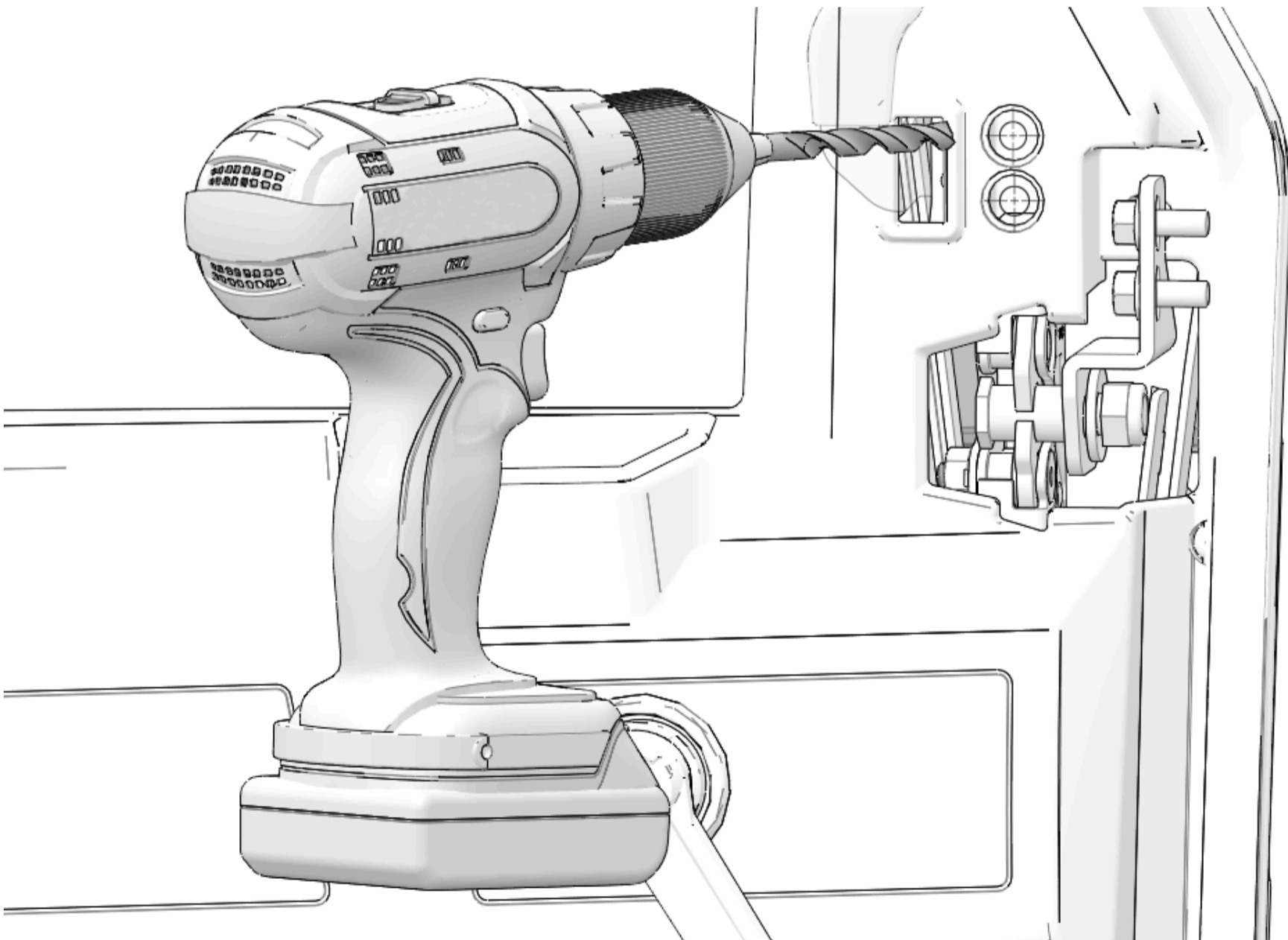
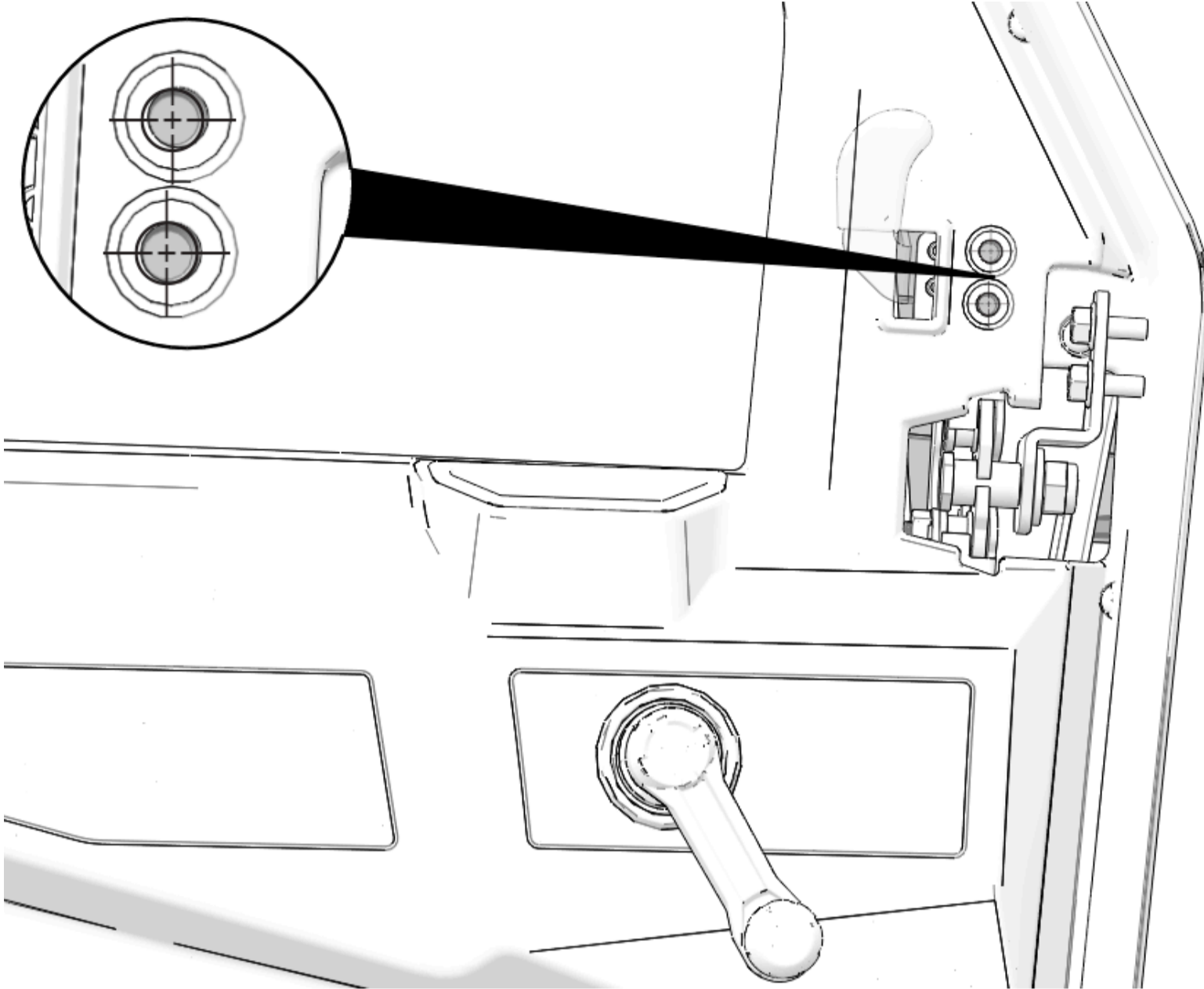


2. Drill one hole through each pre-marked indentation on the inside of the door.

MEASUREMENT

Drill Bit Size:

11/32 in (9 mm)



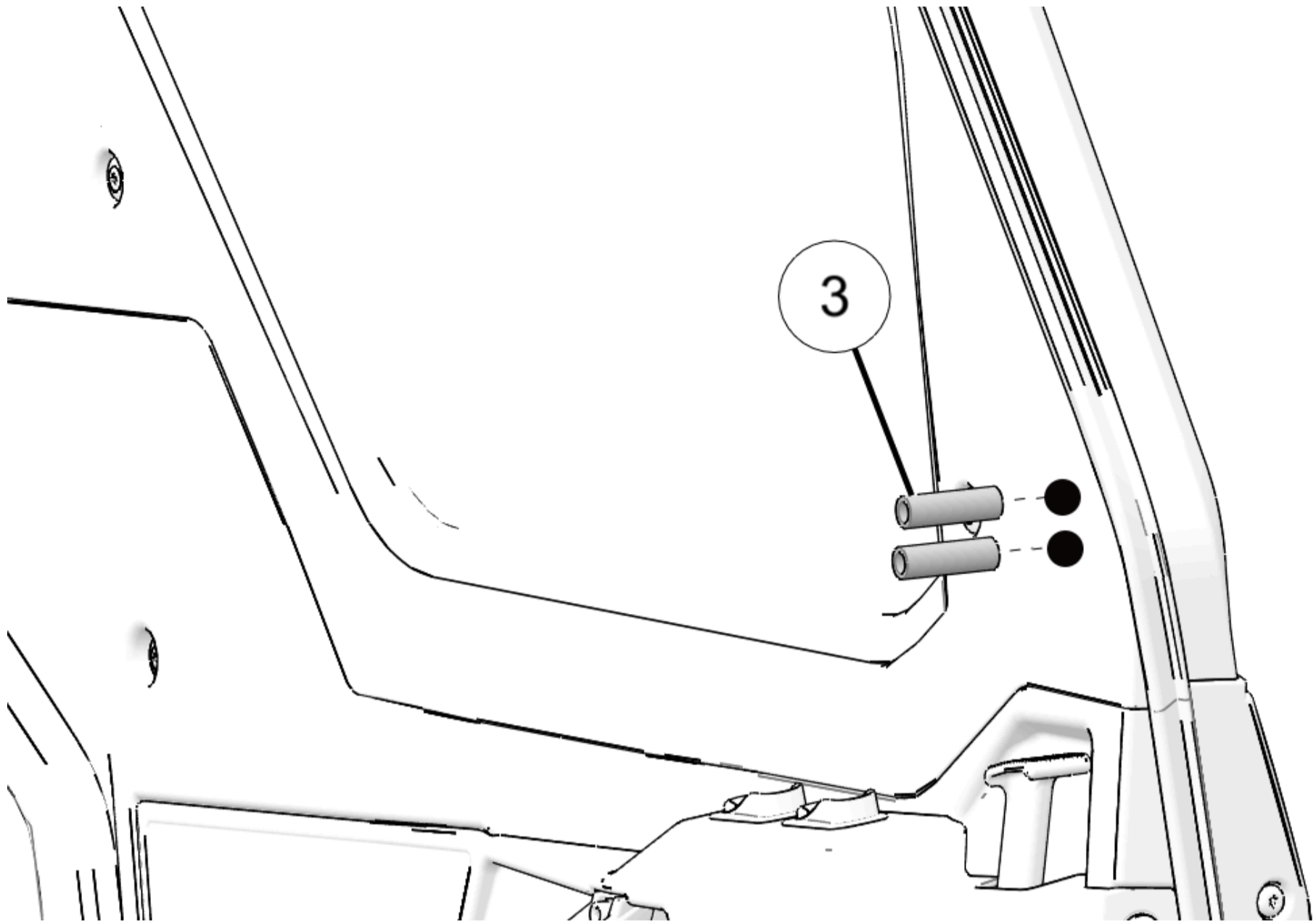
Accessory Installation

Ranger 1000 and XP 1000 Mirror Installation

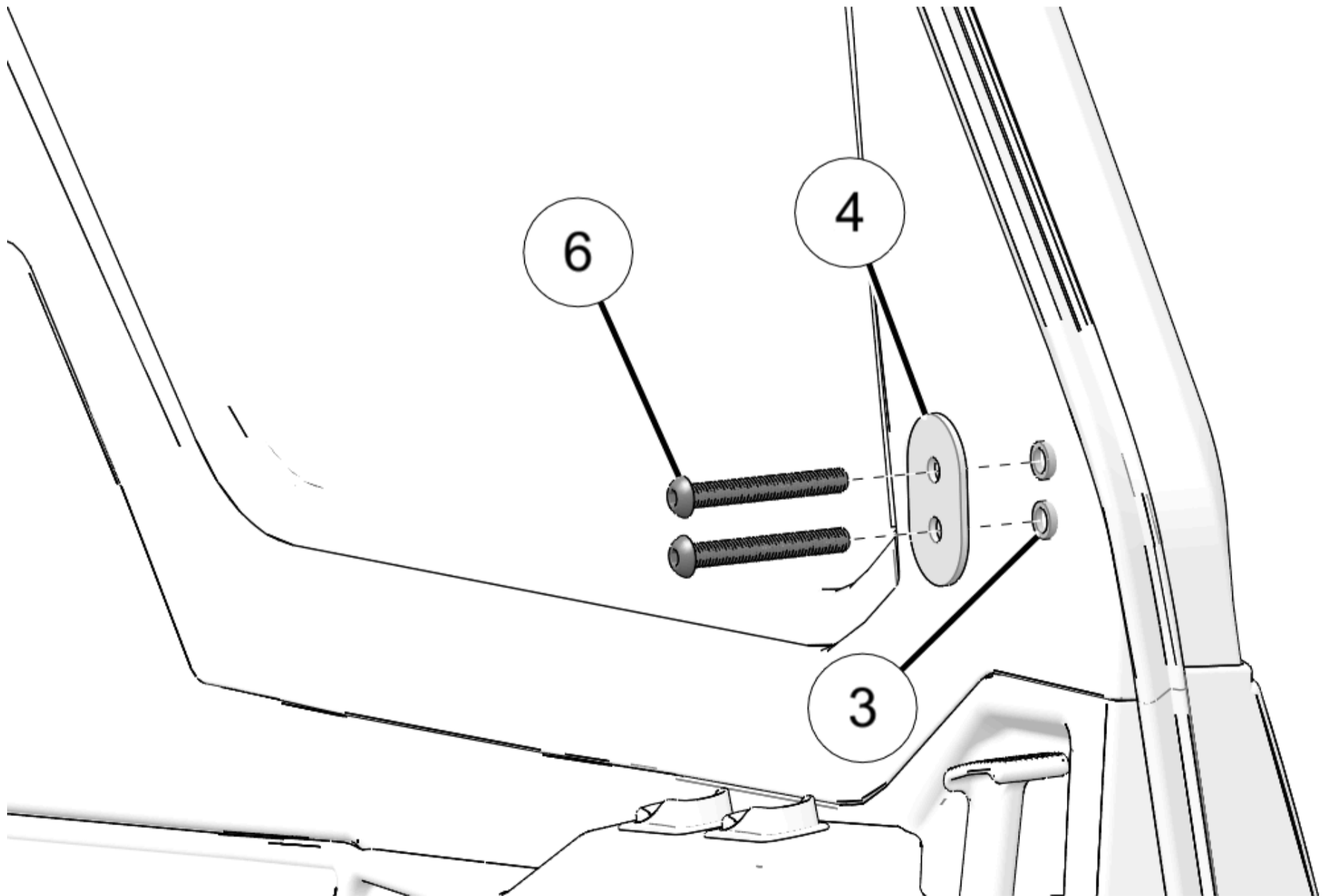
NOTICE

Left side shown; right side similar.

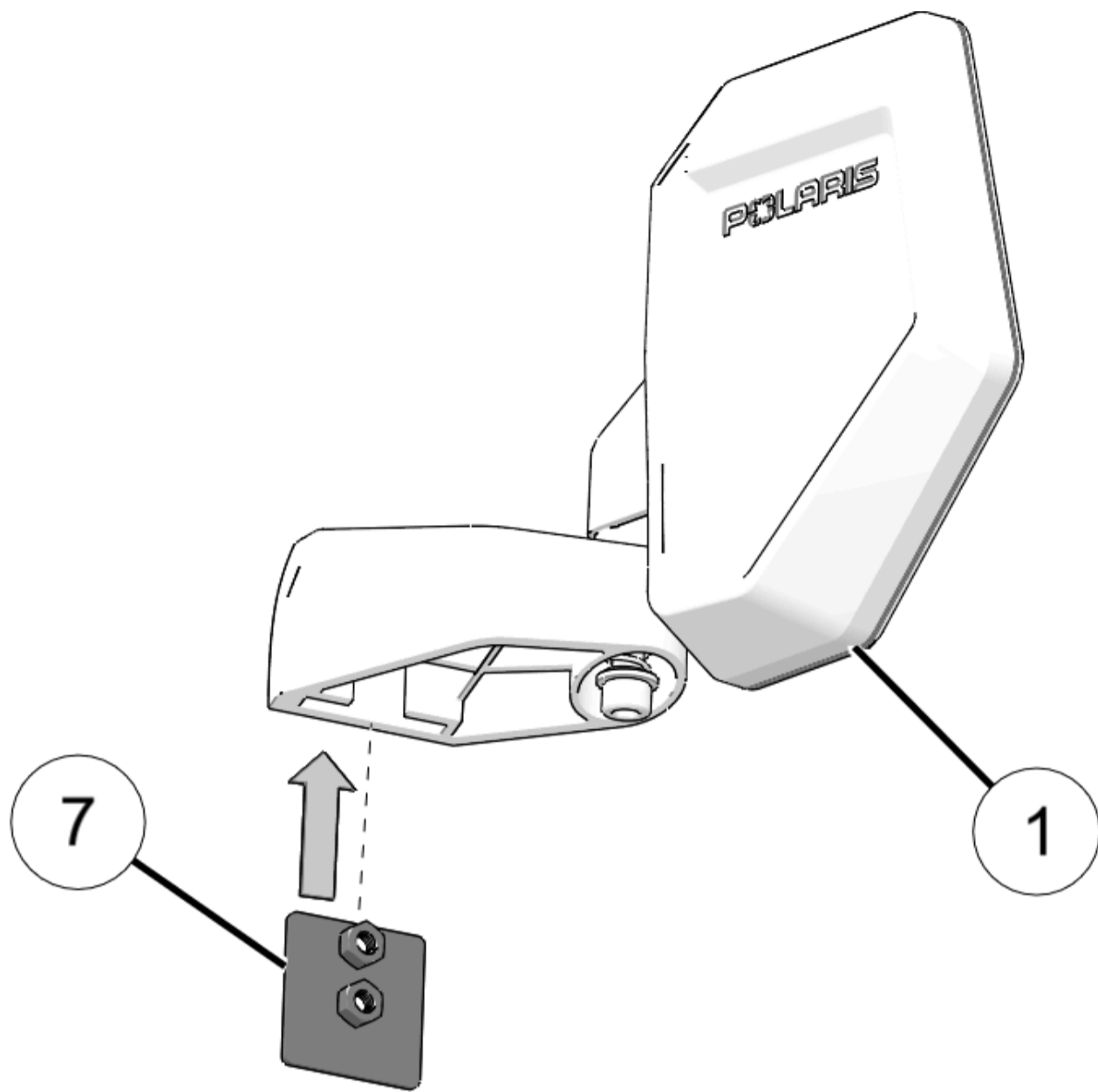
1. Install one spacer ③ into each pre-drilled hole on the door.



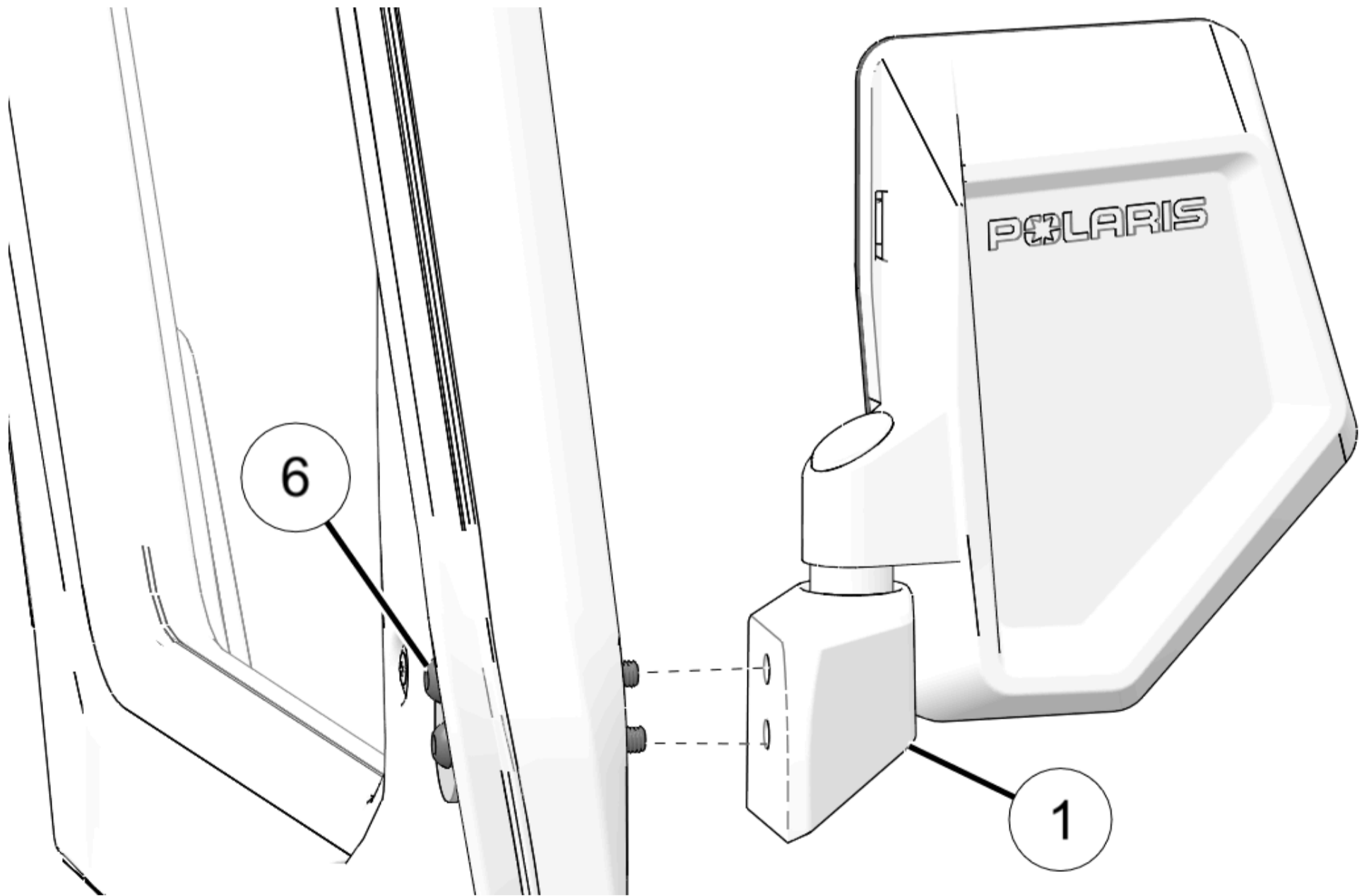
2. Install mirror backer plate ④ to the inside of the door with two screws ⑥ through two spacers ③.



3. Slide weld nut backer plate ⑦ into mirror arm ①.



4. Install the mirror assembly (1) to the door with two screws (6).



5. Torque screws to specification.

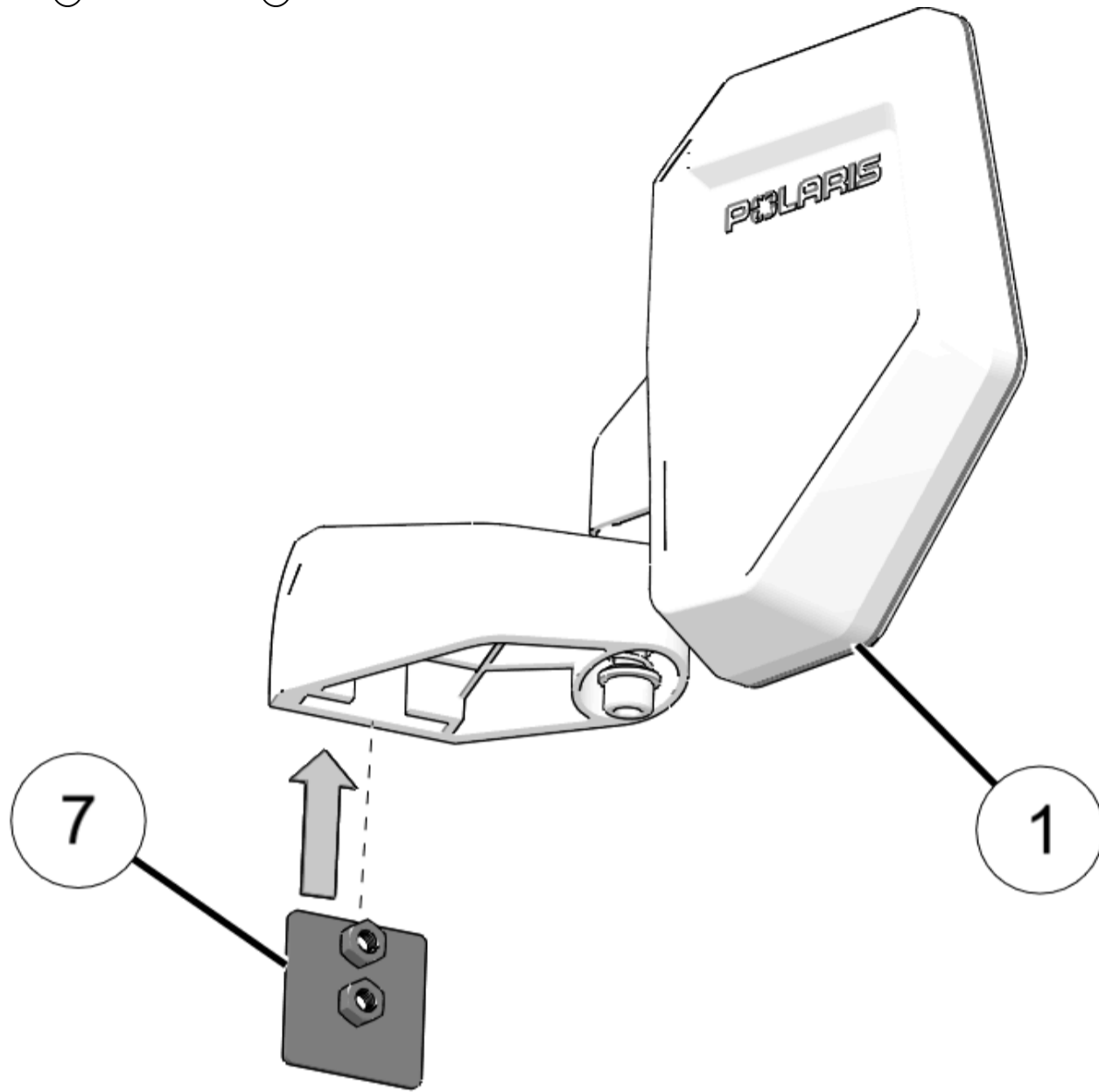
TORQUE

Mirror Screws (6):
14 ft-lbs (19 N·m)

NOTICE

Left side shown; right side similar

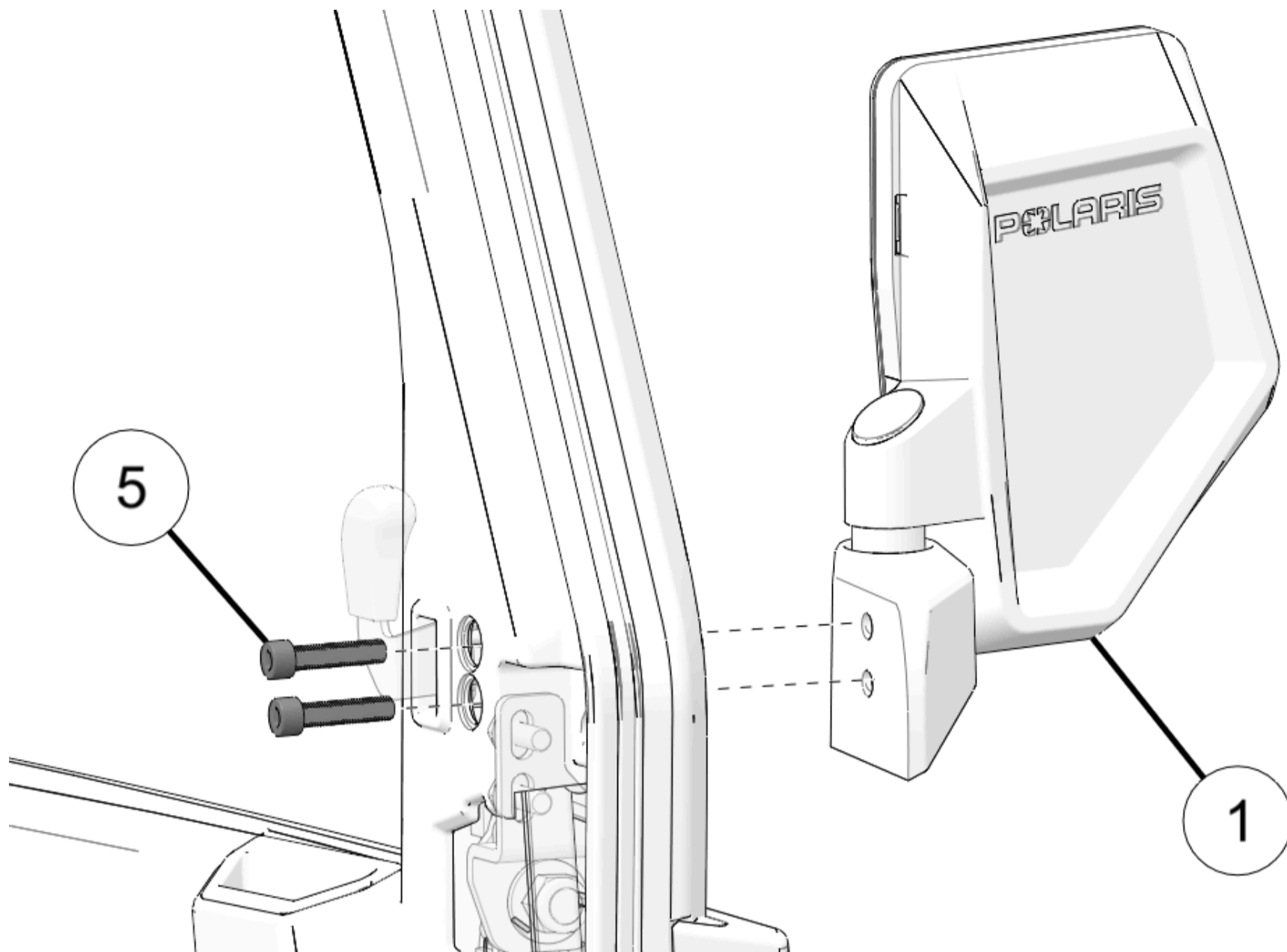
1. Slide weld nut backer plate (7) into mirror arm (1).



2. Install the mirror assembly (1) to the door with two screws (5).

NOTICE

Install both screws through the pre-drilled holes on the inside of the door.

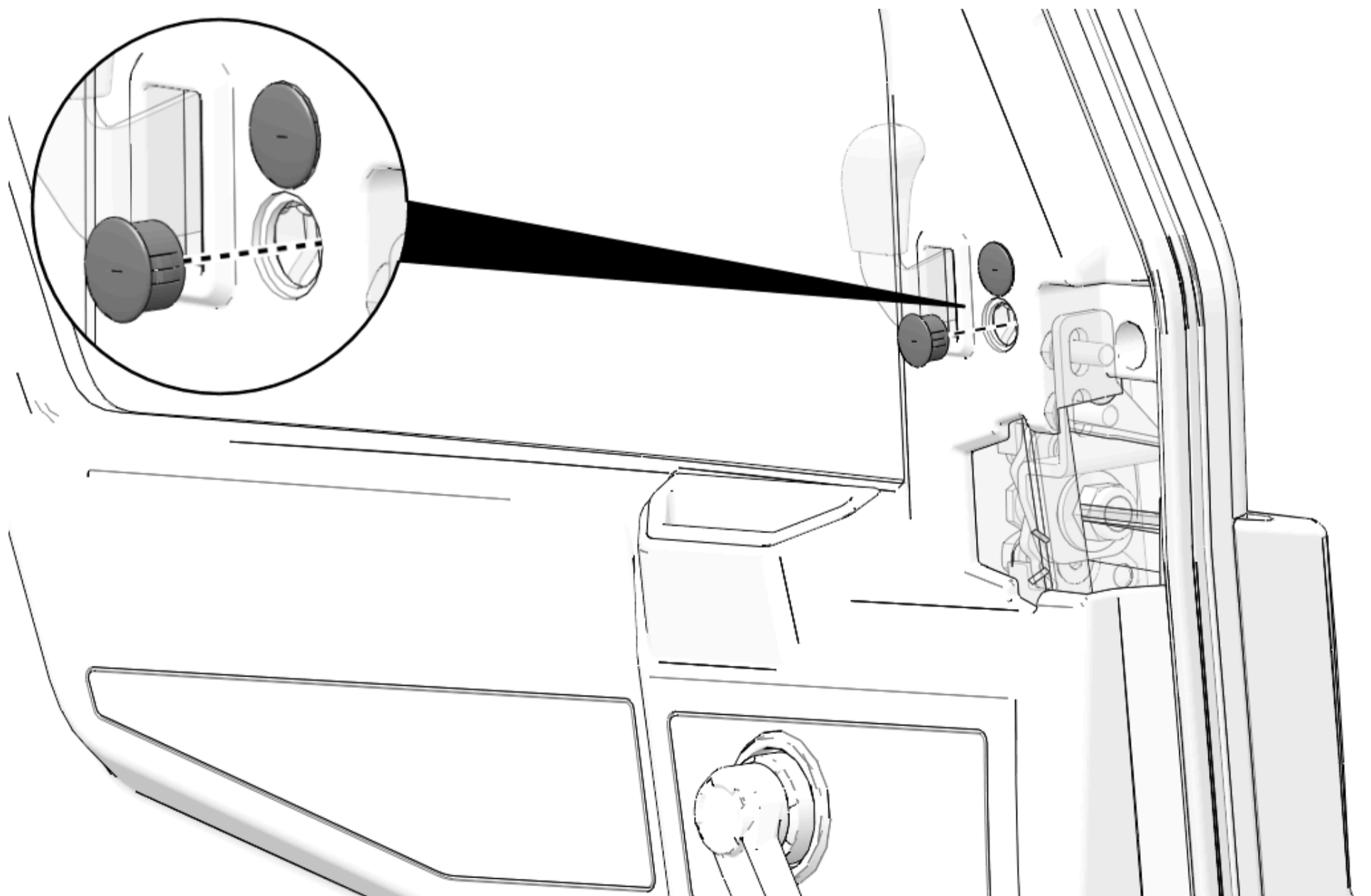


3. Torque screws to specification.

TORQUE

Mirror Screws (5):
14 ft-lbs (19 N·m)

4. Install two kept caps to the inside of the door.

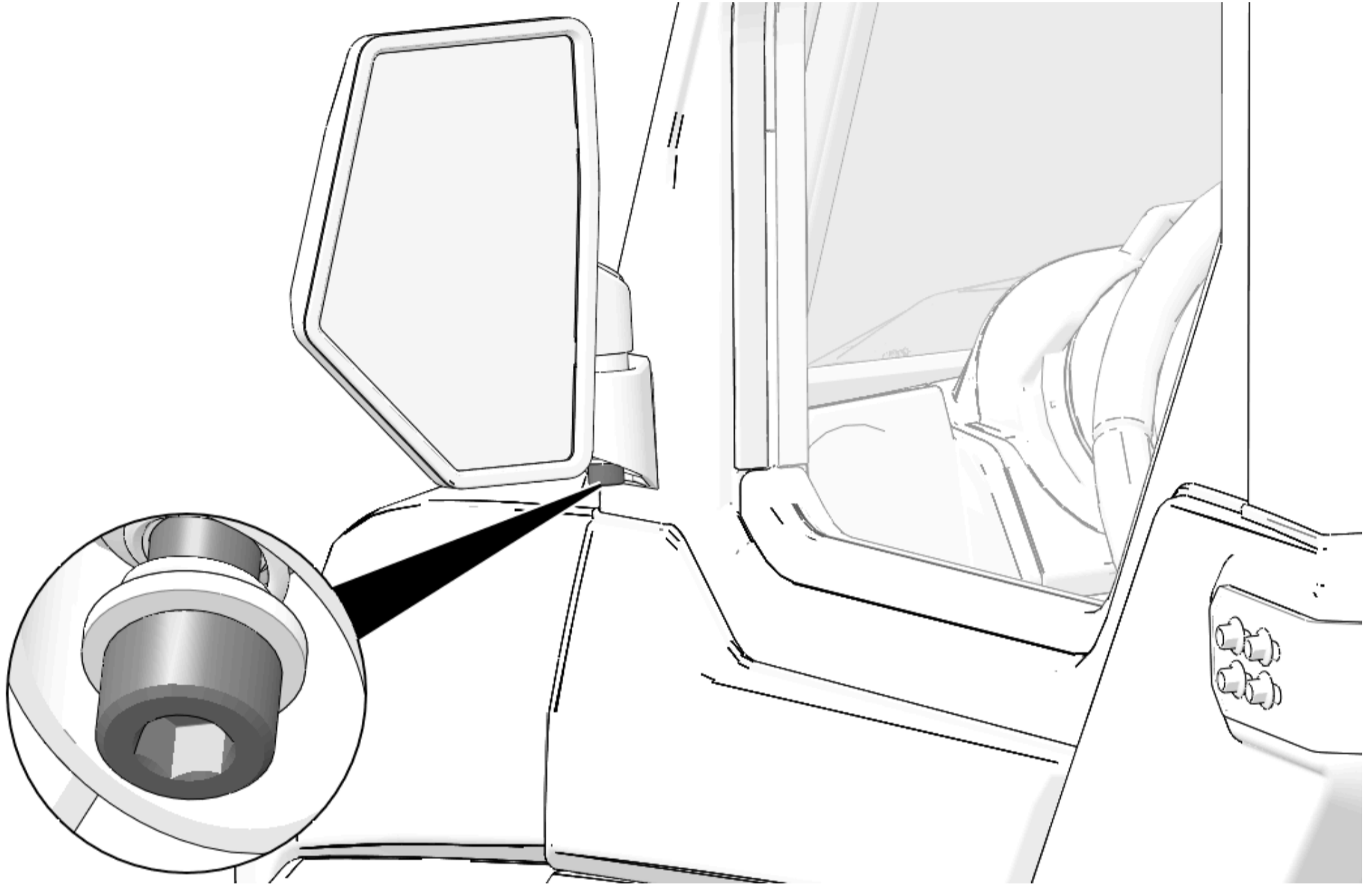


Operation

1. Adjust mirrors for best visibility.
2. Tighten pivot bolt as needed.

IMPORTANT

Mirror pivot joint is designed to give way under impact to avoid potential damage. Avoid over tightening pivot bolt when in areas or situations where mirror impacts are more likely to happen. Over tightening pivot bolts could cause damage to the side mirrors in the event of an impact.



[Site Map](#)

[Privacy Policy](#)

[Accessibility](#)

© 2025 Polaris Inc.