

Contents

Select Language ▼

Powered by  Google Translate

Canvas Door Kit

P/N 2882902; 2882903; 2891499

Missing or Damaged Parts

Before beginning assembly, inspect the kit and its component(s) to be sure all parts and tools are accounted for and not damaged. If missing parts or parts are damaged, please contact your Selling Dealer for assistance.

If your accessory was purchased online, please contact POLARIS customer service at **1-800-POLARIS** (US & Canada only).

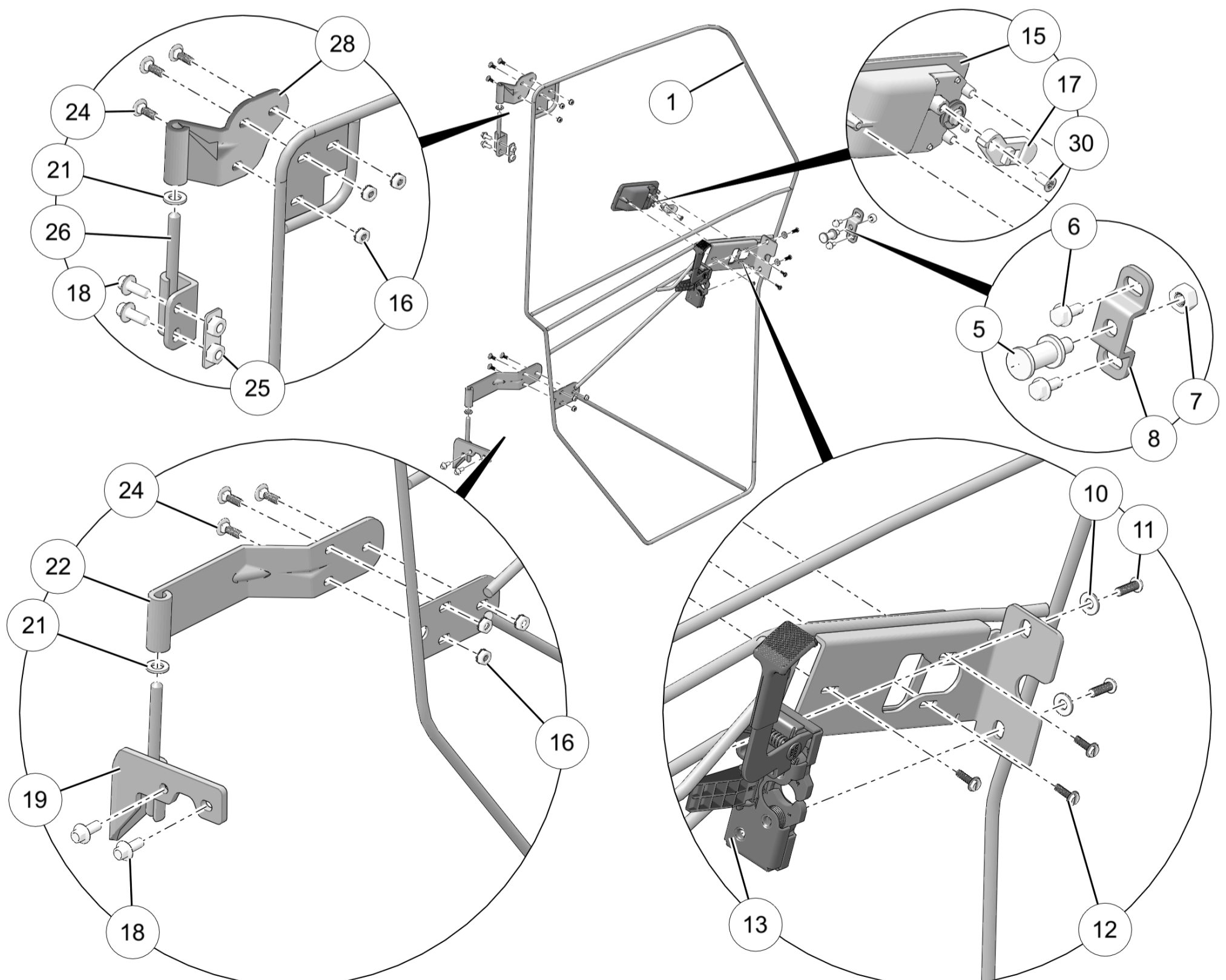
Application

Verify accessory fitment at Polaris.com.

Kit Contents

NOTICE

Left door shown; right door similar. See table for details.



Ref	Qty	Part Description	Part Number	Included in Service Kit *
1	1	Door Frame, Left	n/a	2207731
2	1	Door Frame, Right (not shown)	n/a	2207732
3	1	Door Skin, Black, Left (Kit 2882902, 2891499)(not shown)	n/a	2207729, 2212558
	1	Door Skin, Camo, Left (Kit 2882903)(not shown)	n/a	2207737
4	1	Door Skin, Black, Right (Kit 2882902, 2891499)(not shown)	n/a	2207730, 2212559
	1	Door Skin, Camo, Right (Kit 2882903)(not shown)	n/a	2207738
5	2	Pin, Striker	n/a	2207733, 2207734
6	4	Screw, Hex Flange, (M8 x 1.25 x 20 mm)(gold color)	n/a	2207733, 2207734
7	2	Nut, Hex, (M12 x 1.75 mm)	n/a	2207733, 2207734
8	2	Bracket, Striker	n/a	2207733, 2207734
9	2	Shim, Striker Bracket (not shown)	n/a	2207733, 2207734
10	4	Washer, Flat - M6	n/a	2207733, 2207734
11	4	Screw, Socket Button Head, (M6 x 20 mm)	n/a	2207733, 2207734
12	6	Screw, Hex, Serrated Flange, (10–32 mm) x 5/8 in	n/a	2207733, 2207734
13	1	Latch, Interior, Left	n/a	2207733
14	1	Latch, Interior, Right (not shown)	n/a	2207734
15	2	Latch, Exterior (Left and Right)	n/a	2207733, 2207734
16	12	Nut, External Tooth Lock Washer, 1/4 in - (20 mm)	n/a	2207736
17	2	Lever, Exterior Latch	n/a	2207733, 2207734
18	8	Screw, Hex Flange, (M8 x 1.25 x 20 mm)(black color)	7517838	2207735
19	1	Hinge, Chassis Side, Lower Left	n/a	2207735
20	1	Hinge, Chassis Side, Lower RH (not shown)	n/a	2207735
21	4	Washer, Nylon, (10.25 x 19.0 x 2.0 mm)	5439712	-
22	1	Hinge, Door Side, Lower Left	n/a	2207736
23	1	Hinge, Door Side, Lower RH (not shown)	n/a	2207736
24	12	Bolt, Carriage, 1/4–20 x 3/4 in	n/a	2207736
25	2	Nut Plate, Upper Chassis Side Hinge	5256140	2207735
26	1	Hinge, Chassis Side, Upper Left	n/a	2207735
27	1	Hinge, Chassis Side, Upper Right (not shown)	n/a	2207735
28	1	Hinge, Door Side, Upper Left	n/a	2207736
29	1	Hinge, Door Side, Upper Right (not shown)	n/a	2207736
30	2	Screw, Phillips Countersunk - 1/4–20 x 1/2	n/a	2207733, 2207734

* Service kits contain parts and hardware required for ONE side of vehicle.

Tools Required

- Safety Glasses
- Screwdriver Set, Torx®
- Socket Set, Metric
- Torque Wrench
- Wrench Set, Metric

Consumables Required

- Gloves, Chemical Resistant

- Grease, Polaris All Season (or equivalent)

Important

Your Canvas Door Kit is exclusively designed for your vehicle. Please read the installation instructions thoroughly before beginning. Installation is easier if the vehicle is clean and free of debris. For your safety, and to ensure a satisfactory installation, perform all installation steps correctly in the sequence shown.

Installation Instructions

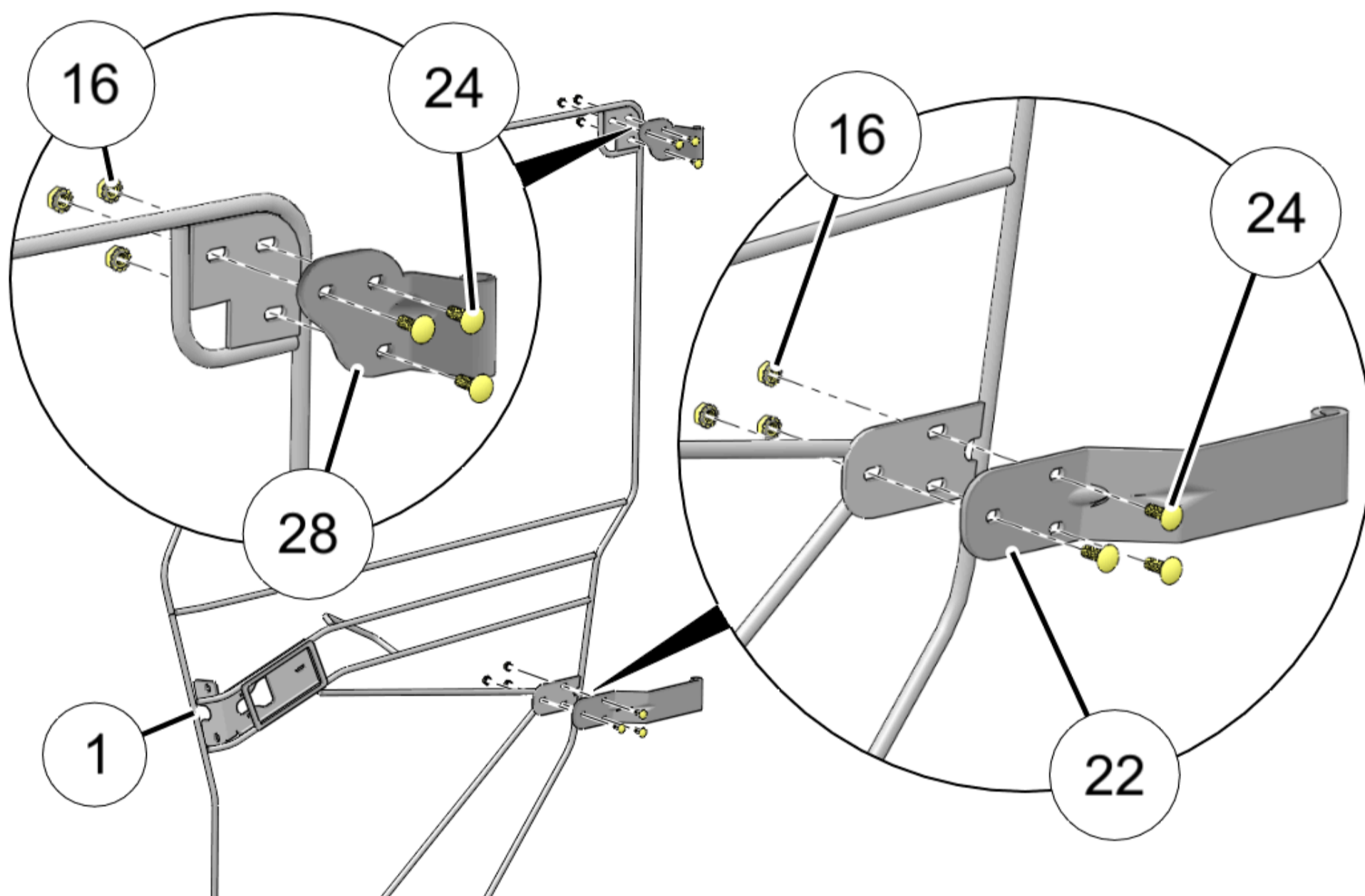
NOTICE

Polaris recommends two people assemble and install this kit.

1. Shift vehicle transmission into "PARK". Turn ignition switch to "OFF" position and remove key from switch.
2. Open vehicle bed.
3. Loosely install upper left door side hinge (28) to left door frame (1) using three each carriage bolts (24) and nuts (16).

NOTICE

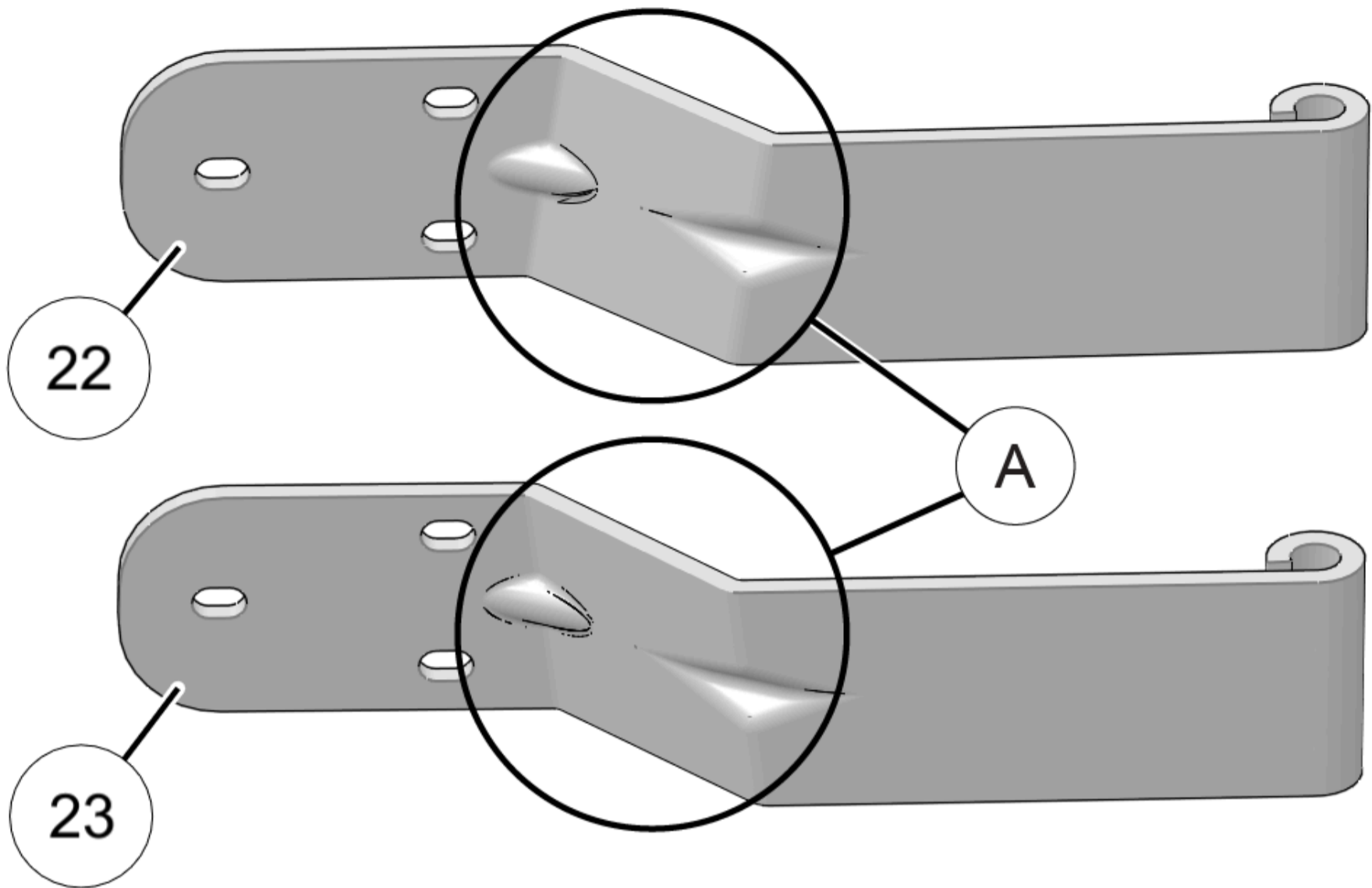
Skin not shown for clarity.



4. Loosely install lower left door side hinge (22) to left door frame (1) using three each carriage bolts (24) and nuts (16).

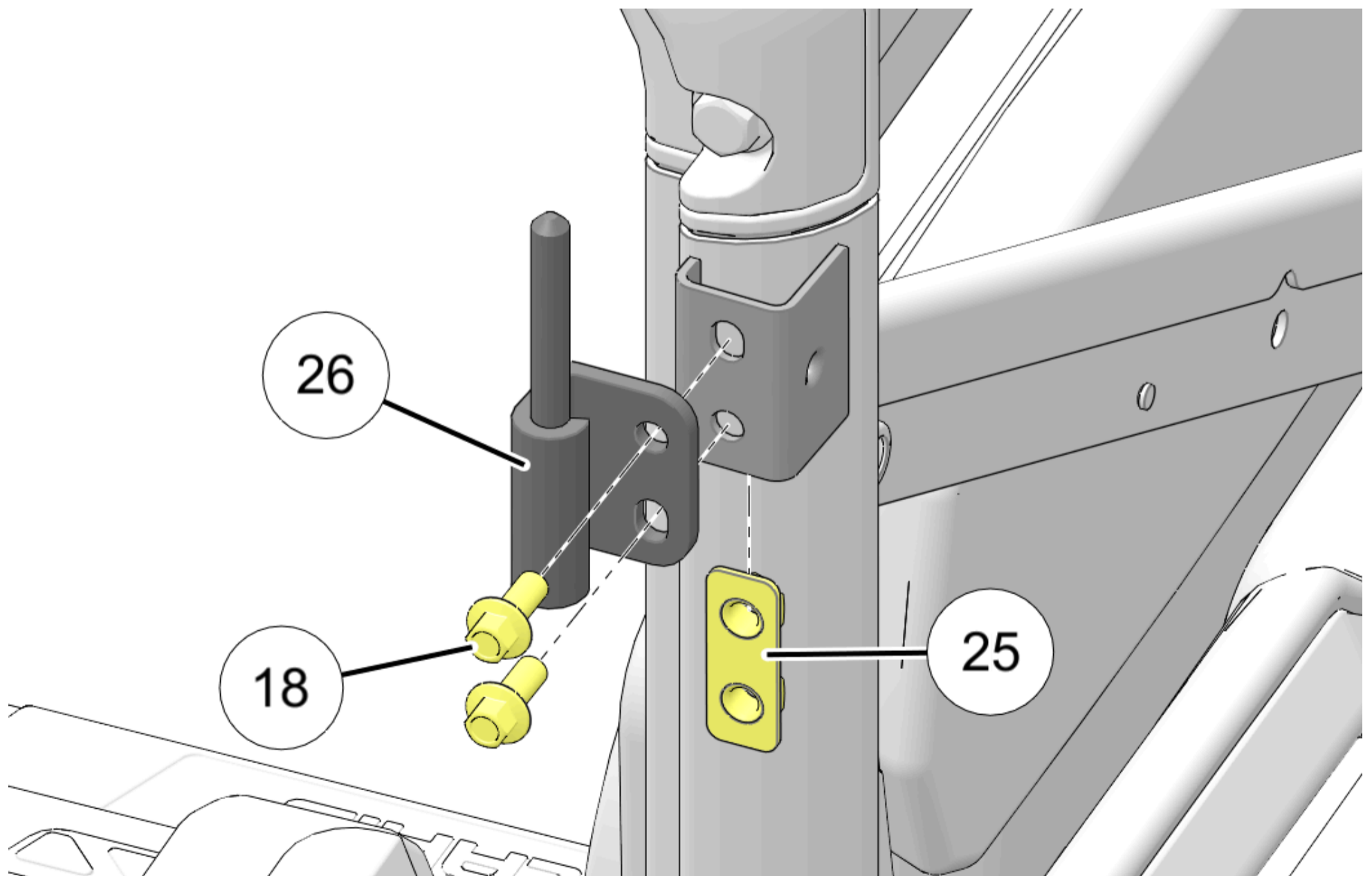
NOTICE

Left hinge (22) is very similar to right hinge (23); angle of joggle (A) can be used to differentiate hinges.



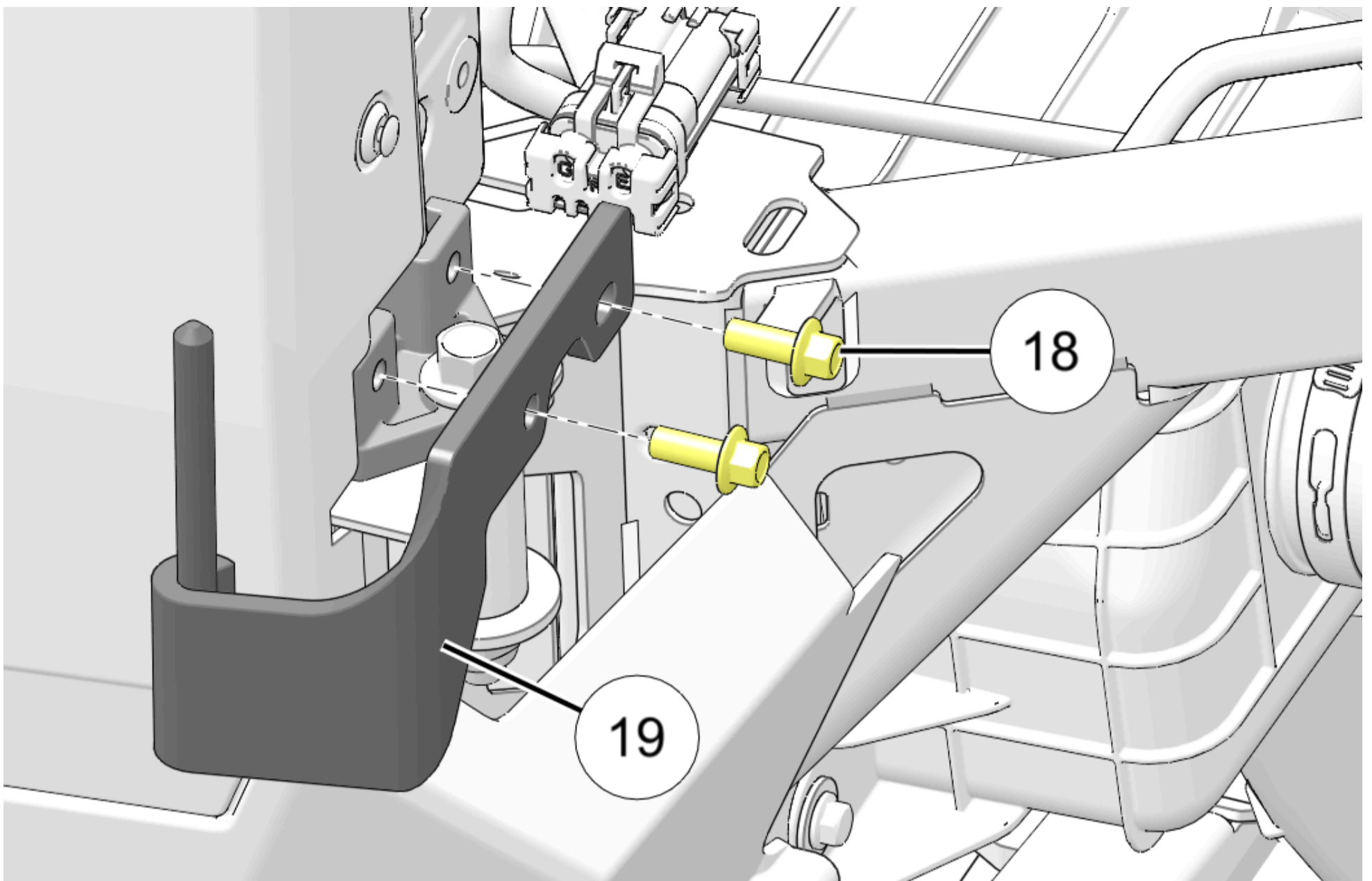
5. Install upper left hinge (26) to ROPS bracket using two screws (18) and nut plate (25). Center hinge over screw holes in vehicle, then partially tighten screws.

DO NOT torque fasteners at this time.



6. Install lower left hinge (19) to chassis using two each screws (18). Center hinge over screw holes in vehicle, then partially tighten screws.

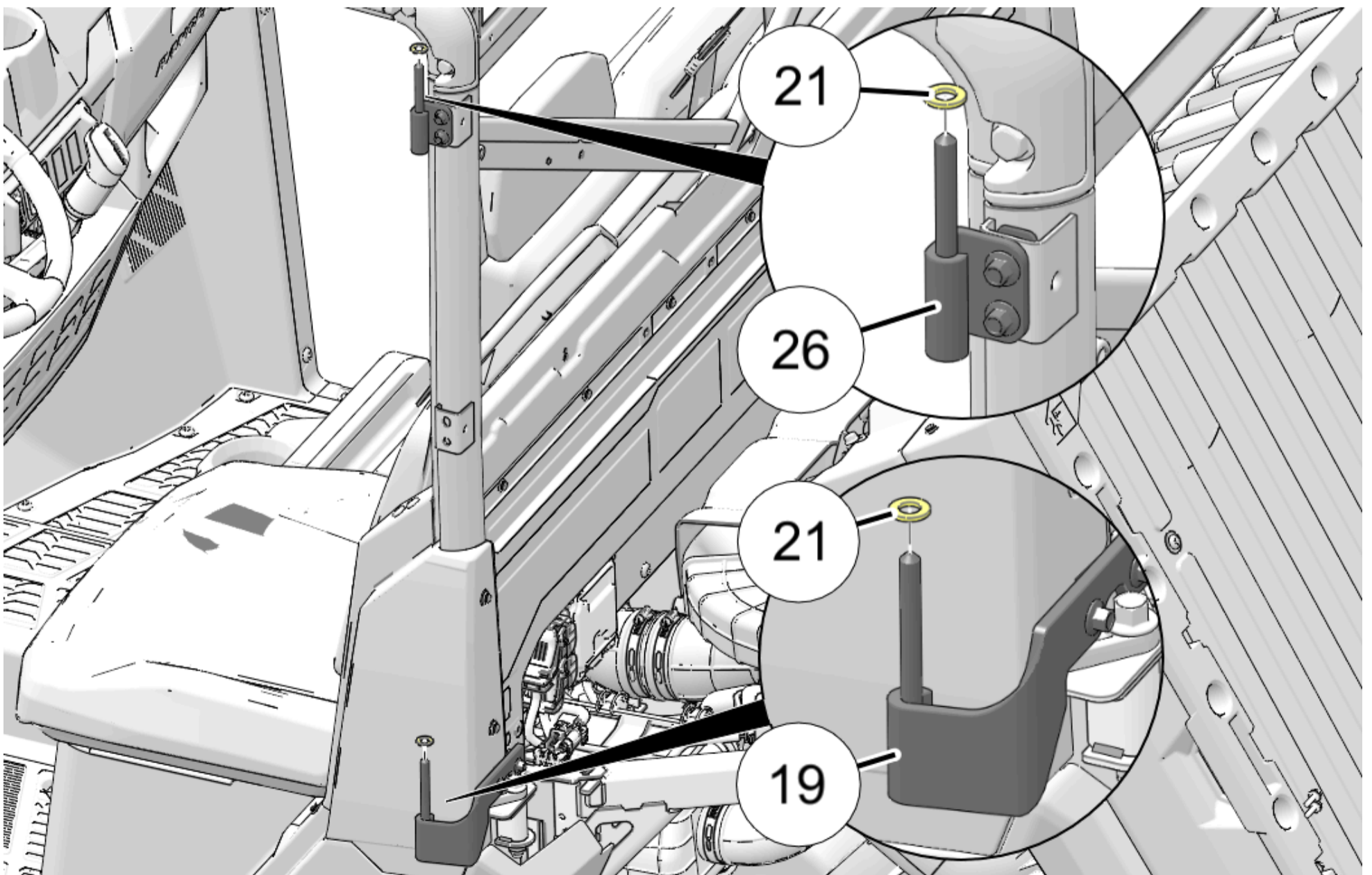
DO NOT torque fasteners at this time.



7. Install nylon washer (21) to pins on upper and lower hinges (26) and (19).

NOTICE

Washer acts as bearing surface to assist in smooth door operation.



⚠ WARNING

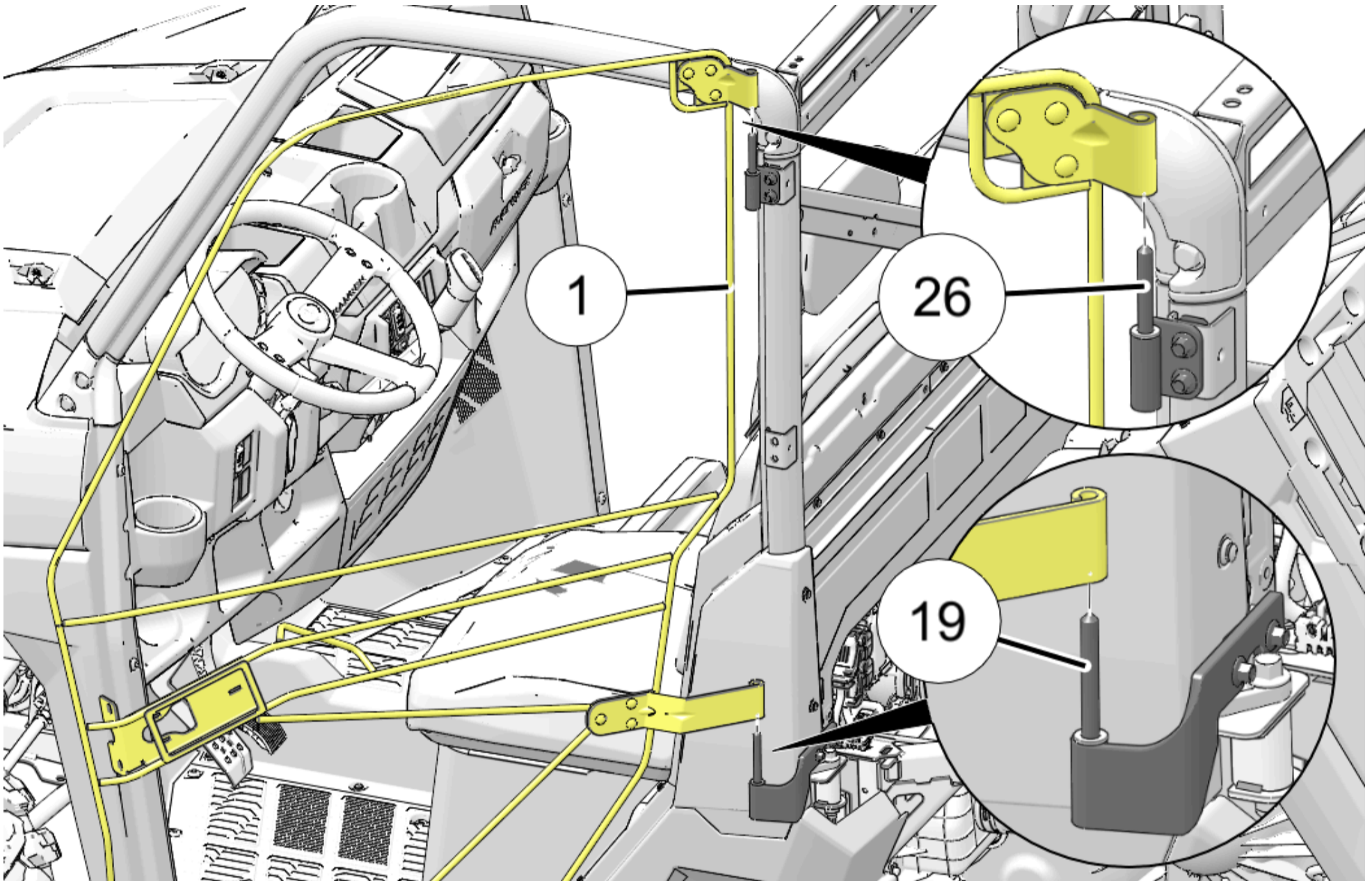
Follow all chemical manufacturer instructions and safety precautions. Failure to follow all manufacturer instructions and precautions may

result in severe injury or death.

- Grease pins on upper and lower hinges (26) and (19) using Polaris All Season Grease (or equivalent).
- Install door assembly (1) on lower hinge (19) first, then upper hinge (26).

NOTICE

Lower hinge pin is longer than upper hinge pin to assist in door installation.



- Close door, pushing into ROPS, and observe gap between door frame (1) and ROPS/chassis structure (around entire perimeter of door):

- IF PERIMETER GAP IS EVEN:** Ensure no hinge gap (A) exists between bottom of DOOR side hinges (28) and (22), and nylon washers (21) on corresponding CHASSIS side hinges (26) and (19) (to equalize door loading on hinges). If necessary, adjust height of upper chassis side hinge (26) to eliminate hinge gap.

When complete, tighten all six door side hinge nuts (16).

TIP

Have one person hold and center the door, and a second person tighten the fasteners.

- IF PERIMETER GAP IS UNEVEN:** Loosen all four CHASSIS side hinge screws (18), center door in ROPS, then re-tighten chassis side hinge screws. When complete, go to previous section, **IF PERIMETER GAP IS EVEN**.

NOTICE

If necessary for height adjustment, remove one or both nylon washers (21).

- Torque all hinge fasteners to specification.

TORQUE

Screws (18):

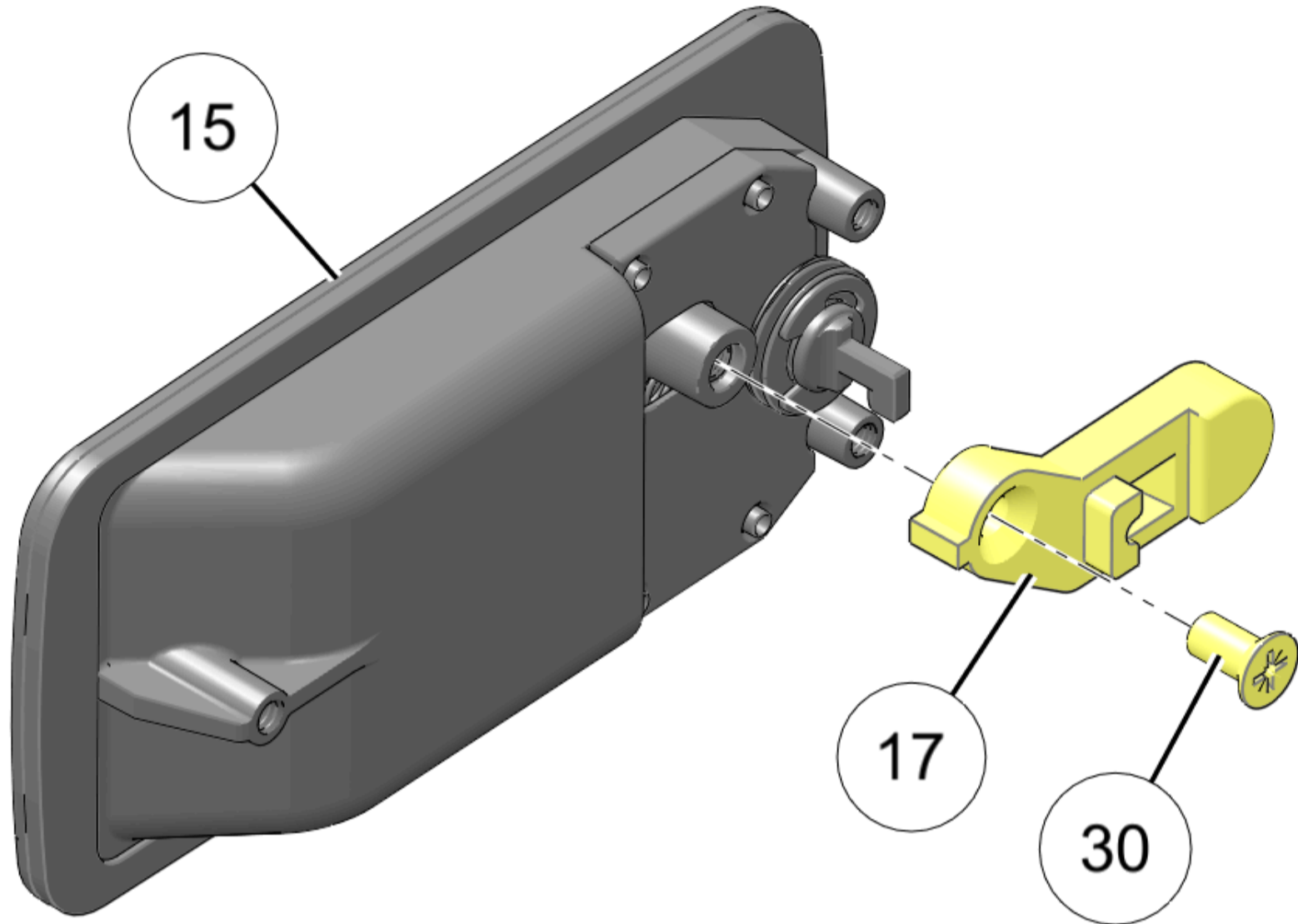
17 ft-lbs (23 N·m)

TORQUE

Nuts (16):

5 ft-lbs (7 N·m)

12. Assemble lever (17) to exterior latch (15) using screw (30).

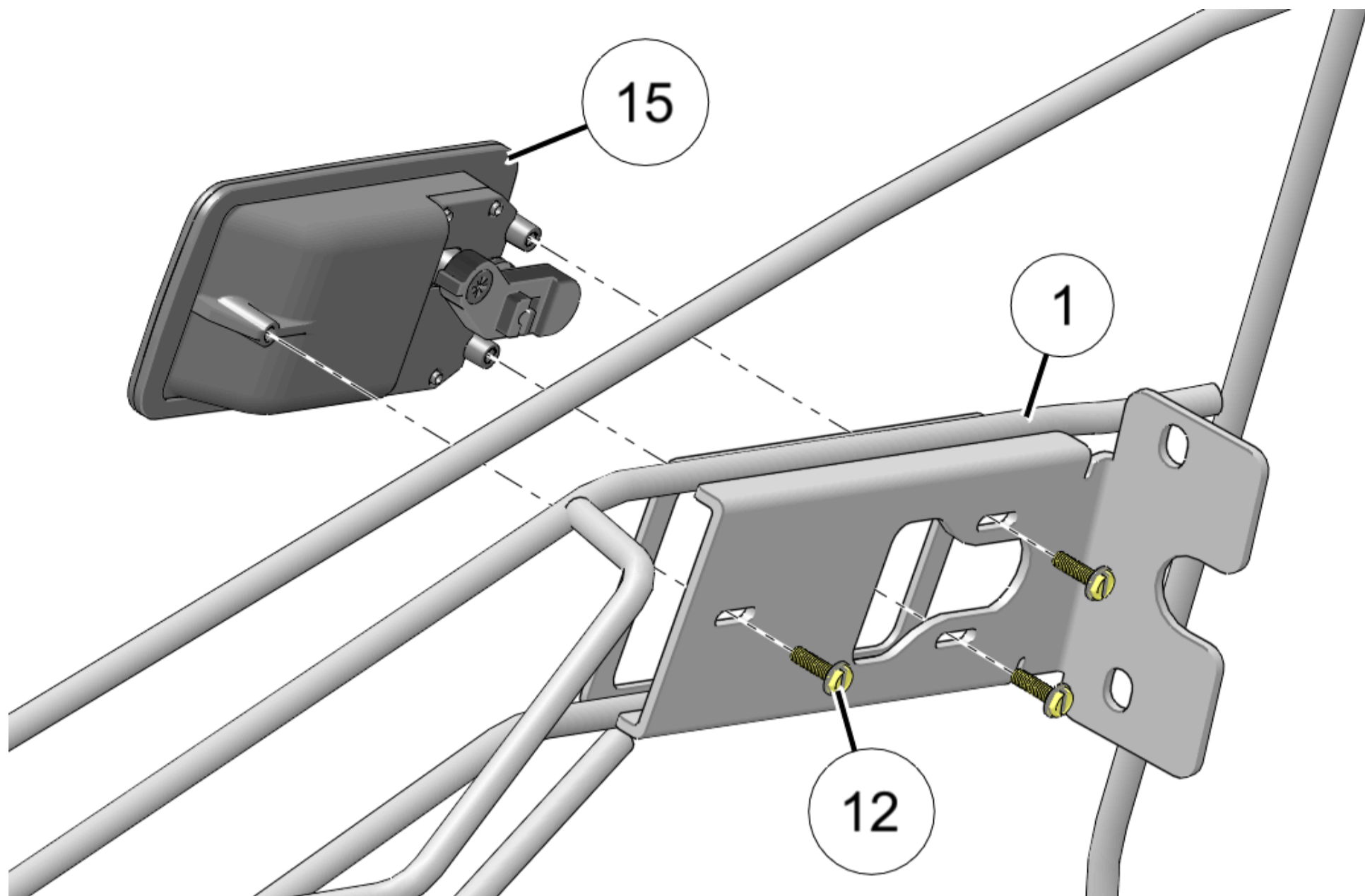


13. Install exterior latch (15) to left door frame (1) using three screws (12). Center latch in slotted holes, then partially tighten screws.

DO NOT torque fasteners at this time.

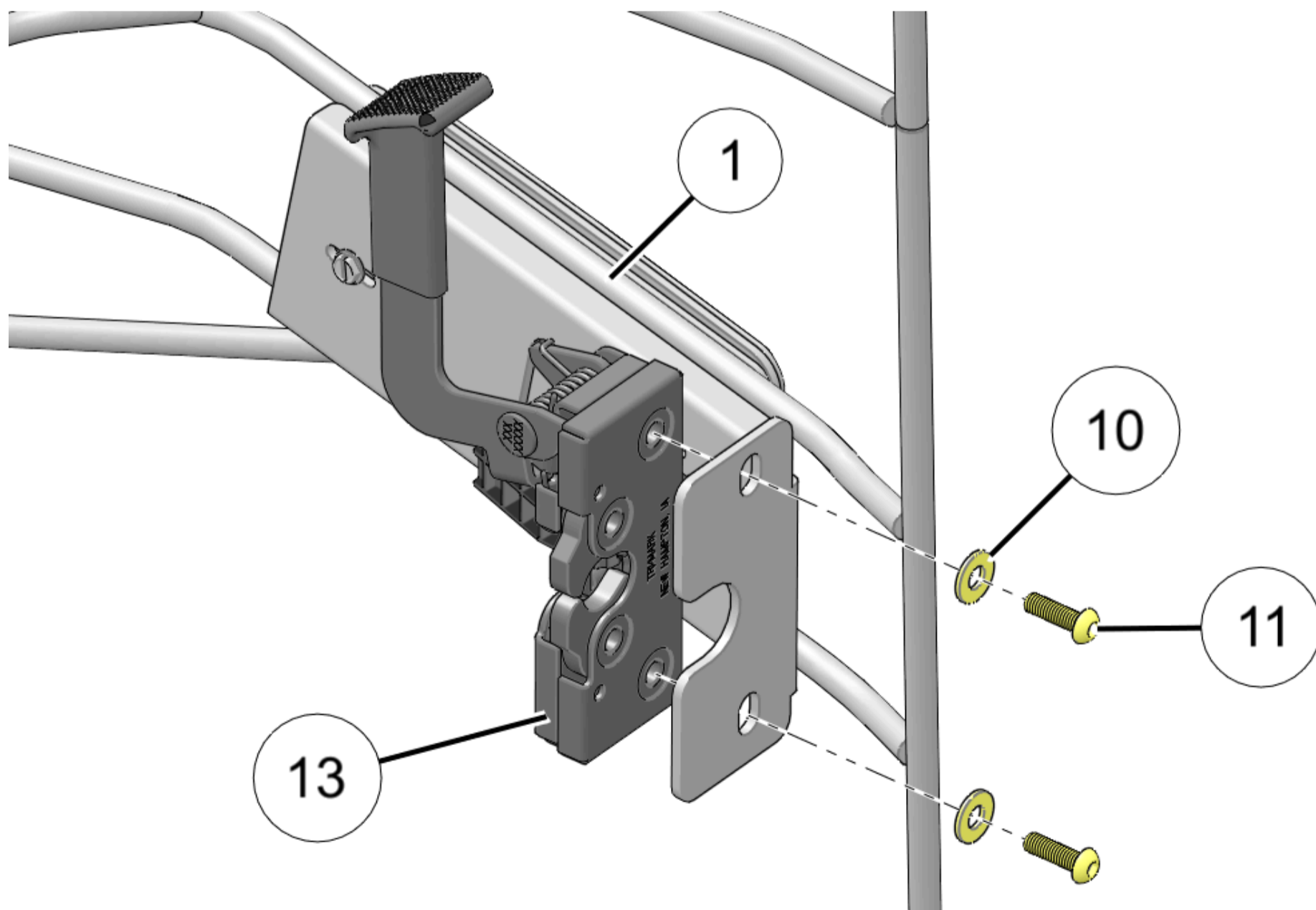
NOTICE

If canvas has not been cut for exterior latch installation, use screw holes and latch opening in frame to mark where to cut canvas. Make a small slit in canvas for each screw and a large X in canvas for exterior latch.



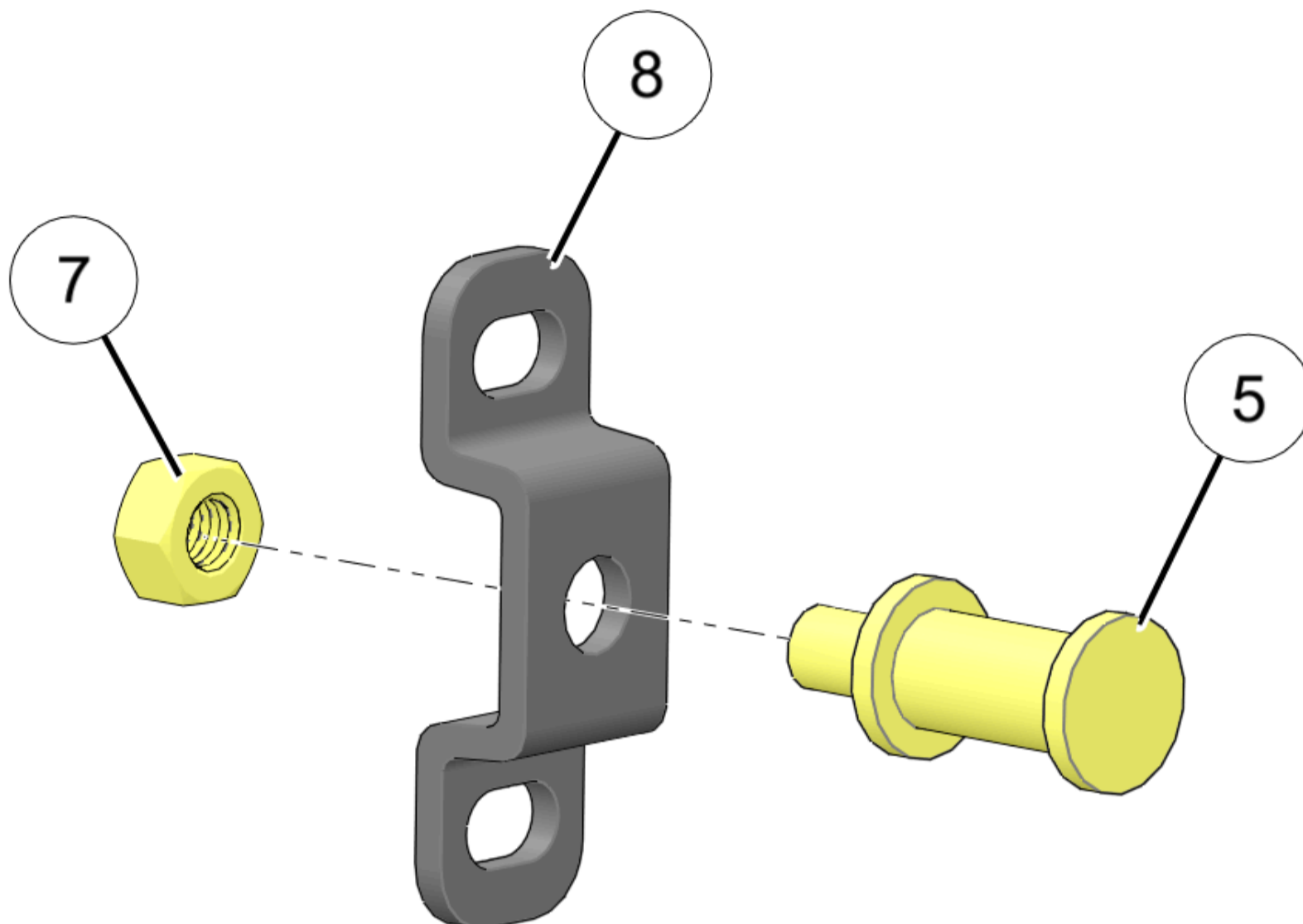
14. Install left interior latch (13) to left door frame (1) using two each screws (11) and washers (10). Center latch in slotted holes, then partially tighten screws.

DO NOT torque fasteners at this time.



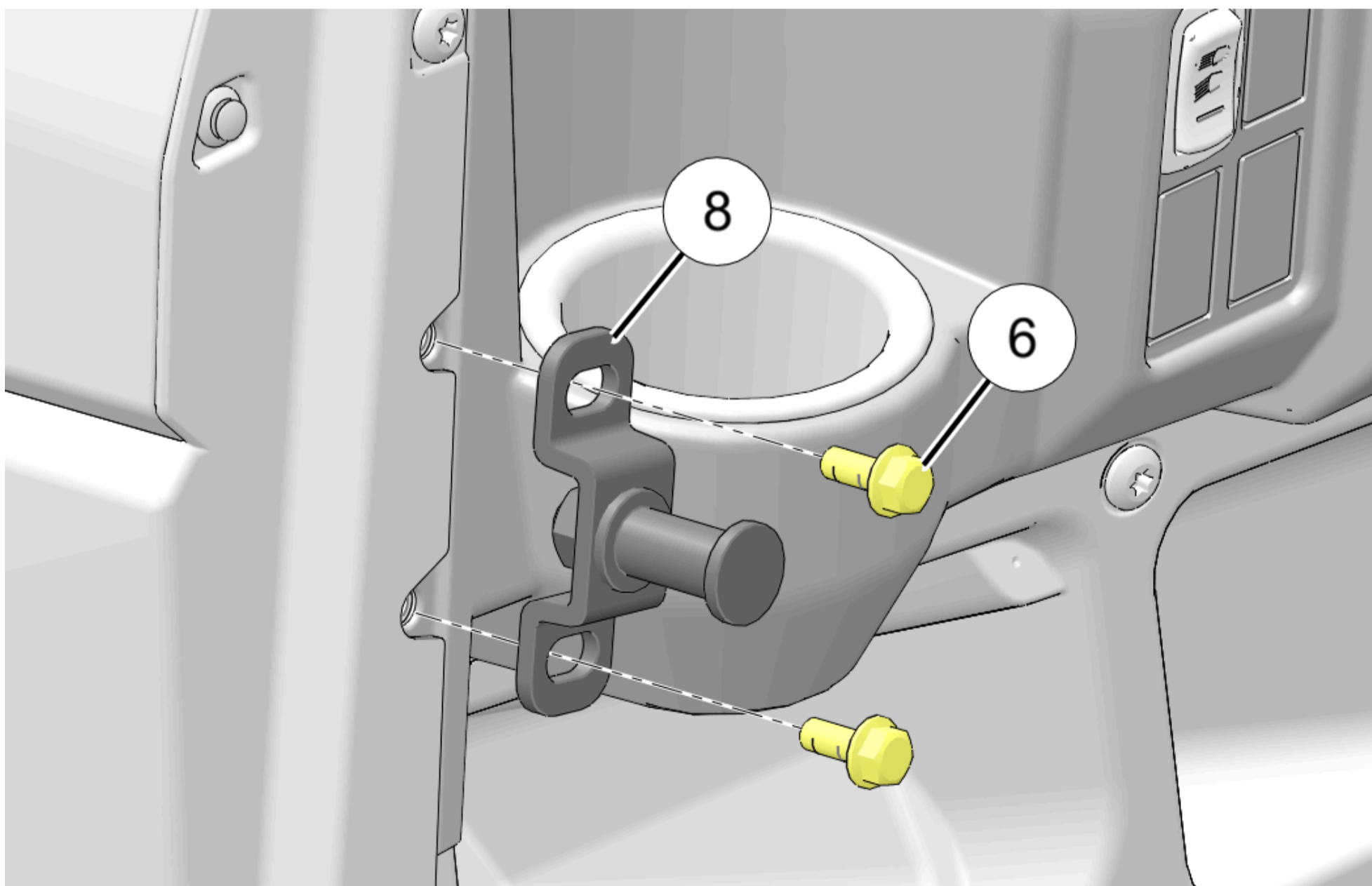
15. Assemble striker pin (5) to striker bracket (8) using nut (7).

Tighten nut.



16. Install striker bracket (8) to chassis structure using two screws (8). Center striker over screw holes in chassis, then partially tighten screws.

DO NOT torque fasteners at this time.



17. Open interior door latch (13) (to ensure proper position of pawl), then slowly close door and observe engagement of striker pin (5) into door latch.

Adjust location of striker pin bracket to achieve the following:

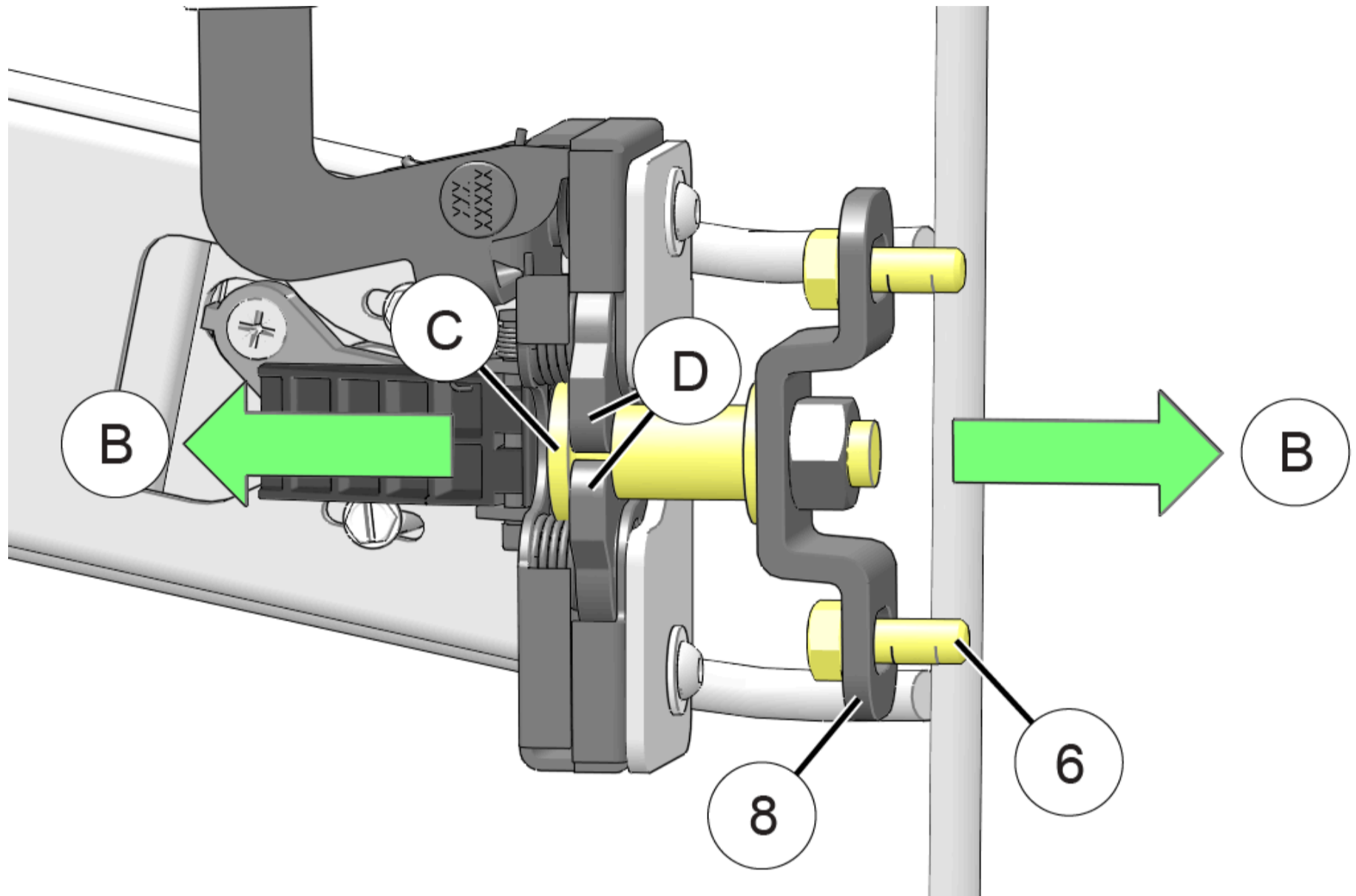
NOTICE

Striker shown detached from chassis structure for clarity.

1. **EXTENSION (B)**: Head of pin (C) should fully clear latch pawls (D) as shown. To extend pin rearward, remove two screws (6) and striker bracket (8), place shim (9) between bracket and chassis structure, then reinstall bracket and screws.

NOTICE

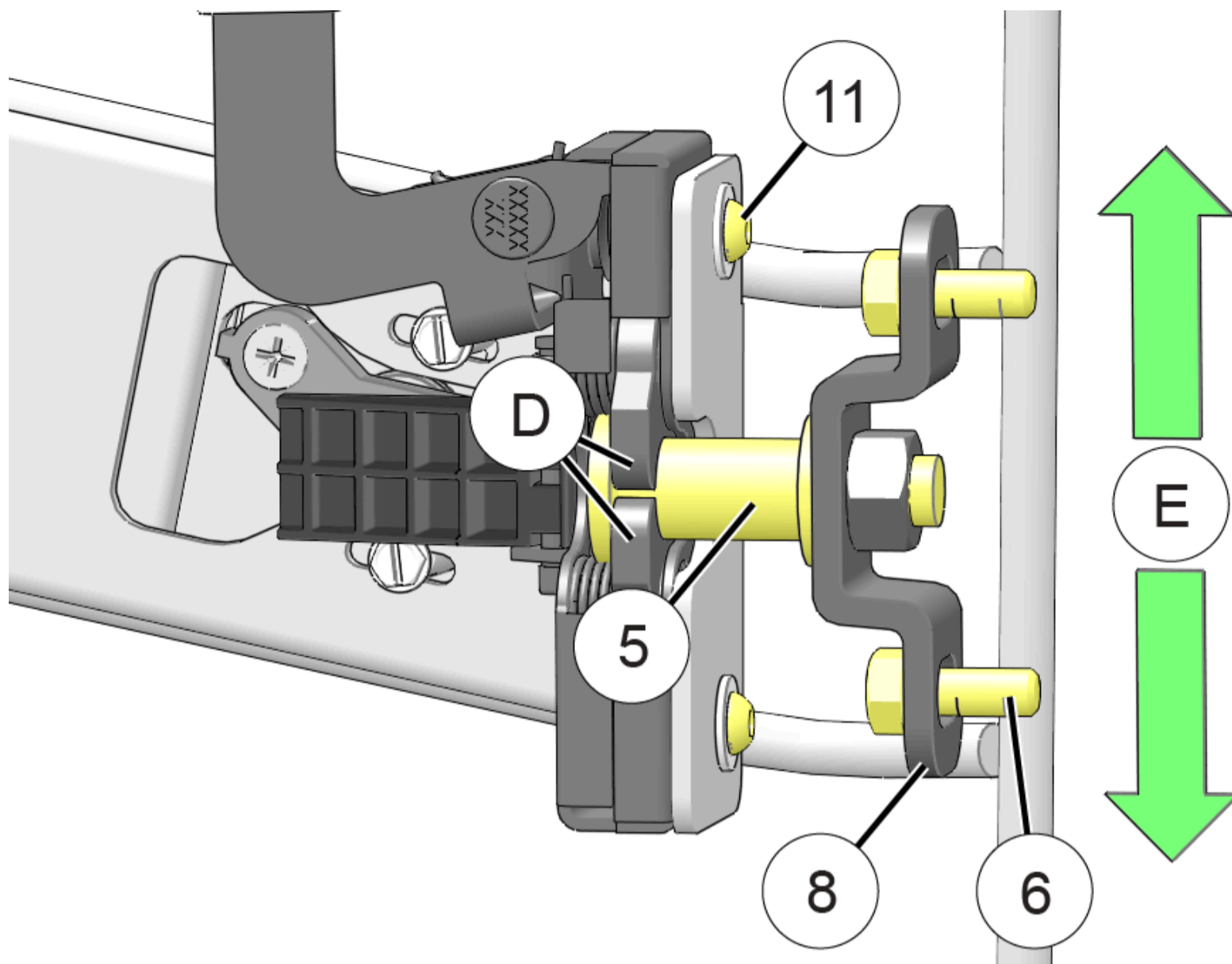
If head of pin extends **too far rearward**, even without shim, then entire door must be moved rearward by adjusting door side hinges. See Steps 3–4.



2. **HEIGHT (E)**: Pin (5) should be centered vertically in opening of latch pawls (D). To adjust, loosen two screws (6), slide striker bracket (8) up or down as required, then retighten screws.

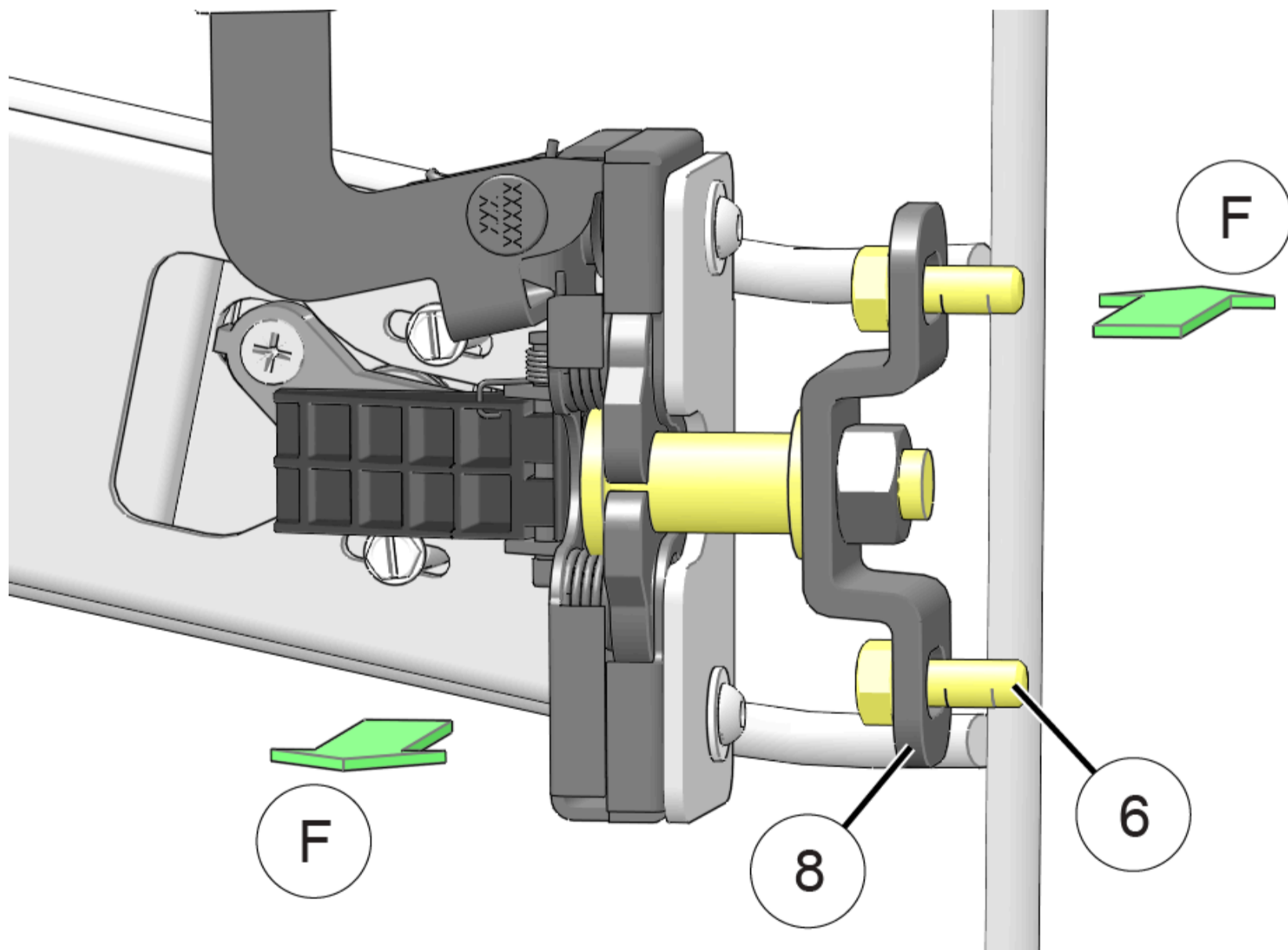
NOTICE

If further adjustment range is needed, loosen two screws (11), slide interior door latch (13) up or down as required, then retighten screws.



3. **DEPTH (F)**: As required to achieve desired fairing between door frame (1) and ROPS/chassis door structure. To adjust, loosen two screws (6), slide striker bracket (8) inboard or outboard as required, then retighten screws.

Ensure depth adjustment is made with latch pawls (D) at FULL closure as shown below (second "click"), not at partial closure (first "click").



18. Ensure proper operation of interior latch (13) and exterior latch (15). Adjust as required, then tighten all latch screws. See Steps 13-14.

19. Torque striker screws (6) to specification.

TORQUE

Striker Screws (6):

17 ft-lbs (23 N·m)

20. Repeat Steps 3–19 for right door frame ② using right hinges ⑳㉓㉗㉙, and right interior door latch ㉔.

21. Lower vehicle bed.

[Site Map](#)

[Privacy Policy](#)

[Accessibility](#)

© 2025 Polaris Inc.